



# **SELF STUDY REPORT**

**FOR**

**1<sup>st</sup> CYCLE OF ACCREDITATION**

**GOVERNMENT COLLEGE OF ENGINEERING, SALEM**

**GOVERNMENT COLLEGE OF ENGINEERING, SALEM NH7, BANGALORE  
HIGHWAYS**

**636011**

**[www.gcesalem.edu.in](http://www.gcesalem.edu.in)**

**Submitted To**

**NATIONAL ASSESSMENT AND ACCREDITATION COUNCIL**

**BANGALORE**

**February 2018**

# 1. EXECUTIVE SUMMARY

---

## 1.1 INTRODUCTION

Government College of Engineering, Salem was started during the 3rd Five Year Plan in 1966 and is located in a beautiful 231 acres site surrounded by hills. The first batch of students was selected for the academic year 1966 - 67 for courses in Civil, Mechanical and Electrical Engineering. In the year 1973 - 74, the Metallurgical Engineering branch was started. Electronics and Communication Engineering branch was introduced in the year 1985 - 86. Computer Science and Engineering course was introduced in the year 2001. Apart from six Under Graduate courses, the Institute offers five Post Graduate courses namely Computer Aided Design, Structural Engineering, Power Electronics and Drives, Thermal Engineering and Welding Technology.

Autonomous Status has been conferred to the institution by Anna University, Chennai and the University Grants Commission (UGC). The Under-graduate B.E. courses Metallurgical Engineering, Electronics and Communications Engineering and Post-graduate M.E. courses Computer Aided Design, Structural Engineering and Thermal Engineering are accredited by the National Board of Accreditation (NBA). Choice Based Credit System (CBCS) has been implemented from the academic year 2016-2017.

All the Departments have been granted recognition for guiding research work leading to Ph.D. under the Anna University, Chennai. GCE Salem is one of the eleven Technical Institutions in Tamilnadu selected for World Bank financial assistance under Technical Education Quality Improvement Programme (TEQIP).

The AICTE has recognized the Institute as one of the Quality Improvement Programme (QIP) centers for doing research leading to Ph.D. in Mechanical, Civil and Electrical Engineering branches.

### Vision

We envision our students as excellent engineers not only in the field of Science and Technology, but also in good citizenship and discipline. Our commitment lies in producing comprehensive knowledge seekers and humane individuals, capable of building a strong and developed nation.

### Mission

- To impart updated technical education and knowledge.
- To groom our young students to become professionally and morally sound engineers.
- To reach global standards in production and value based living through honest and scientific approach

## 1.2 Strength, Weakness, Opportunity and Challenges(SWOC)

### Institutional Strength

- Well qualified, dedicated and experienced faculty members.
- Infrastructural, Laboratory and Research facilities.
- State government funded Institution.
- World bank financial assistance through TEQIP.
- Autonomous status.
- 12 (B) and 2 (f) Status.
- Meritorious students.
- Well equipped labs and digitally enabled classrooms for conducive learning environment.
- Motivation and support to students in co-curricular and extra-curricular activities.
- Good placement in reputed organizations.
- Periodic research interventions like conferences, symposium and workshops on varied topics of interest.

### **Institutional Weakness**

- Improvement in e-governance.
- Full utilization of resources.
- Sponsored research grants from various funding organizations.
- Industry Institute collaborative research and consultancy.
- Tie-up with premier Institutions in India and Abroad.
- Filing of patents.

### **Institutional Opportunity**

- Curriculum to enhance Graduate attributes (GA's).
- Choice Based Credit System.
- Blooms Taxonomy.
- Faculty contribution in Research and Consultancy.
- Tapping research grants.
- MoU with premier Institutions, Research Laboratories and Industries
- Entrepreneur development.
- Centre of Excellence in all Departments.

### **Institutional Challenge**

- Balancing administrative, academic and research work.
- Continuous changes in technology.
- Students with diverse background.
- To forge strong alliances with National and Global organizations.
- To provide 100% placement to the students.
- To enhance students to enter into higher studies in Abroad / Administrative positions in India.
- To shape the rural students according to the requirement of IT industries.

## **1.3 CRITERIA WISE SUMMARY**

## Curricular Aspects

Government College of Engineering, Salem has been conferred Autonomous Status by Anna University, Chennai as well as UGC since 2009. Hence, the Institution has the flexibility in designing the curriculum and syllabi for various disciplines in accordance with the local/national/global developmental needs. The curriculum and syllabi are revised after every four years, based on the feedback received from the various stakeholders like Employers, Alumni, Students, Faculty Members, Academic Experts, Industrialists, etc. Recently, the Curriculum and Syllabi are revised for 2016 Regulations from the academic year 2016-2017. The Choice Based Credit System (CBCS) is introduced in the 2016 Regulations to encourage the students to take courses of their interest from other disciplines. The Communication Skills Laboratory, In-plant training and Project Work are made mandatory in the Curriculum to enhance the employability skills of the students. To make the students aware of their social responsibilities, courses like Environmental Science and Engineering, Professional Ethics, Disaster Management, Waste Utilization and Recycling, etc are included in the Curriculum. The final year students of the Institute are encouraged to undertake internships and field projects by making suitable provisions in their academic schedule during eighth semester. The Board of Studies of each discipline will meet regularly to take timely corrective and improvement actions in the Curriculum and Syllabi.

## Teaching-learning and Evaluation

Student admission to the Institute is carried out under Unified Single Window Admission system by Anna University, Chennai. Meritorious students are getting admitted through single window admission system. Admission process follows the 69% Rule of Reservation of Government of Tamilnadu. Other state students are admitted as per the norms of Government of Tamilnadu.

Presently, the full time teachers are recruited through Teachers Recruitment Board (TRB), Tamilnadu. Well-qualified and talented full time teachers are involved in the teaching process. All the teachers use ICT tools to make the students understand the concepts easily and make them more attentive to the lectures. Interactive teaching techniques like group discussions, quizzes, debates, tutorial classes, practical demonstrations, industrial visits, etc. are organized to enhance the learning experiences of the students. Their technical skills and knowledge are updated by exposing them into various in-house training programs, conferences, workshops, seminars, symposiums etc.

Outcome Based Education (OBE) is in practice in all the disciplines. The Program Outcomes, Program Educational Objectives and Course Outcomes are well defined for all disciplines based on the inputs from various stakeholders and disseminated to the students. The office of the Controller of Examinations (CoE) is taking responsibility of performance evaluation of the students by partly involving external experts in the question paper setting and evaluation process. Examination Management System (EMS) is implemented for student registration, hall ticket issue and result processing. The Regulations adopted are continuously assessed and revised to provide enhancement in the Teaching-Learning process.

## Research, Innovations and Extension

All the Departments in the Institute are recognized as research center by Anna University, Chennai. There are 24 faculty members in the Institute recognized as Research Guides. The Institution has been awarded World Bank financial assistance under Technical Education Quality Improvement Programme (TEQIP) for strengthening Institution to produce high quality engineers.

The Institute has taken various measures to promote research activities in the Institute. The faculty members and students are provided financial assistance under TEQIP to attend conferences, seminars, symposium, workshops, training programs, etc. Research works of the faculty members are published in peer-reviewed journals in good numbers. The faculty members were provided fiscal incentives for their paper publications. The full time research scholars and master degree students are provided with monthly stipend to motivate them to participate in research activities. The TEQIP fund has been effectively utilized to procure state of the art equipments in all the departments to buildup the research facilities in the Institute.

The Institution has various associations/clubs like National Cadet Corps (NCC), National Service Scheme (NSS), Youth Red Cross (YRC), Red Ribbon Club (RRC), Leo Club, Rotract Club, etc. The students of these clubs and staff have participated in various programs like, blood donation camp, medical checkup camp, dengue awareness rally, aids awareness campaign, blood grouping camp, mini marathon, orphanage and old age home visits, etc. organized in association with other governmental and non-governmental organizations. The Institute has signed Memorandum of Understanding (MOU) with JSW Steel Ltd., Salem Works and Frontline Electronics, Salem.

### **Infrastructure and Learning Resources**

The Institute has excellent infrastructure with a built-up area of 26,764 sq.m. Central and Digital library complexes are spread over the area of 1,732 sq.m to serve the students and faculty members of the Institute. The Central library has 66139 volumes of books. The library subscribes for 111 numbers of Magazines and Indian Journals, 261 numbers of foreign journals, 970 ebooks, audio and video resources. The KOHA library management software has been installed in the library. The remote access to the e-resources of the library has been provided to the students and faculty members through REMOTEXs server. Separate buildings are available for all the Engineering Departments. A total number of 37 class rooms and 59 well equipped laboratories are available in the Institute. Each Department has well furnished seminar hall and department library. The Institute has a huge playground with facilities of 8 lane 400 m track, cricket ground, hockey ground, foot ball field, volley ball court, ball badminton court, hand ball court, basket ball court with flood lights, kabaddi court, kho-kho court, badminton court, table tennis, chess and carom boards and gymnasium. The Institute receives block grant amount of approximately Rs. 4.0 crores every year from State Government. The Institute is provided with National Knowledge Network facility during 2013, which offers 100 Mbps connectivity and 15 VPN connectivity with 2 Mbps access speed. Inside the campus, the facilities like, canteen, bank extension counter, the planetarium, post office and health centre are available.

### **Student Support and Progression**

The Institute supports the majority of its students by providing scholarships through various government scheme and non-government schemes like, community (BC/MBC/DNC/SC/ST/SCC) scholarships, Chief Minister's award, Merit-cum-Means scholarship, Ministry of Steel scholarship, National Handicapped Finance and Development Corporation scholarship, JSW scholarship, Alumni scholarship, SRM Alumni scholarship, etc. The Institute organizes various short term training programs, soft skill development program, career counseling and bridge courses regularly to enhance the skills and knowledge of the student.

Training and Placement cell of the college provides training to enhance the personality and employability of the students. The students are getting placed in reputed companies. The student chapters of various national professional bodies facilitate the students to sharpen their professional skills. The students are

qualifying in state, national and international level examinations like TANCET, GATE, GRE, TOFEL, TNPSC, TRB, etc. and getting admitted in premier institutes and government organizations. The Literary and Cultural Association of the Institute encourages the students to take part in cultural events conducted at other institutes and the students have won prizes in various competitions. The intra-collegiate annual sports meet, annual cultural festival (GECOFEST), and alumni meet are organized to encourage the students to actively participate in extra-curricular activities. The Alumni Association of the Institute significantly contributes to the development of the Institute. The Alumni Association has built an alumni center at a cost of about one crore in the Institute with a seminar hall, a conference hall and an interview hall to facilitate the training and placement activities.

### **Governance, Leadership and Management**

The Institution belongs to the Government of Tamilnadu and is under the administrative control of the Commissioner of Technical Education, Chennai. The Board of Governors looks after the overall governance of the college and aims to meet the vision of the institution. Since an academic freedom is given to the college, various leadership positions are framed with required powers which helps to ensure the excellence in governance. The statutory sub committees like Academic Committee, Finance Committee, Building and Works Committee, Purchase Committee, Disciplinary Committee, Institutional Development Committee, Students Affairs Committee, Library Committee, Grievance Redressal Committee, Anti Gender Harassment Committee and Faculty and Staff Development Committee are constituted for enhancing the effective governance of the Institute. The senior faculty members act as the convener of these sub committees and frequently conduct the committee meetings to actively involve the various members of these committees to take part in the Governance activities. It permits faculty to enact freely in formulation of development objectives, directives for certain plans with prescribed guidelines.

### **Institutional Values and Best Practices**

The Anti-Gender Harassment Committee of the Institute frequently meets to address the Gender related issues in the Institute and ensure that there will not be any gender related issues in the Institute. Women's day is celebrated every year in the Institute to showcase their importance in the Institute and to encourage them to take part in various activities. The institute has initiated the Green Campus Drive by planting more than 8500 saplings in the campus. The rain-water harvesting structures are constructed in all the buildings to save rainwater to increase the ground water levels.

The Institute is slowly transforming to use renewable energy resources and energy efficient LED and CFL lamps in the Institute campus. The Institute has installed 30 solar street lights in the campus to change towards using renewable energy resources. Solar water heater is used in the women's hostel. More than 70 LED street lights are installed in the campus.

## 2. PROFILE

### 2.1 BASIC INFORMATION

Name and Address of the College	
Name	GOVERNMENT COLLEGE OF ENGINEERING, SALEM
Address	Government College of Engineering, Salem NH7, Bangalore Highways
City	Salem
State	Tamil Nadu
Pin	636011
Website	<a href="http://www.gcesalem.edu.in">www.gcesalem.edu.in</a>

Contacts for Communication					
Designation	Name	Telephone with STD Code	Mobile	Fax	Email
Principal(in-charge)	C. Vasanthan ayaki	0427-2346157	9487564005	0427-2346158	principal@gcesalem.edu.in
IQAC / CIQA coordinator	A.m. Kalpana	-	9944826102	-	kalpana.gce@gmail.com

Status of the Institution	
Institution Status	Government

Type of Institution	
By Gender	Co-education
By Shift	Regular

Recognized Minority institution	
If it is a recognized minority institution	No

Establishment Details	
Date of Establishment, Prior to the Grant of	01-06-1966

'Autonomy'	
Date of grant of 'Autonomy' to the College by UGC	03-01-2012

**University to which the college is affiliated**

State	University name	Document
Tamil Nadu	Anna University	<a href="#">View Document</a>

**Details of UGC recognition**

Under Section	Date	View Document
2f of UGC	30-01-2012	<a href="#">View Document</a>
12B of UGC	03-08-2015	<a href="#">View Document</a>

**Details of recognition/approval by stationary/regulatory bodies like AICTE,NCTE,MCI,DCI,PCI,RCI etc(other than UGC)**

Statutory Regulatory Authority	Recognition/Approval details Institution/Department programme	Day,Month and year(dd-mm-yyyy)	Validity in months	Remarks
AICTE	<a href="#">View Document</a>	30-04-2017	12	

**Recognitions**

Is the College recognized by UGC as a College with Potential for Excellence(CPE)?	No
Is the College recognized for its performance by any other governmental agency?	No

**Location and Area of Campus**

Campus Type	Address	Location*	Campus Area in Acres	Built up Area in sq.mts.
Main campus area	Government College of Engineering, Salem NH7, Bangalore Highways	Rural	231.46	26764



## 2.2 ACADEMIC INFORMATION

Details of Programmes Offered by the College (Give Data for Current Academic year)						
Programme Level	Name of Programme/Course	Duration in Months	Entry Qualification	Medium of Instruction	Sanctioned Strength	No.of Students Admitted
UG	BE,Civil Engineering	48	HSC	English	120	99
UG	BE,Mechanical Engineering	48	HSC	English	120	100
UG	BE,Electrical And Electronics Engineering	48	HSC	English	60	47
UG	BE,Metallurgical Engineering	48	HSC	English	60	53
UG	BE,Electronics And Communication Engineering	48	HSC	English	60	43
UG	BE,Computer Science And Engineering	48	HSC	English	60	53
PG	ME,Civil Engineering	24	BE OR BTECH	English	18	18
PG	ME,Mechanical Engineering	24	BE OR BTECH	English	18	11
PG	ME,Mechanical Engineering	24	BE OR BTECH	English	18	15
PG	ME,Electrical And Electronics Engineering	24	BE OR BTECH	English	18	16
PG	ME,Metallurgical Engineering	24	BE OR	English	18	15

	gical Engineering		BTECH			
Doctoral (Ph.D)	PhD or DPhil,Civil Engineering	36	ME OR MTECH	English	26	3
Doctoral (Ph.D)	PhD or DPhil,Mechanical Engineering	36	ME OR MTECH	English	41	4
Doctoral (Ph.D)	PhD or DPhil,Electrical And Electronics Engineering	36	ME OR MTECH	English	41	0
Doctoral (Ph.D)	PhD or DPhil,Electronics And Communication Engineering	36	ME OR MTECH	English	10	0
Doctoral (Ph.D)	PhD or DPhil,Science And Humanities	36	M.Phil.	English	16	0

### Position Details of Faculty & Staff in the College

Teaching Faculty												
	Professor				Associate Professor				Assistant Professor			
	Male	Female	Others	Total	Male	Female	Others	Total	Male	Female	Others	Total
Sanctioned by the UGC /University State Government	13				23				81			
Recruited	2	1	0	3	5	5	0	10	30	35	0	65
Yet to Recruit	10				13				16			
Sanctioned by the Management/Society or Other Authorized Bodies	0				0				0			
Recruited	0	0	0	0	0	0	0	0	0	0	0	0
Yet to Recruit	0				0				0			

Non-Teaching Staff				
	Male	Female	Others	Total
Sanctioned by the UGC /University State Government				80
Recruited	44	17	0	61
Yet to Recruit				19
Sanctioned by the Management/Society or Other Authorized Bodies				0
Recruited	0	0	0	0
Yet to Recruit				0

Technical Staff				
	Male	Female	Others	Total
Sanctioned by the UGC /University State Government				0
Recruited	0	0	0	0
Yet to Recruit				0
Sanctioned by the Management/Society or Other Authorized Bodies				0
Recruited	0	0	0	0
Yet to Recruit				0

### Qualification Details of the Teaching Staff

Permanent Teachers										
Highest Qualification	Professor			Associate Professor			Assistant Professor			
	Male	Female	Others	Male	Female	Others	Male	Female	Others	Total
D.sc/D.Litt/LLD	0	0	0	0	0	0	0	0	0	0
Ph.D.	2	1	0	1	3	0	15	12	0	34
M.Phil.	0	0	0	1	0	0	5	1	0	7
PG	0	0	0	2	2	0	10	22	0	36

Temporary Teachers										
Highest Qualification	Professor			Associate Professor			Assistant Professor			
	Male	Female	Others	Male	Female	Others	Male	Female	Others	Total
D.sc/D.Litt/LLD	0	0	0	0	0	0	0	0	0	0
Ph.D.	0	0	0	0	0	0	0	0	0	0
M.Phil.	0	0	0	0	0	0	0	0	0	0
PG	0	0	0	0	0	0	0	0	0	0

Part Time Teachers										
Highest Qualification	Professor			Associate Professor			Assistant Professor			
	Male	Female	Others	Male	Female	Others	Male	Female	Others	Total
D.sc/D.Litt/LLD	0	0	0	0	0	0	0	0	0	0
Ph.D.	0	0	0	0	0	0	0	1	0	1
M.Phil.	0	0	0	0	0	0	3	3	0	6
PG	0	0	0	0	0	0	27	9	0	36

Details of Visting/Guest Faculties				
Number of Visiting/Guest Faculty engaged with the college?	Male	Female	Others	Total
	0	0	0	0

**Provide the Following Details of Students Enrolled in the College During the Current Academic Year**

Programme		From the State Where College is Located	From Other States of India	NRI Students	Foreign Students	Total
UG	Male	261	7	0	0	268
	Female	153	1	0	0	154
	Others	0	0	0	0	0
PG	Male	54	0	0	0	54
	Female	21	0	0	0	21
	Others	0	0	0	0	0
Doctoral (Ph.D)	Male	6	1	0	0	7
	Female	0	0	0	0	0
	Others	0	0	0	0	0

Provide the Following Details of Students admitted to the College During the last four Academic Years					
Programme		Year 1	Year 2	Year 3	Year 4
SC	Male	49	59	53	55
	Female	29	30	26	30
	Others	0	0	0	0
ST	Male	3	2	3	4
	Female	1	0	2	1
	Others	0	0	0	0
OBC	Male	250	242	249	262
	Female	142	121	138	131
	Others	0	0	0	0
General	Male	6	8	5	13
	Female	1	4	2	7
	Others	0	0	0	0
Others	Male	7	14	5	10
	Female	1	5	1	4
	Others	0	0	0	0
Total		489	485	484	517

## 2.3 EVALUATIVE REPORT OF THE DEPARTMENTS

Department Name	Upload Report
Civil Engineering	<a href="#">View Document</a>
Computer Science And Engineering	<a href="#">View Document</a>
Electrical And Electronics Engineering	<a href="#">View Document</a>
Electronics And Communication Engineering	<a href="#">View Document</a>
Mechanical Engineering	<a href="#">View Document</a>
Metallurgical Engineering	<a href="#">View Document</a>
Science And Humanities	<a href="#">View Document</a>

## Extended Profile

---

### 1 Program

#### 1.1

Number of programs offered year-wise for last five years

2016-17	2015-16	2014-15	2013-14	2012-13
16	16	16	NA	NA

#### 1.2

Number of all programs offered by the institution during the last five years

Response: 16

#### 1.3

How many self-financed Programs does the institution offer

Response: 0

#### 1.4

Number of new programmes introduced during the last five years, if any

Response: 0

#### 1.5

Number of UG programmes offered by the College, which are not covered under the Autonomous status of UGC

Response: 0

#### 1.6

Number of PG programmes offered by the College, which are not covered under Autonomous status of UGC

Response: 0

#### 1.7

Whether the College is offering professional programme

**Response: Yes**

## 2 Students

### 2.1

**Number of students year-wise during the last five years**

2016-17	2015-16	2014-15	2013-14	2012-13
2130	2120	2199	NA	NA

### 2.2

**Number of outgoing / final year students year-wise during the last five years**

2016-17	2015-16	2014-15	2013-14	2012-13
594	626	627	NA	NA

### 2.3

**Total number of outgoing / final year students**

**Response: 594**

### 2.4

**Number of students appeared in the examination conducted by the Institution, year-wise during the last five years**

2016-17	2015-16	2014-15	2013-14	2012-13
2103	2106	2183	NA	NA

### 2.5

**Number of revaluation applications year-wise during the last 5 years**

2016-17	2015-16	2014-15	2013-14	2012-13
1753	1410	1737	NA	NA

## 3 Teachers

### 3.1



**Number of courses in all programs year-wise during the last five years**

2016-17	2015-16	2014-15	2013-14	2012-13
470	462	462	NA	NA

**3.2****Number of courses offered by the institution across all programs during the last five years****Response: 2318****3.3****Number of full time teachers year-wise during the last five years**

2016-17	2015-16	2014-15	2013-14	2012-13
73	79	78	NA	NA

**3.4****Number of full time teachers worked in the institution during the last 5 years****Response: 360****3.5****Number of teachers recognized as guides during the last five years****Response: 24****3.6****Number of sanctioned posts year-wise during the last five years**

2016-17	2015-16	2014-15	2013-14	2012-13
119	119	119	NA	NA

**3.7****Total number of publications during the last 5 years, which are included in online databases such as SCOPUS, web of science or PubMed/ Indian Citation Index****Response: 219**

## 4 Institution

### 4.1

**Number of eligible applications received for admissions to all the programs year-wise during the last five years**

2016-17	2015-16	2014-15	2013-14	2012-13
485	484	519	NA	NA

### 4.2

**Number of seats earmarked for reserved category as per GOI/State Govt rule year-wise during the last five years**

2016-17	2015-16	2014-15	2013-14	2012-13
393	393	393	NA	NA

### 4.3

**Total number of classrooms and seminar halls**

**Response: 43**

### 4.4

**Total number of computers in the campus for academic purpose**

**Response: 555**

### 4.5

**Total Expenditure excluding salary year-wise during the last five years ( INR in Lakhs)**

2016-17	2015-16	2014-15	2013-14	2012-13
258.73	279.05	304.58	NA	NA

### 4.6

**Annual lighting power requirement (in KWH)**

**Response: 19920**

### 4.7

**Annual power requirement of the institution (in KWH)**

**Response: 736096**

NAAC

## 4. Quality Indicator Framework(QIF)

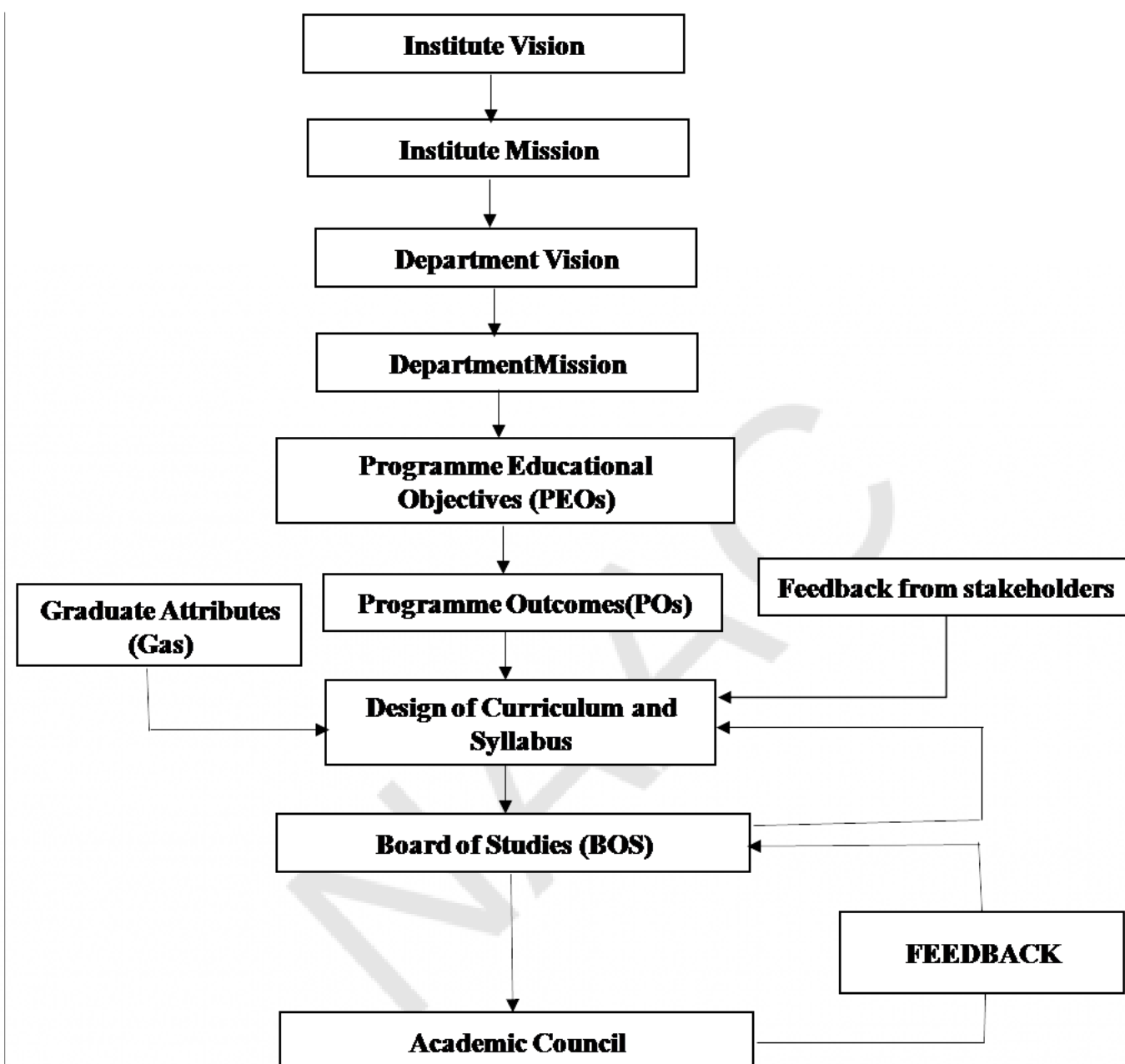
### Criterion 1 - Curricular Aspects

#### 1.1 Curriculum Design and Development

**1.1.1 Curricula developed /adopted have relevance to the local/ national / regional/global developmental needs with learning objectives including program outcomes, program specific outcomes and course outcomes of all the program offered by the Institution**

**Response:**

Design and development of curriculum and syllabus is carried out in all the programs, in alignment with the Institute and Departmental Vision, Mission, Program Educational Objectives (PEOs), Program Specific Outcomes (PSOs) and Program Outcomes (POs). The PSOs, POs and course outcomes (COs) are designed in relevance to the needs of the society for regional and national developmental requirements. Feedbacks are obtained from the stakeholders like students, alumni, industry experts, employers, parents, faculty members. Meetings are convened by the Head of the Department along with faculty experts to frame the syllabi for the courses in the relevant modules based on the feedbacks received from stakeholders. The prepared curriculum and syllabus is presented to the members of Board of Studies (BOS). The BOS of each Department is composed of internal faculty members, university nominee, subject experts from other academic institutes, industry expert, alumni and student members. After detailed discussions by the BOS members (internal and external), Alumni and Industrial Experts during the BOS meeting, the obtained feedback is used for revisions in the curriculum and syllabus, followed by the scrutiny of the Standing Committee. Subsequently the Board of Studies approves the curriculum and syllabus and the same is presented to the Academic Council for its consideration and final approval with or without modification. The curriculum is framed with a judicious mix of basic sciences, humanities and professional core courses. Starting from basic sciences, moving to engineering fundamentals and reaching the advance courses is the framework of the curriculum. The curriculum comprises of many advance courses as electives, state of art subjects and based on the demand of industry. The educational tours to the core-industries and practical internship training in the Industry form an essential component of the curriculum.



### 1.1.2 Percentage of programs where syllabus revision was carried out during the last five years

**Response:** 100

1.1.2.1 How many programs were revised out of total number of programs offered during the last five years

**Response:** 11

File Description	Document
Minutes of relevant Academic Council/BOS meeting	<a href="#">View Document</a>
Details of program syllabus revision in last 5 years	<a href="#">View Document</a>

### 1.1.3 Average percentage of courses having focus on Employability/ Entrepreneurship/ Skill development during the last five years

**Response: 7.85**

1.1.3.1 Number of courses having focus on employability/ entrepreneurship/ skill development year-wise during the last five years

2016-17	2015-16	2014-15	2013-14	2012-13
42	35	35	NA	NA

File Description	Document
Program/ Curriculum/ Syllabus of the courses	<a href="#">View Document</a>
Minutes of the Boards of Studies/ Academic Council meetings with approvals for these courses	<a href="#">View Document</a>
Average percentage of courses having focus on employability/ entrepreneurship	<a href="#">View Document</a>

## 1.2 Academic Flexibility

**1.2.1 Percentage of new Courses introduced out of the total number of courses across all Programs offered during last five years**

**Response: 3.15**

1.2.1.1 How many new courses are introduced within the last five years

Response: 73

File Description	Document
Institutional data in prescribed format	<a href="#">View Document</a>

**1.2.2 Percentage of programs in which Choice Based Credit System (CBCS)/Elective course system has been implemented**

**Response:** 68.75

1.2.2.1 Number of programmes in which CBCS/ Elective course system implemented.

Response: 11

File Description	Document
Minutes of relevant Academic Council/BOS meetings	<a href="#">View Document</a>
Institutional data in prescribed format	<a href="#">View Document</a>

### 1.3 Curriculum Enrichment

#### 1.3.1 Institution integrates cross cutting issues relevant to Gender, Environment and Sustainability, Human Values and Professional Ethics into the Curriculum

**Response:**

The Institution integrates cross cutting issues relevant to Environment and Sustainability, Human values and Professional Ethics into the Curriculum. The Board of Studies of various disciplines meets frequently to incorporate the courses relevant to industrial and social needs, based on the feedbacks from the various stakeholders of this Institute. The Environmental Science and Engineering course has been included in the Curriculum of all branches to make the students conversant with the environmental issues and ethics, environmental resources, environmental threats and pollution, solid waste management and preservation of ecosystem and biodiversity. The community services have been added as non-credit mandatory course in the Curriculum. The following courses are included in Curriculum of various disciplines to impart the cross cutting issues relevant to Environment sustainability, Human values and Professional Ethics.

- Professional Ethics and Human Values
- Ground Water Engineering
- Environmental Impact Assessment
- Municipal Solid Waste Management
- Air Pollution Management
- Industrial Waste Management
- Irrigation, Water management and Drainage Engineering
- Constructional personnel Management
- Hazardous Waste Management
- Air Pollution Monitoring and Control
- Marine Pollution Monitoring and Control
- Environmental Management
- Disaster Mitigation and Management
- Renewable Energy Sources
- Metallurgical Waste Utilization and Management

File Description	Document
Upload the list and description of the courses which address the Gender, Environment and Sustainability, Human Values and Professional Ethics into the Curriculum	<a href="#">View Document</a>

### 1.3.2 Number of value-added courses imparting transferable and life skills offered during the last five years

**Response: 0**

1.3.2.1 Number of value-added courses are added within the last five years

File Description	Document
List of value added courses	<a href="#">View Document</a>

### 1.3.3 Average percentage of students enrolled in the courses under 1.3.2 above

**Response: 0**

1.3.3.1 Number of students enrolled in value-added courses imparting transferable and life skills offered year-wise during the last five years

2016-17	2015-16	2014-15	2013-14	2012-13
0	0	0	NA	NA

File Description	Document
List of students enrolled	<a href="#">View Document</a>

### 1.3.4 Percentage of students undertaking field projects / internships

**Response: 3.15**

1.3.4.1 Number of students undertaking field projects or internships

Response: 67

File Description	Document
List of programs and number of students undertaking field projects / internships	<a href="#">View Document</a>



## 1.4 Feedback System

**1.4.1 Structured feedback received from 1) Students, 2) Teachers, 3) Employers, 4) Alumni 5) Parents for design and review of syllabus Semester wise /year-wise**

**Response:** A. Any 4 of above

File Description	Document
Any additional information	<a href="#">View Document</a>

**1.4.2 Feedback processes of the institution may be classified as follows:**

**Response:** B. Feedback collected, analysed and action has been taken

File Description	Document
Any additional information	<a href="#">View Document</a>

## Criterion 2 - Teaching-learning and Evaluation

### 2.1 Student Enrollment and Profile

#### 2.1.1 Average percentage of students from other States and Countries during the last five years

**Response:** 0.65

##### 2.1.1.1 Number of students from other states and countries year-wise during the last five years

2016-17	2015-16	2014-15	2013-14	2012-13
19	9	16	NA	NA

File Description	Document
List of students (other states and countries)	<a href="#">View Document</a>
Institutional data in prescribed format	<a href="#">View Document</a>

#### 2.1.2 Demand Ratio(Average of last five years)

**Response:** 101:114

##### 2.1.2.1 Number of seats available year-wise during the last five years

2016-17	2015-16	2014-15	2013-14	2012-13
570	570	570	NA	NA

File Description	Document
Demand Ratio (Average of Last five years)	<a href="#">View Document</a>

#### 2.1.3 Average percentage of seats filled against seats reserved for various categories as per applicable reservation policy during the last five years

**Response:** 95.42

##### 2.1.3.1 Number of actual students admitted from the reserved categories year-wise during the last five years

2016-17	2015-16	2014-15	2013-14	2012-13
376	369	375	NA	NA

File Description	Document
Average percentage of seats filled against seats reserved	<a href="#">View Document</a>

## 2.2 Catering to Student Diversity

### 2.2.1 The institution assesses the learning levels of the students, after admission and organises special programs for advanced learners and slow learners

#### Response:

Learning Level of students is monitored regularly by internal assessment tests, and tutorial sessions; first semester output gives clear picture on students' performance. Three internal assessment tests are conducted before the end semester examinations. After each internal assessment tests, the results are analyzed and the slow learners are identified. The class committee meeting is convened after each internal assessment tests to address the academic issues of the students. Separate counseling is given to slow learners by class advisor and Head of the Department. Additional classes and re-tests are conducted for slow learners. Apart from the class advisor, the senior students (advanced learners) are appointed as mentor for small group of slow learners in the lower semesters. The student mentors help the slow learners in the Department and as well as hostel premises.

Advanced learners are encouraged to do mini-project in their subject domain. The experts are invited from Academia, R&D organizations and industries to deliver lecture to the students on recent developments and industrial requirements in all disciplines. It gives opportunity to the advanced learners to enrich their subject knowledge with recent advancements and current researches in their domain.

Special classes in Mathematics are being conducted in Bridge Course for the lateral entry students admitted directly during the second year. It enables the diploma candidates to update themselves with the mathematical concepts which they missed in Higher Secondary Level.

From this academic year, an one week induction programme is organized for the first semester students to motivate them to excel in their studies and to identify their inner skills.

Office of the Controller of Examinations (CoE) of the Institute has initiated the steps to reduce the gap between last date of the examinations and announcement of results. CoE office is taking necessary actions to publish the results within 15 days from the commencement of next semester classes, so that slow learners can be identified and mentored to achieve better performance.

### 2.2.2 Student - Full time teacher ratio

**Response:** 351:20

File Description	Document
Institutional data in prescribed format	<a href="#">View Document</a>

### 2.2.3 Percentage of differently abled students (Divyangjan) on rolls

**Response:** 0.28

#### 2.2.3.1 Number of differently abled students on rolls

Response: 6

File Description	Document
Institutional data in prescribed format	<a href="#">View Document</a>

## 2.3 Teaching- Learning Process

### 2.3.1 Student centric methods, such as experiential learning, participative learning and problem solving methodologies are used for enhancing learning experiences

**Response:**

#### Experimental learning

The experimental learning involves engaging students in activities that enable them to experience course content. The curriculum is designed such that the theory and the corresponding laboratory courses are present in the same semester to enable the students to experimentally learn the concepts what they are studying the theory course in lab class. The students carry out lot of experiments in their laboratory courses and mini project works. The Institute encourages the students to have experimental learning by conducting hands on experience workshops on the state of the art equipments procured in all departments. The students undergo industrial visits, in-plant training, internships at industries and R&D organizations, which will help them to visualize the concepts, learned in their classrooms.

#### Participative learning

Participative learning encourages students to restructure their own knowledge and understanding of concepts, which helps students to recognize gaps in their understanding, it promote effective problem solving strategies. The department makes use of participative learning methods like, group discussion where the students express their knowledge within the group and have healthy competition, Industrial/Field visit- the department organizes guest lectures and arrange industrial visits for students to develop their interactive, collaborative and independent learning. For necessary topics, interactive lectures with industry experts are initiated in the department. Classroom debates and seminars are also made within the department for the students.

#### Problem solving methodologies

The problem solving methodology learning focuses on providing students with opportunities to identify

and tackle complex, multifaced problems in both small groups and on their own. Problem based learning was implemented in the tutorial classes by the subject faculty. The Institute also encourages getting MOU with the industries for better training in problem solving in core fields and bridging the gap between academics and the industry. The objective of detecting, identifying, assessing the problems and ways to explore the possible solution by the analytical, intellectual and investigative approach to the student which are thoroughly facilitated by the faculty.

### 2.3.2 Percentage of teachers using ICT for effective teaching with Learning Management Systems (LMS), E-learning resources etc.

**Response:** 61.02

#### 2.3.2.1 Number of teachers using ICT

Response: 72

File Description	Document
List of teachers (using ICT for teaching)	<a href="#">View Document</a>

### 2.3.3 Ratio of students to mentor for academic and stress related issues

**Response:** 27.66

#### 2.3.3.1 Number of mentors

Response: 77

File Description	Document
Year wise list of number of students, full time teachers and mentor/mentee ratio	<a href="#">View Document</a>

### 2.3.4 Preparation and adherence to Academic Calendar and Teaching plans by the institution

**Response:**

The Institute gives more importance in preparation of Academic Calendar to balance between academic activities, non-academic activities, teaching and examination schedule. The academic calendar is prepared well in advance before the commencement of the classes and circulated to all departments and displayed in notice boards. The academic schedule planned such a way that the students can undergo three-four week in-plant training, internships, field projects, etc during their vacation period. The Internal Assessment Test dates, last working day and end semester examination start date are fixed in the academic schedule and Institute strictly adheres to the academic schedule. Hence, the students can prepare well for the Internal Assessment Tests and End Semester Examinations. All the faculty members prepare their lesson plan before the commencement of classes and get approval from their Head of the Department. The number of hours in the teaching plan is framed depending on the credits of the course and made available to the

students. According to the lesson plan and implementation details are placed in the course file of the subject. This guides the faculty members to stick to the academic schedules as much as possible. The chief faculty advisors of all Departments ensure that the Internal Assessment Tests and Project Reviews are conducted on scheduled date and time. And also, they ensure that all the faculty members complete the syllabus before the last working day of the semester.

Sample Academic Schedule for the 2017-2018 odd semester

NAAC



**OFFICE OF THE CONTROLLER OF EXAMINATIONS**  
**GOVERNMENT COLLEGE OF ENGINEERING, SALEM :: 636011**  
 (An Autonomous Institution Affiliated to Anna University, Chennai)

**Academic Schedule For June 2017 – November 2017 Odd Semester Session**  
**Full Time and Part Time – UG & PG Programmes**

Sl.No	Programmes	Semester	Commencement of Classes	Internal Assessment Test/Project Review			Last Working Day	Date of Commencement of End Semester Examinations	Reopening Day (Tentative)
				I	II	III			
1	B.E Full Time	III	22.06.2017	31.07.2017 to 02.08.2017	04.09.2017 to 06.09.2017	09.10.2017 to 11.10.2017	27.10.2017	2 <sup>nd</sup> week of November 2017	3 <sup>rd</sup> week of December 2017
		V							
		VII							
2	B.E Part Time	III	22.06.2017	31.07.2017 to 04.08.2017	04.09.2017 to 08.09.2017	09.10.2017 to 13.10.2017	27.10.2017		
		V							
		VII							
3	M.E Full Time	III	22.06.2017	31.07.2017 to 02.08.2017	04.09.2017 to 06.09.2017	09.10.2017 to 11.10.2017	27.10.2017		
	M.E Part Time	III & V							

**NOTE:**

1.	HODs are requested not to schedule any departmental functions, symposiums, industrial visit etc... on the above internal assessment test dates.
2.	<b>Test Timings</b> : For V,VII Semester - Fore Noon 9.30 am to 11.00 am; After Noon 1.30 pm to 3.00 pm : For III Semester - Fore Noon 11.15 am to 12.45 am; After Noon 3.15 pm to 4.45 pm
3.	<b>Class Committee</b> : First Meeting within one week after reopening, Second & Third meeting after one week of internal Assessment Test evaluation

To  
HODs :

CIVIL *[Signature]*  
 EEE *[Signature]*  
 CSE *[Signature]*  
 25/05/17

ECE *[Signature]*  
 MATHEMATICS *[Signature]*  
 MECHANICAL *[Signature]*  
 25/5

METALLURGICAL *[Signature]*  
 PHYSICS *[Signature]*  
 ENGLISH *[Signature]*  
 25/5/17

CHEMISTRY *[Signature]*  
 25/5/17

*[Signature]*  
 PRINCIPAL & CHAIRMAN

**PRINCIPAL**  
**GOVT. COLLEGE OF ENGG.**  
**SALEM-636 011.**



## 2.4 Teacher Profile and Quality

### 2.4.1 Average percentage of full time teachers against sanctioned posts during the last five years

**Response:** 60.5

File Description	Document
Year wise full time teachers and sanctioned posts for 5 years	<a href="#">View Document</a>

### 2.4.2 Average percentage of full time teachers with Ph.D. during the last five years

**Response:** 33.75

#### 2.4.2.1 Number of full time teachers with Ph.D. year-wise during the last five years

2016-17	2015-16	2014-15	2013-14	2012-13
31	27	25	NA	NA

File Description	Document
List of number of full time teachers with PhD and number of full time teachers for 5 years	<a href="#">View Document</a>

### 2.4.3 Teaching experience per full time teacher in number of years

**Response:** 9.68

#### 2.4.3.1 Total experience of full-time teachers

**Response:** 1142.25

File Description	Document
List of Teachers including their PAN, designation,dept and experience details	<a href="#">View Document</a>

### 2.4.4 Percentage of full time teachers who received awards, recognition, fellowships at State, National, International level from Government, recognised bodies during the last five years

**Response:** 0

#### 2.4.4.1 Number of full time teachers receiving awards from state /national /international level from Government recognised bodies year-wise during the last five years



2016-17	2015-16	2014-15	2013-14	2012-13
0	0	0	NA	NA

File Description	Document
Institutional data in prescribed format	<a href="#">View Document</a>

#### 2.4.5 Average percentage of full time teachers from other States against sanctioned posts during the last five years

**Response:** 0

##### 2.4.5.1 Number of full time teachers from other states year-wise during the last five years

2016-17	2015-16	2014-15	2013-14	2012-13
0	0	0	NA	NA

File Description	Document
List of full time teachers from other state and state from which qualifying degree was obtained	<a href="#">View Document</a>

## 2.5 Evaluation Process and Reforms

#### 2.5.1 Average number of days from the date of last semester-end/ year- end examination till the declaration of results during the last five years

**Response:** 51.4

##### 2.5.1.1 Number of days from the date of last semester-end/ year- end examination till the declaration of results year-wise during the last five years

2016-17	2015-16	2014-15	2013-14	2012-13
54	48	50	NA	NA

File Description	Document
List of programs and date of last semester and date of declaration of result	<a href="#">View Document</a>

### 2.5.2 Average percentage of student complaints/grievances about evaluation against total number appeared in the examinations during the last five years

**Response:** 0

#### 2.5.2.1 Number of complaints/grievances about evaluation year-wise during the last five years

2016-17	2015-16	2014-15	2013-14	2012-13
0	0	0	NA	NA

File Description	Document
Number of complaints and total number of students appeared year wise	<a href="#">View Document</a>

### 2.5.3 Average percentage of applications for revaluation leading to change in marks during the last five years

**Response:** 19.36

#### 2.5.3.1 Number of applications for revaluation leading to change in marks year-wise during the last five years

2016-17	2015-16	2014-15	2013-14	2012-13
395	274	300	NA	NA

File Description	Document
Year wise number of applications, students and revaluation cases	<a href="#">View Document</a>

### 2.5.4 Positive impact of reforms on the examination procedures and processes including IT integration and continuous internal assessment on the examination management system

**Response:**

## Examination Procedures:

Reforms	Impacts
Three sets of question papers are prepared for end-semester examination by external and internal experts	Reduced the chances of question paper leakage Confidentiality in question paper selection
Scrutinizing of all question papers by external and internal experts	Reduced number of mistakes Uniform distribution of questions to all the chapters Typographical errors are avoided
Valuation of end semester examination answer scripts by external and internal experts	Involvement of external members makes the valuation more transparent and unbiased
Implementation of Examination Management System	Students are able to register and pay fees through online Hall ticket issue become easier Result processing and tabulations made easier

**2.5.5 Status of automation of Examination division along with approved Examination Manual**

**Response:** B. Only student registration, Hall ticket issue & Result Processing

File Description	Document
Current manual of examination automation system and Annual reports of examination including the present status of automation	<a href="#">View Document</a>

**2.6 Student Performance and Learning Outcomes**

**2.6.1 Program outcomes, program specific outcomes and course outcomes for all programs offered by the Institution are stated and displayed on website and communicated to teachers and students**

**Response:**

The Program outcomes and course outcomes are designed to achieve the vision of the Institute and each department. The Program Outcome of the various programs offered by the Institute are aligned to the Graduate Attributes prescribed by NBA. The Program Outcomes and Program Educational Objectives are published and disseminated in the HOD's chamber, website, department notice boards, classrooms and department premises. Apart from the display, the Program Outcomes and Program Educational Objectives are disseminated to the students and faculty members through orientation program and meetings held in the

department level. The Course Outcomes are prepared by the Course Coordinators and approved by the corresponding Board of Studies. The faculty members are provided training on outcome based education and students are made aware of the learning outcomes during the beginning of every course through the respective course coordinators.

File Description	Document
Link for Additional Information	<a href="#">View Document</a>

## 2.6.2 Attainment of program outcomes, program specific outcomes and course outcomes are evaluated by the institution

### Response:

The following tools are used by the Departments to assess the Attainment of Program Outcomes and Course Outcomes.

### Direct Assessment Tools:

Continuous Internal Assessment Test	Three internal assessment tests are conducted during the semester for all the theory courses to assess the student's knowledge and understanding on the course.
End-Semester examination	The end semester examinations are held for all courses at the end of the semester to evaluate the student's knowledge in the respective course.
Assignment	Assignments are given to the students for all the courses to evaluate their ability to apply the knowledge gained in that course.
Project Review	Three reviews are conducted for final year projects during the semester to monitor the progress in their project works.
Project viva-voce	Viva-voce is conducted for each final year project team at the end of the semester.

### Indirect Assessment Tools:

Placement Statistics	The recruiters will evaluate the student's fundamental knowledge, analytical and communication skills. The placement statistics will give the indirect assessment of the student's quality.
Higher study details	It shows the attitude of the students' towards life-long learning.
Course end survey	A survey questionnaire is given to the students at

	the end of the each course to assess the attainment of course outcome.
Graduate exit survey	A survey is taken at the end of the programme to get the feedback from the graduate about their level of attainment in each of the programme outcomes.

### 2.6.3 Average pass percentage of Students

**Response:** 92.24

2.6.3.1 Total number of final year students who passed the examination conducted by Institution.

Response: 547

2.6.3.2 Total number of final year students who appeared for the examination conducted by the institution

Response: 593

File Description	Document
List of programs and number of students passed and appeared in the final year examination	<a href="#">View Document</a>

## 2.7 Student Satisfaction Survey

2.7.1 Online student satisfaction survey regarding teaching learning process

**Response:** 2.76

File Description	Document
Database of all currently enrolled students	<a href="#">View Document</a>

## Criterion 3 - Research, Innovations and Extension

### 3.1 Promotion of Research and Facilities

**3.1.1 The institution has a well defined policy for promotion of research and the same is uploaded on the institutional website**

**Response:** No

**3.1.2 The institution provides seed money to its teachers for research (average per year)**

**Response:** 0

3.1.2.1 The amount of seed money provided by institution to its faculty year-wise during the last five years(INR in Lakhs)

2016-17	2015-16	2014-15	2013-14	2012-13
0	0	0	NA	NA

#### File Description

#### Document

List of teachers receiving grant and details of grant received

[View Document](#)

**3.1.3 Number of teachers awarded international fellowship for advanced studies/ research during the last five years**

**Response:** 0

3.1.3.1 The number of teachers awarded international fellowship for advanced studies / research year-wise during the last five years

2016-17	2015-16	2014-15	2013-14	2012-13
0	0	0	NA	NA

#### File Description

#### Document

List of teachers and their international fellowship details

[View Document](#)

**3.1.4 Institution has the following facilities**

**1. Central Instrumentation Centre**

2. Animal House/Green House / Museum
3. Central Fabrication facility
4. Media laboratory/Business Lab/Studios
5. Research / Statistical Databases

**Response:** E. None of the facilities exist

### 3.2 Resource Mobilization for Research

**3.2.1 Grants for research projects sponsored by the non-government sources such as industry, corporate houses, international bodies, endowments, Chairs in the institution during the last five years (INR in Lakhs)**

**Response:** 21.74

3.2.1.1 Total Grants for research projects sponsored by the non-government sources such as industry, corporate houses, international bodies, endowments, Chairs in the institution year-wise during the last five years (INR in Lakhs)

2016-17	2015-16	2014-15	2013-14	2012-13
2.74	0	0	NA	NA

File Description	Document
List of project and grant details	<a href="#">View Document</a>

**3.2.2 Number of research centres recognised by University and National/ International Bodies**

**Response:** 5

3.2.2.1 Number of research centres recognised by University and National/ International Bodies

Response: 5

File Description	Document
Names of research centres	<a href="#">View Document</a>

**3.2.3 Percentage of teachers recognised as research guides**

**Response:** 20.34

3.2.3.1 Number of teachers recognised as research guides

Response: 24

File Description	Document
Details of teachers recognized as research guide	<a href="#">View Document</a>

### 3.2.4 Number of research projects per teacher funded, by government and non-government agencies, during the last five year

**Response:** 0.01

3.2.4.1 Number of research projects funded by government and non-government agencies during the last five years

Response: 02

File Description	Document
List of research projects and funding details	<a href="#">View Document</a>

## 3.3 Innovation Ecosystem

### 3.3.1 Institution has created an eco system for innovations including Incubation centre and other initiatives for creation and transfer of knowledge

**Response:**

The Institute encourages its faculty members and students to take up innovative research activities using existing facilities. TEQIP funding has been utilized to procure state of the art research facilities in the Institute. The Institute organizes workshops for students on entrepreneurship.

- Workshop titled “To enhance employability and entrepreneurship skills for third and final year students” was organized by Institute on 27.11.2014.
- Shri K. Govindarajan, General Manager, District Industries Centre, Salem has motivated the Metallurgical Engineering students to become Entrepreneur by giving a lecture on “Entrepreneurship Schemes by Government of India” on 25.03.2015.

The entrepreneurship development course has been added as elective course in the UG curriculum.

The Institute has recently established Start-up cell to encourage the students to become entrepreneurs.

### 3.3.2 Number of workshops/seminars conducted on Intellectual Property Rights (IPR) and Industry - Academia Innovative practices during the last five years

**Response:** 0

3.3.2.1 Number of workshops/seminars conducted on Intellectual Property Rights (IPR) and Industry-Academia Innovative practices year-wise during the last five years



2016-17	2015-16	2014-15	2013-14	2012-13
0	0	0	NA	NA

File Description	Document
List of workshops/seminars during the last 5 years	<a href="#">View Document</a>

### 3.3.3 Number of awards for innovation won by institution/ teachers/ research scholars/students during the last five years

**Response:** 0

3.3.3.1 Total number of awards for innovation won by institution/teachers/research scholars/students year-wise during the last five years

2016-17	2015-16	2014-15	2013-14	2012-13
0	0	0	NA	NA

File Description	Document
List of innovation and award details	<a href="#">View Document</a>

### 3.3.4 Number of start-ups incubated on campus during the last five years

**Response:** 0

3.3.4.1 Total number of start-ups incubated on campus year-wise during the last five years

2016-17	2015-16	2014-15	2013-14	2012-13
0	0	0	NA	NA

File Description	Document
List of startups details like name of startup, nature, year of commencement etc	<a href="#">View Document</a>

## 3.4 Research Publications and Awards

**3.4.1 The institution has a stated Code of Ethics to check malpractices and plagiarism in Research****Response:** Yes

File Description	Document
Institutional data in prescribed format	<a href="#">View Document</a>

**3.4.2 The institution provides incentives to teachers who receive state, national and international recognition/awards****Response:** No

File Description	Document
List of Awardees and Award details	<a href="#">View Document</a>

**3.4.3 Number of Patents published/awarded during the last five years****Response:** 1**3.4.3.1 Total number of Patents published/awarded year-wise during the last five years**

2016-17	2015-16	2014-15	2013-14	2012-13
1	0	0	NA	NA

File Description	Document
List of patents and year it was awarded	<a href="#">View Document</a>

**3.4.4 Number of Ph.D.s awarded per teacher during the last five years****Response:** 1.33**3.4.4.1 How many Ph.Ds are registered within last 5 years****Response:** 32

File Description	Document
List of PhD scholars and their details like name of the guide , title of thesis, year of award etc	<a href="#">View Document</a>

**3.4.5 Number of research papers per teacher in the Journals notified on UGC website during the last five years**

**Response: 1.99****3.4.5.1 Number of research papers in the Journals notified on UGC website during the last five years**

2016-17	2015-16	2014-15	2013-14	2012-13
20	35	32	NA	NA

File Description	Document
List of research papers by title, author, department, name and year of publication	<a href="#">View Document</a>

**3.4.6 Number of books and chapters in edited volumes / books published, and papers in national/international conference-proceedings per teacher during the last five years****Response: 0.47****3.4.6.1 Total number of books and chapters in edited volumes / books published, and papers in national/international conference-proceedings year-wise during the last five years**

2016-17	2015-16	2014-15	2013-14	2012-13
38	43	38	NA	NA

File Description	Document
List books and chapters in edited volumes / books published	<a href="#">View Document</a>

**3.4.7 Bibliometrics of the publications during the last five years based on average citation index in Scopus/ Web of Science or PubMed****Response: 2.4****3.4.7.1 Total number of citations received by publications in the last 5 years, which are included in online databases such as SCOPUS, web of science or PubMed/ Indian Citation Index**

Response: 3988

File Description	Document
BiblioMetrics of the publications during the last five years	<a href="#">View Document</a>

**3.4.8 Bibliometrics of the publications during the last five years based on Scopus/ Web of Science - h-index of the Institution****Response:** 9

3.4.8.1 Number of citations received by individual research publications in the last 5 years

**Response:** 29

3.4.8.2 Number of publications receiving proportionately maximum number of citation in the last five years

**Response:** 33

File Description	Document
Bibliometrics of publications based on Scopus/ Web of Science - h-index of the Institution	<a href="#">View Document</a>

**3.5 Consultancy****3.5.1 Institution has a policy on consultancy including revenue sharing between the institution and the individual****Response:** Yes

File Description	Document
Soft copy of the Consultancy Policy	<a href="#">View Document</a>

**3.5.2 Revenue generated from consultancy during the last five years****Response:** 174.88

3.5.2.1 Total amount generated from consultancy year-wise during the last five years (INR in Lakhs)

2016-17	2015-16	2014-15	2013-14	2012-13
46.753	57.68	18.584	NA	NA

File Description	Document
List of consultants and revenue generated by them	<a href="#">View Document</a>

**3.5.3 Revenue generated from corporate training by the institution during the last five years**

**Response: 0**

3.5.3.1 Total amount generated from corporate training by the institution year-wise during the last five years (INR in Lakhs)

2016-17	2015-16	2014-15	2013-14	2012-13
0	0	0	NA	NA

File Description	Document
List of teacher consultants and revenue generated by them	<a href="#">View Document</a>

### 3.6 Extension Activities

**3.6.1 Extension activities in the neighbourhood community in terms of impact and sensitising students to social issues and holistic development during the last five years**

**Response:**

There are four NSS units in Government College of Engineering, Salem. Each NSS unit has adopted a village in the nearby surroundings of the college. There are two types of activities done by each NSS unit, Regular and special Camp activities. The NSS unit students are grouped into five committees like cleaning committee, disciplinary committee, maintenance committee, pollution free committee and water committee. Each unit is guided by a programme officer and consists of 100 volunteers. Under regular activities programmes like tree plantation, cleaning bushes in the adopted villages and conducting awareness programmes on health, environmental hazards, etc. The camp activities include the conduct of programmes in the adopted villages like painting of school walls and compound walls, awareness programmes on prohibition of alcohol and smoking, child labour, road accidents and right to vote. The activities include conduct of blood donation camp, dengue awareness campaign, eye camp, veterinary camp and competitions for the school children. Apart from NSS units, YRC, Leo Club, and Rotract club also present in the Institute. The members of this clubs organizes blood donation camps, medical checkups, visit to orphanages and old age homes, etc.

**3.6.2 Number of awards and recognition received for extension activities from Government /recognised bodies during the last five years**

**Response: 1**

3.6.2.1 Total number of awards and recognition received for extension activities from Government /recognised bodies year-wise during the last five years

2016-17	2015-16	2014-15	2013-14	2012-13
0	1	0	NA	NA

File Description	Document
Number of awards for extension activities in last 5 years	<a href="#">View Document</a>
e-copy of the award letters	<a href="#">View Document</a>

### 3.6.3 Number of extension and outreach Programs conducted in collaboration with Industry, Community and Non- Government Organizations through NSS/ NCC/ Red Cross/ YRC etc., during the last five years

**Response: 13**

3.6.3.1 Number of extension and outreach Programs conducted in collaboration with Industry, Community and Non- Government Organizations through NSS/ NCC/ Red Cross/ YRC etc., year-wise during the last five years

2016-17	2015-16	2014-15	2013-14	2012-13
3	3	2	NA	NA

File Description	Document
Number of extension and outreach programs conducted with industry,community etc for the last five years	<a href="#">View Document</a>

### 3.6.4 Average percentage of students participating in extension activities with Government Organisations, Non-Government Organisations and programs such as Swachh Bharat, Aids Awareness, Gender Issue, etc. during the last five years

**Response: 21.79**

3.6.4.1 Total number of students participating in extension activities with Government Organisations, Non-Government Organisations and programs such as Swachh Bharat, Aids Awareness, Gender Issue, etc. year-wise during the last five years

2016-17	2015-16	2014-15	2013-14	2012-13
626	1216	160	NA	NA

File Description	Document
Average percentage of students participating in extension activities with Govt. or NGO etc.	<a href="#">View Document</a>

### 3.7 Collaboration

#### 3.7.1 Number of Collaborative activities for research, faculty exchange, student exchange per year

**Response:** 0

3.7.1.1 Total number of Collaborative activities for research, faculty exchange, student exchange year-wise during the last five years

2016-17	2015-16	2014-15	2013-14	2012-13
0	0	0	NA	NA

File Description	Document
Number of Collaborative activities for research, faculty etc.	<a href="#">View Document</a>

#### 3.7.2 Number of linkages with institutions/industries for internship, on-the-job training, project work, sharing of research facilities etc. during the last five years

**Response:** 40

3.7.2.1 Number of linkages for faculty exchange, student exchange, internship, field trip, on-the-job training, research, etc year-wise during the last five years

2016-17	2015-16	2014-15	2013-14	2012-13
4	5	7	NA	NA

File Description	Document
Details of linkages with institutions/industries for internship	<a href="#">View Document</a>

#### 3.7.3 Number of functional MoUs with institutions of National/ International importance, Other

**Institutions, Industries, Corporate houses etc., during the last five years (only functional MoUs with ongoing activities to be considered)**

**Response: 9**

3.7.3.1 Number of functional MoUs with institutions of national, international importance, other universities, industries, corporate houses etc. year-wise during the last five years (only functional MoUs with ongoing activities to be considered)

2016-17	2015-16	2014-15	2013-14	2012-13
0	1	0	NA	NA

File Description	Document
Details of functional MoUs with institutions of national, international importance, other universities etc. during the last five years	<a href="#">View Document</a>



## Criterion 4 - Infrastructure and Learning Resources

### 4.1 Physical Facilities

#### 4.1.1 The institution has adequate facilities for teaching - learning. viz., classrooms, laboratories, computing equipment, etc

##### Response:

The institution has adequate facilities for teaching - learning. The institute has 37 class rooms and fully furnished 6 seminar halls. All the faculty members uses ICT Tools like LCD Projector, computers, online courses, videos, tutorials, etc for teaching purpose. The Institute has 54 well equipped laboratories to serve the students of this Institute. The Institute has been selected as one of the 33 regional centres in India to collaborate with IIT, Mumbai and ISTE to offer courses and training through video conferencing. Regular classes are also offered to students under Quality Enhancement in Engineering Education (QEEE) and Anna University – EDUSAT programs. The Institute has a library located in a separate block containing books pertaining to the various courses of study in this institution as well as a limited number of books of general value and interest. The library has 66139 volumes of books. The library subscribes for 111 numbers of Magazines and Indian Journals, 261 numbers of foreign journals, 970 ebooks, audio and video resources. The College has a Digital Library to access e-journals, e-books and NPTEL video lectures with a capacity of one hundred. A Video conferencing hall is also been established with a seating capacity of 161. Every department has its own library, well stocked with reference books and text books, readily accessible to students and staff of their respective departments. Each department has their on computer laboratory for students to enable them to work on simulation softwares related to their course of study.

#### 4.1.2 The institution has adequate facilities for sports, games (indoor, outdoor), gymnasium, yoga centre etc., and cultural activities

##### Response:

The Institute has a huge playground with excellent sports kits, equipments and supporting staffs. The following sports and games facilities are available in the Institute. The Institute has 16 station multi gymnasium to ensure the fitness of the interested faculty members and students.

S.No.	Description of games	No. Available
1	400mts Standard Track	8 lane
2	Cricket Ground	1
3	Hockey ground	1
4	Foot Ball field	2
5	Volley ball court	2
6	Ball Badminton Court	2

7	Hand Ball Court	1
8	Kabaddi Court	1
9	Kho- Kho Court	1
10	Basket Ball with flood light court	1
11	Badminton Court	2
12	Chess	10
13	Table Tennis	4 boards
14	Carrom Board	6 boards

The Institute has an Padmashree Muthaiyan Auditorium to showcase the talents of the students.

#### 4.1.3 Percentage of classrooms and seminar halls with ICT - enabled facilities such as smart class, LMS, etc

**Response:** 67.44

##### 4.1.3.1 Number of classrooms and seminar halls with ICT facilities

Response: 29

File Description	Document
Number of classrooms and seminar halls with ICT enabled facilities	<a href="#">View Document</a>

#### 4.1.4 Average percentage of budget allocation, excluding salary for infrastructure augmentation during the last five years.

**Response:** 51.08

##### 4.1.4.1 Budget allocation for infrastructure augmentation, excluding salary year-wise during the last five years (INR in Lakhs)

2016-17	2015-16	2014-15	2013-14	2012-13
140.3	137.43	96.59	NA	NA

File Description	Document
Details of budget allocation, excluding salary during the last five years	<a href="#">View Document</a>

## 4.2 Library as a Learning Resource

### 4.2.1 Library is automated using Integrated Library Management System (ILMS)

#### Response:

The Institute library is partially automated with Koha Library Management Software

- Name of the ILMS software: **KOHA LIBRARY MANAGEMENT SOFTWARE**
- Nature of automation (fully or partially): **PARTIALLY**
- Version: **3.16.00.000**
- Year of automation: **2014**

Apart from the Koha Library Management Software, the Library also has library security system: e-GATE and remote access to the e-resources of the library through REMOTEXs subscription.

### 4.2.2 Collection of rare books, manuscripts, special reports or any other knowledge resource for library enrichment

#### Response:

The number of books and journals available in the library is given below.

S.No.	Details	Number available	
1	Total Number of Volumes	66139	
2	Total number of Titles	30120	
3	Book Bank Books (SC/ST)	2074	
4	Number of Magazines and Indian Journals	111	
5	Number of Foreign Journals (56print + 205 online Journals)	261	
6	Number of Newspapers	09	

### 4.2.3 Does the institution have the following

#### 1.e-journals

- 2.e-ShodhSindhu
- 3.Shodhganga Membership
- 4.e-books
- 5.Databases

**Response:** Any 3 of the above

File Description	Document
Details of subscriptions like e-journals,e-ShodhSindhu,Shodhganga Membership etc.	<a href="#">View Document</a>

#### 4.2.4 Average annual expenditure for purchase of books and journals during the last five years (INR in Lakhs)

**Response:** 19.99

4.2.4.1 Annual expenditure for purchase of books and journals year-wise during the last five years (INR in Lakhs)

2016-17	2015-16	2014-15	2013-14	2012-13
0.087	41.4223	32.7684	NA	NA

File Description	Document
Details of annual expenditure for purchase of books and journals during the last five years	<a href="#">View Document</a>

#### 4.2.5 Availability of remote access to e-resources of the library

**Response:** Yes

File Description	Document
Details of remote access to e-resources of the library	<a href="#">View Document</a>

#### 4.2.6 Percentage per day usage of library by teachers and students

**Response:** 7.54

4.2.6.1 Number of teachers and students using library per day over last one year

**Response:** 165

File Description	Document
Details of library usage by teachers and students	<a href="#">View Document</a>

### 4.3 IT Infrastructure

#### 4.3.1 Institution frequently updates its IT facilities including Wi-Fi

**Response:**

In the 28th November, 2006, Campus Wide Area Networking project has been completed with OFC connectivity between departments. In 2013 the Institute is provided with NKN [National Knowledge Network]. This facility offers 100 mbps connectivity and 15 VPN connectivity with 2 Mbps access speed. Campus wide wi-fi networking has been established including both the boys and girls hostels. In 2016 the bandwidth is increased to 1Gbps and Wifi access points were provided at 48 vantage points with access speed of minimum 10Mbps per user.

#### 4.3.2 Student - Computer ratio

**Response:** 153:41

File Description	Document
Student - Computer ratio	<a href="#">View Document</a>

#### 4.3.3 Available bandwidth of internet connection in the Institution (Lease line )

**Response:** 750 MBPS

File Description	Document
Details of available bandwidth of internet connection in the Institution	<a href="#">View Document</a>

#### 4.3.4 Facilities for e-content development such as Media Centre, Recording facility, Lecture Capturing System (LCS)

**Response:** No

File Description	Document
Facilities for e-content development such as Media Centre, Recording facility,LCS	<a href="#">View Document</a>

### 4.4 Maintenance of Campus Infrastructure

**4.4.1 Average Expenditure incurred on maintenance of physical facilities and academic support facilities excluding salary component, as a percentage during the last five years****Response:** 1.26

4.4.1.1 Expenditure incurred on maintenance of physical facilities and academic support facilities excluding salary component year-wise during the last five years (INR in Lakhs)

2016-17	2015-16	2014-15	2013-14	2012-13
4.46	2.84	2.54	NA	NA

**File Description****Document**

Details about assigned budget and expenditure on physical facilities and academic facilities

[View Document](#)**4.4.2 There are established systems and procedures for maintaining and utilizing physical, academic and support facilities - laboratory, library, sports complex, computers, classrooms etc.****Response:**

The laboratories, class rooms, seminar halls, sport complex, equipments, computers and other ICT Tools, etc of the Institute are open to all the students and faculty members of the Institute. A simple requisition letter needs to be submitted through proper channel to the Head of the Department of the facility requested. All the requests will be accepted and students will be permitted to utilize the facilities at other Departments. The users from other organizations has to submit request letter to the Head of the Institution for using the facility within the Institute. The Head of the Institution will provide permission by considering the internal utilization of the facilities.

## Criterion 5 - Student Support and Progression

### 5.1 Student Support

#### 5.1.1 Average percentage of students benefited by scholarships and freeships provided by the Government during the last five years

**Response:** 59.5

5.1.1.1 Number of students benefited by scholarships and freeships provided by the Government year-wise during the last five years

2016-17	2015-16	2014-15	2013-14	2012-13
1432	1272	1279	NA	NA

#### File Description

Average percentage of students benefited by scholarships and freeships provided by the Government during the last five years

#### Document

[View Document](#)

#### 5.1.2 Average percentage of students benefited by scholarships, freeships, etc. provided by the institution besides government schemes during the last five years

**Response:** 0.37

5.1.2.1 Total number of students benefited by scholarships, freeships, etc provided by the institution besides government schemes year-wise during the last five years

2016-17	2015-16	2014-15	2013-14	2012-13
8	8	8	NA	NA

#### File Description

Number of students benefited by scholarships and freeships besides government schemes in last 5 years

#### Document

[View Document](#)

#### 5.1.3 Number of capability enhancement and development schemes –

- 1.Guidance for competitive examinations
- 2.Career Counselling

- 3. Soft skill development
- 4. Remedial coaching
- 5. Language lab
- 6. Bridge courses
- 7. Yoga and Meditation
- 8. Personal Counselling

**Response:** 7 or more of the above

File Description	Document
Details of capability enhancement and development schemes	<a href="#">View Document</a>
Any additional information	<a href="#">View Document</a>

#### 5.1.4 Average percentage of students benefited by guidance for competitive examinations and career counselling offered by the institution during the last five years

**Response:** 8.25

5.1.4.1 Number of students benefited by guidance for competitive examinations and career counselling offered by the institution year-wise during the last five years

2016-17	2015-16	2014-15	2013-14	2012-13
204	225	239	NA	NA

File Description	Document
Number of students benefited by guidance for competitive examinations and career counselling during the last five years	<a href="#">View Document</a>

#### 5.1.5 Average percentage of students benefited by Vocational Education and Training (VET) during the last five years

**Response:** 0

5.1.5.1 Number of students attending VET year-wise during the last five years

2016-17	2015-16	2014-15	2013-14	2012-13
0	0	0	NA	NA



File Description	Document
Details of of students benefited by Vocational Education and Training (VET)	<a href="#">View Document</a>

#### 5.1.6 The institution has a transparent mechanism for timely redressal of student grievances including sexual harassment and ragging cases

**Response:** Yes

File Description	Document
Minutes of the meetings of student redressal committee, prevention of sexual harassment committee and Anti Ragging committee	<a href="#">View Document</a>
Details of student grievances including sexual harassment and ragging cases	<a href="#">View Document</a>

## 5.2 Student Progression

### 5.2.1 Average percentage of placement of outgoing students during the last five years

**Response:** 35.26

#### 5.2.1.1 Number of outgoing students placed year-wise during the last five years

2016-17	2015-16	2014-15	2013-14	2012-13
217	236	256	NA	NA

File Description	Document
Details of student placement during the last five years	<a href="#">View Document</a>

### 5.2.2 Percentage of student progression to higher education (previous graduating batch)

**Response:** 3.7

#### 5.2.2.1 Number of outgoing students progressing to higher education

**Response:** 22

File Description	Document
Details of student progression to higher education	<a href="#">View Document</a>

**5.2.3 Average percentage of students qualifying in State/ National/ International level examinations during the last five years (eg: NET/ SLET/ GATE/ GMAT/ CAT/ GRE/ TOEFL/ Civil Services/State government examinations)****Response:** 9.38**5.2.3.1 Number of students qualifying in state/ national/ international level examinations (eg: JAM/CLAT/NET/ SLET/ GATE/ GMAT/CAT/GRE/ TOEFL/ Civil Services/ State government examinations) year wise during last five years**

2016-17	2015-16	2014-15	2013-14	2012-13
14	16	16	NA	NA

**5.2.3.2 Number of students appearing in state/ national/ international level examinations (eg: NET/SLET/GATE/GMAT/CAT, GRE/TOEFL/ Civil Services/State government examinations) year-wise during the last five years**

2016-17	2015-16	2014-15	2013-14	2012-13
180	150	170	NA	NA

File Description	Document
Number of students qualifying in state/ national/ international level examinations during the last five years	<a href="#">View Document</a>

**5.3 Student Participation and Activities****5.3.1 Number of awards/medals for outstanding performance in sports/cultural activities at national/international level (award for a team event should be counted as one) during the last five years****Response:** 2**5.3.1.1 Number of awards/medals for outstanding performance in sports/cultural activities at national/international level (award for a team event should be counted as one) year-wise during the last five years**

2016-17	2015-16	2014-15	2013-14	2012-13
0	0	2	NA	NA

File Description	Document
Number of awards/medals for outstanding performance in sports/cultural activities at national/international level during the last five years	<a href="#">View Document</a>
e-copies of award letters and certificates	<a href="#">View Document</a>

### 5.3.2 Presence of an active Student Council & representation of students on academic & administrative bodies/committees of the institution

#### Response:

The Institute has active student's union, which organizes annual sports and cultural festival in the Institute. Apart from student's union, the Institution has various associations/clubs like National Cadet Corps (NCC), National Service Scheme (NSS), Youth Red Cross (YRC), Red Ribbon Club (RRC), Arts Association, Tamil Mandram, The Science Association, The Literary Association, The Association of Painters and Photographers, Alumni Association, Leo Club and Rotaract Club.

The following committees of the Institute are constituted with student members to receive their representations.

- Academic Council
- Board of Studies
- Institutional development Committee/Planning and Monitoring Committee
- Disciplinary Committee
- Student Affairs Committee
- Library Committee
- Grievance Redressal Committee

### 5.3.3 Average number of sports and cultural activities / competitions organised at the institution level per year

#### Response: 2

5.3.3.1 Number of sports and cultural activities / competitions organised at the institution level year-wise during the last five years

2016-17	2015-16	2014-15	2013-14	2012-13
2	2	2	NA	NA

File Description	Document
Number of sports and cultural activities / competitions organised per year	<a href="#">View Document</a>

## 5.4 Alumni Engagement

### 5.4.1 The Alumni Association/Chapters (registered and functional) contributes significantly to the development of the institution through financial and non financial means during the last five years

#### Response:

The Alumni Association of the Institute is registered and the donation to the Alumni Association is exempted from Income Tax under 80G. The Alumni Association has built an alumni center at a cost of one crore in the Institute with a seminar hall and two meeting room to facilitate the training and placement activities. The Alumni are providing scholarships to needy students in the Institute. The alumni of the Institute are supporting the current students for project works, inplant trainings, industrial visits and placements. The Alumni members frequently visit their Departments and deliver guest lecture and motivate the students. Alumni Meet is organized on second sunday of August month every year in a grand manner.



File Description	Document
Link for Additional Information	<a href="#">View Document</a>

### 5.4.2 Alumni contribution during the last five years(INR in Lakhs)

**Response:** ? 15 Lakhs

File Description	Document
Any additional information	<a href="#">View Document</a>
Alumni association audited statements	<a href="#">View Document</a>

#### 5.4.3 Number of Alumni Association / Chapters meetings held during the last five years

**Response:** 0

##### 5.4.3.1 Number of Alumni Association /Chapters meetings held year-wise during the last five years

2016-17	2015-16	2014-15	2013-14	2012-13
00	0	0	NA	NA

File Description	Document
Number of Alumni Association / Chapters meetings conducted during the last five years.	<a href="#">View Document</a>

## Criterion 6 - Governance, Leadership and Management

### 6.1 Institutional Vision and Leadership

#### 6.1.1 The governance of the institution is reflective of an effective leadership in tune with the vision and mission of the institution

##### Response:

The Governing Body of the Institute (Board of Governors) periodically meets and design and develop the strategic plans to achieve the vision and mission of the Institution. The Chairman of Board of Governors is Principal Scientist from CSIR Laboratory and Industrial Member is CEO of The Salem Aeropark industry. They bring their own experiences in their organizations to develop the Institution to No.1 among Government Colleges in the State of Tamilnadu. Their continuous involvement in the development activities of the Institute motivates the faculty members of the Institute to dedicatedly work for upliftment of the Institution. The Governing Body design and approve the short term and long term plans of the Institute and other recommendations from the various stakeholders.

Under the effective leadership of the Principal of this Institution, the faculty members and other supporting staffs of the Institute dedicatedly work towards the achievement of vision and mission of the Institute. The faculty meetings at Institute level and Department level are convened periodically to design and assess the progress of short term and long term development plans. The faculty members of the Institute bridge the gap between the various stakeholders of this Institute and the Head of the Institution. Hence, the recommendations, suggestions and feedbacks from the various stakeholders has been taken directly to the Head of the Departments/Head of the Institution and implemented in the short term and long term development plans of the Institute.

File Description	Document
Link for Additional Information	<a href="#">View Document</a>

#### 6.1.2 The institution practices decentralization and participative management

##### Response:

The Head of the Institution ensures the participation of each and every individual of the Institute in the development activities of the Institute. The recommendations, suggestions and feedbacks from various stakeholders of the Institute like students, faculty members, alumni, employers, parents, etc are considered and appropriately implemented in the short term and long-term action plans of the Institute. The decentralization is practiced in the Institute. The Head of the Departments and senior professors are act as the convener of various sub-committees constituted in the Institute. These sub-committees are constituted in such a way to involve various stake holders of the Institute to receive their representation. For example, building and works committee of the Institute constituted with senior professors from Civil Engineering Department, PWD Engineers, External Structural Engineering and an Architect. The members of the various committees are listed below. Hence, the Institute is very keen to involve all the people of the Institute in its development activities.

## BOARD OF GOVERNORS

S. No.	Name	Position (Chairman / Member)	Professional Designation	Telephone Number	E-mail	Address
1.	Dr. R. Selvaraj	Chairman	Principal Scientist	9443569083	selvarajceci@gmail.com	Head, Civil Engineering Division, CECRI, Karaikudi-6.
2.	Mr. R. Sundaram	Member / Industrialist	Chief Executive Officer (CEO)	9443222805	ceo@thesalemaeropark.com	The Salem Aero Park, Mallur, Salem Dt.
3.	Dr. P.G. Venkatakrishnan	Member / Secretary / Ex. Officer	Principal	9443207048	pgv.net@gmail.com	Govt. College of Engineering, Salem-11.
4.	Dr. G. Vimala Rosaline	Member / Senior Professor	HOD / Civil	9443344716	vimala6686@gmail.com	Govt. College of Engineering, Salem-11.
5.	Dr. M. Chandrasekaran	Member / Senior Professor	HOD / ECE	997817412	dmcs123@yahoo.com	Govt. College of Engineering, Salem-11.
6.	Dr. P.M. Kavimani	Member / Educationalist	AD / Poly (Rtd)	9443194453	kavimanipm@gmail.com	6277A, New No.528, 1 <sup>st</sup> Street, Manickavasagam Nagar, Salem-5.
7.		Member / State Govt. Nominee	AD / Poly	(044) 2231018		Directorate of Technical Education, Chennai-25.
8.	Mr. Devarajan	Member / Ex. Officer	Ex-Officio FAXCAO	(044) 2231018		Directorate of Technical Education, Chennai-25.
9.	Dr. T.V. Geetha	Member / University Nominee	Prof. / CSE	(044) 22338796	tvgeetha@csannauni.edu	Anna University, Chennai.

14

## GOVERNMENT COLLEGE OF ENGINEERING, SALEM-11

The following sub committees are constituted for enhancing the academic activities of the institution for the academic year 2017-18

## ACADEMIC COMMITTEE

Chairman	Principal	Dr. P.G. Venkatakrishnan
Convener	Dr. G. Vimala Rosaline, Prof/Civil	
Senior Professor	Dr. G. Vimala Rosaline, Prof/Civil	
Experts form industries-3	Mr. B.M. Hasan, AVP, JSW, Mechani	
Academic research experts from outside-2	Mr. M. Balaji, Frontline Electronics, Salem	
COE/Chief Superintendent	Mr. Muthukumar, DGM, SSP, Salem	
HOD's of all departments	Dr. Muthupandi, Prof/NIT, Trichy	
Alumni-I	Dr. T.V. Gopal, Anna University, Chennai	
	Dr. D. Shoba Rajkumar, COE	
	Dr. T. Balusamy, Deputy COE	
	Dr. V. Kathik, Asst. COE	
	Dr. G. Vimala Rosaline, Prof/Civil	
	Dr. R. Shanmuga Lakshmi, HOD-EEE	
	HOD Metallurgy	
	Dr. R. Vijayan, HOD - Mech.	
	Dr. M. Shanthi, HOD - ECE	
	Dr. A.M. Kalpana, HOD - CSE	
	Dr. K. Kannan, HOD - Chemistry	
	Dr. R. Vimala, HOD -Physics	
	Mrs. S. Leema Mary, HOD-Maths	
	HOD English	
	Mr. Pandiyan, DGM, SSP	

## FINANCE COMMITTEE

Chairman	Principal	Dr. P.G. Venkatakrishnan
Convener	Dr. G. Vimala Rosaline, Prof. & HOD /Civil	
HODs ( by rotation) -2	Dr. G. Vimala Rosaline, Prof. & HOD /Civil	
Nominee of the BOG- 1	Dr. R. Vijayan, Prof. & HOD - Mech.	
BURSAR	F & CAO	
	Directorate of Technical Education, Chennai- 600 025	
	Thiru. V. Govindaraja	

15

**BUILDINGS AND WORKS COMMITTEE**

Chairman	Principal	Dr. P.G. Venkatakrishnan
	Convener	Dr. G. Vimala Rosaline, Prof. & HOD /Civil
MEMBERS	Senior Professors from Civil Engg Department	Dr. G. Vimala Rosaline, Prof. & HOD /Civil Prof. V.C.A. Asok kumar AP/Civil
	Executive Engineer - PWD	Er. Badri Narayanan /Asst. Engineer, PWD, GCE-Salem
	Structural Engineer from outside - 1	Thiru. A.V. Sekar, Structural Engineer, Salem
	Architect	Thiru. Obli, B.Arch Consultant
	A.E Electrical(PWD) -1	Er. K. Sundararaju/Asst Engineer, PWD (Electrical), Salem
	PA to Principal	Thiru. B. Duraisamy

**PURCHASE COMMITTEE**

Chairman	Principal/Senior Professor	Dr. P.G. Venkatakrishnan
	Convener	Dr. R. Vijayan, Prof. & HOD / Mech
MEMBERS	HOD by rotation	Dr. R. Vijayan, Prof. & HOD / Mech
	State fund	Dr. G. Vimala Rosaline, Prof. /Civil
	TEQIP fund	Dr. A.M. Kalpana, HOD/CSE
	Expert from other institution	Dr. R. Subramanian, Asso. Prof / Metallurgy, PSG College of Technology, Coimbatore
	PA to Principal	Thiru. B. Duraisamy

**DISCIPLINARY COMMITTEE**

Chairman	Principal	Dr. P.G. Venkatakrishnan
	Convener	Dr. R. Shanmugalakshmi, Prof. & HOD EEE
MEMBERS	Senior Prof.	Dr. R. Vijayan, Prof. & HOD Mech
	Associate Warden / Deputy Warden (1M + 1F)	Prof. P. Sundararaj, Asso. Prof/Metallurgy Dr. T. Balusamy, Asst. Prof. Mech Dr. B. Vivekanandan, Asst. Prof. Mech Dr. P. Karpagavalli, Asst. Prof. EEE
	Ministerial Staff - 1 (BURSAR/PA)	Thiru. B. Duraisamy, P.A to Principal
	Non Teaching Technical Staff - 1	Thiru. S. Kannan, Mechanic/Civil
	Students Representatives (1M +1F)	Selvan. J.V. Sakthivel, IV year EEE Selvi. M. Janani, IV Year CSE

16

**INSTITUTIONAL DEVELOPMENT COMMITTEE**

Chairman	Principal	Dr. P.G. Venkatakrishnan
	Convener	Dr. G. Vimala Rosaline, Prof. & HOD /Civil
MEMBERS	HOD's of all Department	Dr. G. Vimala Rosaline, Prof. & HOD /Civil Dr. R. Vijayan, Prof. & HOD/Mech Dr. R. Shanmuga Lakshmi, Prof. & HOD/EEE Prof. & HOD of Metallurgy Dr. M. Shanthi, HOD/ECE Dr. A.M. Kalpana, HOD - CSE Mrs. Leema Mary, HOD-Maths Dr. K. Kannan, Prof. & HOD - Chemistry Dr. R. Vimala, HOD/Physics HOD of English
		Alumni Member -1 Mr. Thangamaniamaran, Construction Entrepreneur, Pondicherry.
		Senior Faculty member from University/other college Dr. P. Sathya, Asso. Prof / Production Engg., NIT, Trichy
		Expert from Industries Mr. Prabakaran, Executive Engineer/ TNEB Mr. S. Natarajan, DGM, Salem Steel Plant, Salem
		Assistant Professor-1 Dr. K. Sudha, Asst. Prof/Civil
		Ministerial Staff-1 Thiru. B. Duraisamy, PA to Principal
		Non Teaching Staff-1 Mr. M. Perumal, Electrician, EEE
		Students - (1F+1M) Selvan. M. Senthil Kumar, IV Yr, Mech Selvi. Sabita, IV Yr, Mech

17



## STUDENTS AFFAIRS COMMITTEE

Chairman	Principal	Dr. P.G. Venkatakrishnan
	Convener	Dr. R. Vijayan, Prof. & HOD - Mech
MEMBERS	NSS Officer-1	Tmt. S. Deepa, AP/Physics
	Physical Director-1	Mr. A. Srinivasan, PTI (i/c)
	Placement & Training Officer - 1	Dr. V. Rajkumar, Asso. Prof./Civil
	Medical Officer-1	Dr. S. Viswasvaran
	Senior Faculty Members - 2	Dr. M. Shanthi, HOD/ECE Tmt. S. Leema Mary, HOD of Maths
	Students - (1 M+1 F)	Selvan. K. Naveen Kumar, IV Yr EEE Selvi. Alamelu, IV Yr Met

## LIBRARY COMMITTEE

Chairman	Principal	Dr. P.G. Venkatakrishnan
	Convener	Dr. G. Vimala Rosaline, Prof. & HOD/Civil
HODs of all Departments / Senior faculty		Dr. G. Vimala Rosaline, Prof. & HOD/Civil
		Dr. R. Vijayan, HOD - Mech
		Dr. R. Shanmugalakshmi, Prof. & HOD EEE
		Prof. & HOD / Metallurgy
		Dr. M. Shanthi, HOD/ECE
		Dr. A.M. Kalpana, HOD - CSE
		Tmt. S. Leema Mary, HOD of Maths
		Dr. K. Kannan, HOD - Chemistry
		Dr. R. Vimala, HOD / Physics
		HOD - English
Librarian		Thiru. R. Jagannathan, SLGr. Lib.
Student representatives (1-M, 1-F, 1-SC/ST)		1. Selvan. Pradeep, IV Yr Met 2. Selvi. Sree Vathsala, IV Yr Civil

18

## GRIEVANCE REDRESSAL COMMITTEE

Chairman	Principal	Dr. P.G. Venkatakrishnan
	Convener	Dr. K. Kannan, Prof. & HOD, Chemistry
MEMBERS	Senior Faculty (1M+1F)	Dr. K. Kannan, Prof. & HOD, Chemistry Dr. Shoba Rajkumar, Asso. Prof, Civil
	Ministerial Staff -1	Mr. R. Karthikeyan, Superintendent
	Parents -2	Mr. K. Senthil kumar, Chola Constructions, Salem Thiru. S.V. Selvamurugan, Junior Draughting Officer, Civil
	Non Teaching Staff-2	1.Thiru. S.V. Selvamurugan, Junior Draughting Officer, Civil 2.Thiru. P. Asokan, Lab Assistant, Met.
	Administrative Staff (PA)-1	Thiru. B. Duraisamy, P.A to Principal
	Student representatives(1+1)	Selvan. R. Periyasamy, ME Thermal Selvan. P. Shanmugam, ME CAD
	Representation from weaker sections	Dr. A.M. Kalpana

## ANTI GENDER HARASSMENT COMMITTEE

Chairman	Principal	Dr. P.G. Venkatakrishnan
	Convener	Dr. R. Vimala, Asso. Prof. Physics
MEMBERS	Senior Female Professor-1	Dr. R. Vimala, Asso. Prof. Physics
	Senior Male Professor -1	Dr. V. Rajkumar, Asso. Prof./Civil
	Lawyer to be Nominated by BOG	Mrs. Sumathi

## FACULTY AND STAFF DEVELOPMENT COMMITTEE

Chairman	Principal	Dr. P.G. Venkatakrishnan
	Convener	Dr. R. Shanmugalakshmi, Prof. & HOD EEE
MEMBERS	Senior Faculty (P-1, Asso. prof -1)	Dr. R. Shanmugalakshmi, Prof. & HOD EEE Mr. P. Sundarajan, Asso. Prof. Mett.
	Senior Teaching Staff	Mrs. S. Leema Mary, HOD/Maths
	Ministerial Staff	Mr. R. Karthikeyan, Superintendent
	Non Teaching Staff	Mr. P.S. Chandrasekaran, Mechanic CSE

19

## 6.2 Strategy Development and Deployment

## 6.2.1 Perspective/Strategic plan and Deployment documents are available in the institution

## Response:

The Board of Governors and Head of Institution have a vision to make this Institution as No. 1 ranked State Government funded Engineering Institution in Tamilnadu by the year 2020. The following strategies are planned to achieve the Vision – 2020.

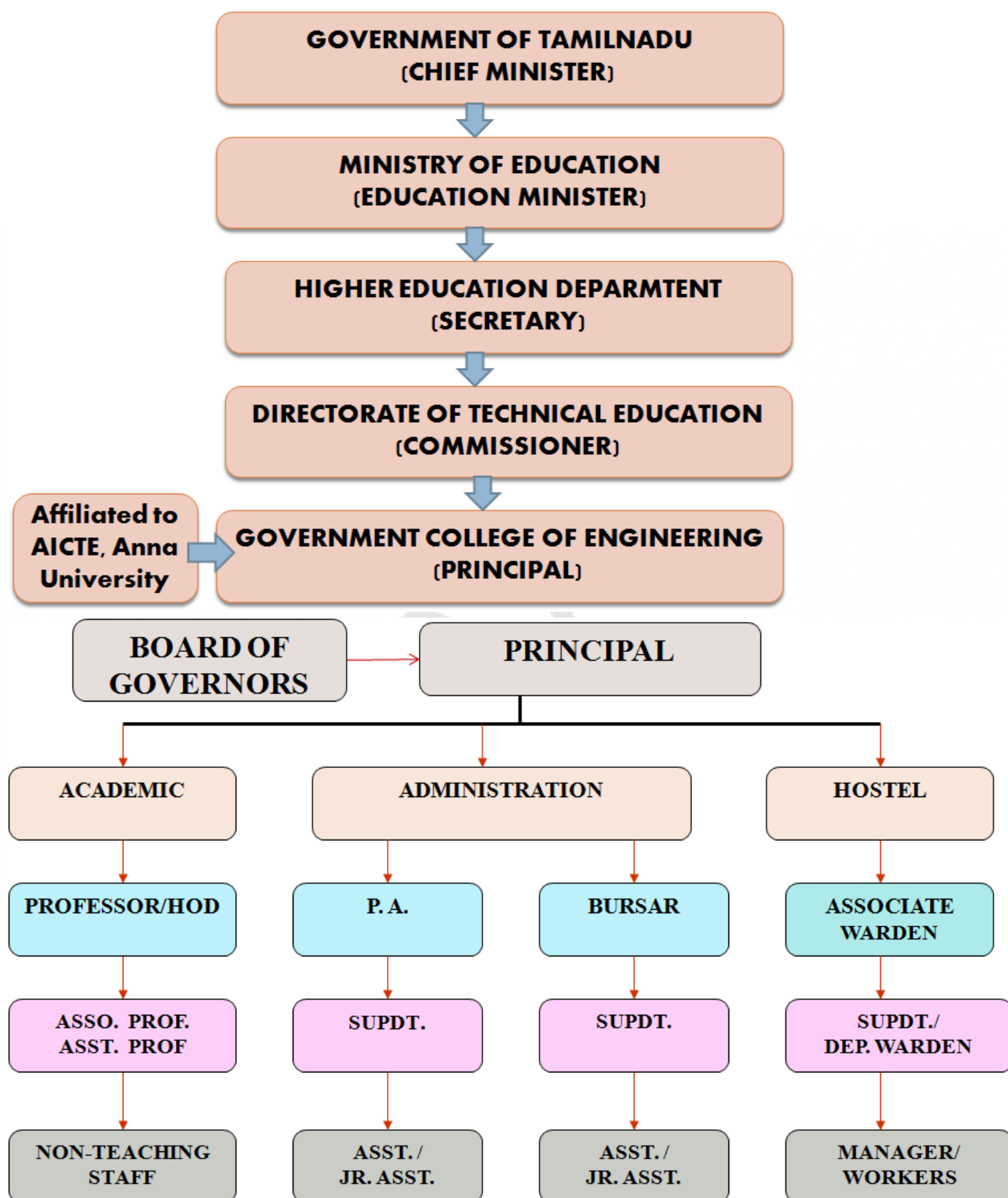
S.No.	Strategic Plan	Deployment
1	Research grants from various funding agencies	<ul style="list-style-type: none"> <li>Advertisements on call for proposals from various funding agencies are communicated to faculty members and insisted to submit proposal on time</li> </ul>
2	Organizing conferences, faculty development programs, capacity development programs, etc	<ul style="list-style-type: none"> <li>TEQIP funding may be utilized to organize international conference</li> <li>Faculty members can be encouraged to attend AICTE/UGC or other agencies for funding</li> <li>Faculty members are encouraged to collaborate with industries and corporates to organize programs</li> </ul>
3	Enhanced interaction with industries	<ul style="list-style-type: none"> <li>Signing of MoUs with industries</li> <li>Invite industrial experts to deliver lectures</li> </ul>

4	Academic performance of the students	<ul style="list-style-type: none"> <li>• Encourage students to take internships</li> <li>• Student learning capacity to be assessed at the beginning of the semester and special attention given to slow learners</li> <li>• Results of continuous internal assessment to be analyzed and counseling to be given to students.</li> <li>• Invite experts from academia/R&amp;D organizations/Industries to deliver Guest lectures to students each course they are studying</li> </ul>
5	Increasing PhD admission	<ul style="list-style-type: none"> <li>• Research assistantship to the full time scholars of the Institute</li> </ul>
6	Filing of patents	<ul style="list-style-type: none"> <li>• Organizing workshop for faculty members on Intellectual Property rights</li> <li>• Institute will pay the patent filing charges</li> </ul>
7	Increasing number of Research Publications	<ul style="list-style-type: none"> <li>• Fiscal incentives have been provided to faculty members for their research publications</li> <li>• Research publication in Conference/Journal is compulsory for PG students.</li> </ul>
8	Establishing Central Instrumentation Facility	<ul style="list-style-type: none"> <li>• Procurement of state of the art equipment in all branches to serve the internal and external research community</li> </ul>
9	Creation of Center of Excellence in all departments	<ul style="list-style-type: none"> <li>• Each department in the Institute has been developing center of Excellence in their discipline</li> </ul>
10	Creating Entrepreneurs	<ul style="list-style-type: none"> <li>• Start-up cell has been initiated in the Institute with a full time faculty member as in-charge</li> <li>• Workshops for students on entrepreneurship are conducted frequently.</li> </ul>

### 6.2.2 Organizational structure of the institution including governing body, administrative setup, and functions of various bodies, service rules, procedures, recruitment, promotional policies as well as grievance redressal mechanism

#### Response:

The organizational governance structure of the Institute is given below.



**Recruitment:** Entry level posts (Assistant Professor) only - Direct recruitment through Teachers Recruitment Board (TRB) by Government of Tamilnadu.

**Promotion:** Based on seniority and as per State Government norms and through Career Advancement Scheme

Grievance Redressal Committee constituted with male and female faculty members, ministerial staff,

parents, non-teaching staff, administrative staff, student representatives to address grievances of the various stakeholders of the Institute.

### 6.2.3 Implementation of e-governance in areas of operation

- 1.Planning and Development
- 2.Administration
- 3.Finance and Accounts
- 4.Student Admission and Support
- 5.Examination

**Response:** Any 1 of the above

File Description	Document
Screen shots of user interfaces	<a href="#">View Document</a>
Details of implementation of e-governance in areas of operation Planning and Development,Administration etc	<a href="#">View Document</a>

### 6.2.4 Effectiveness of various bodies/cells/committees is evident through minutes of meetings and implementation of their resolutions

**Response:**

The Board of Governors and Sub-committee meetings are periodically conducted in the Institute. The committees effectively discuss the issues raised by its members and find the solution to issues. The feedbacks and representations from the members are appropriately converted into short term and long term plans. The date of meeting and agenda are communicated to the sub committee members well in advance to enable them to collect representations and suggestions from their group of people. In every meeting chairman assess the implementation of resolutions made in the previous meetings. The sample minutes of the meetings are given in the additional information of this section.

File Description	Document
Any additional information	<a href="#">View Document</a>

## 6.3 Faculty Empowerment Strategies

### 6.3.1 The institution has effective welfare measures for teaching and non-teaching staff

**Response:**

The Institute gives more importance to the welfare of its teaching and non-teaching staffs. The Institute

provides residential quarters to its staff members. Inside the campus the facilities like, canteen, bank extension counter, post office, gymnasium, sports facilities and health centre are available. The other welfare measures like health insurance, pension scheme, etc are as per the Tamilnadu State Government norms.

### **CONVEYANCE**

A bus is run regularly between the campus and Salem Town for the benefit of students & staff members.

### **BANKING**

The Extension Counter of State Bank of India, Omalur Branch functions at the college campus for all students and staff members.

Working Hours: 10-30 a.m. to 1-30 p.m. Monday to Friday  
10-30 a.m. to 11-30 a.m. on Saturdays

### **CANTEEN**

A Canteen is run for the convenience of the students and the staff of the college.

### **HEALTH CENTRE**

A full time Medical Officer is in-charge of the college dispensary which takes care of the medical needs of the in-mates of the campus.

Working Hours : 7.30 a.m. to 10.30 a.m.

3.00 p.m. to 5.00 p.m.

Weekly Holiday : Monday

### **POST OFFICE**

A post-office by name "SALEM - 11" is located in Periyar University, PRIDE Campus, Salem - 636 011. Ph : 2346358

### **6.3.2 Average percentage of teachers provided with financial support to attend conferences / workshops and towards membership fee of professional bodies during the last five years**

**Response:** 19.66

6.3.2.1 Number of teachers provided with financial support to attend conferences / workshops and towards membership fee of professional bodies year-wise during the last five years

2016-17	2015-16	2014-15	2013-14	2012-13
32	14	2	NA	NA

File Description	Document
Details of teachers provided with financial support to attend conferences, workshops etc. during the last five years	<a href="#">View Document</a>

### 6.3.3 Average number of professional development /administrative training programs organized by the institution for teaching and non teaching staff during the last five years

**Response: 14**

6.3.3.1 Total number of professional development / administrative training programs organized by the Institution for teaching and non teaching staff year-wise during the last five years

2016-17	2015-16	2014-15	2013-14	2012-13
19	17	8	NA	NA

File Description	Document
Details of professional development / administrative training programs organized by the Institution for teaching and non teaching staff	<a href="#">View Document</a>

### 6.3.4 Average percentage of teachers attending professional development programs viz., Orientation Program, Refresher Course, Short Term Course, Faculty Development Program during the last five years

**Response: 81.68**

6.3.4.1 Total number of teachers attending professional development programs, viz., Orientation Program, Refresher Course, Short Term Course, Faculty Development Programs year-wise during the last five years

2016-17	2015-16	2014-15	2013-14	2012-13
73	73	66	NA	NA

File Description	Document
Details of teachers attending professional development programs during the last five years	<a href="#">View Document</a>

### 6.3.5 Institution has Performance Appraisal System for teaching and non-teaching staff

#### Response:

The Directorate of Technical Education of Tamilnadu made it mandatory to submit confidentiality report (CR) every year for all faculty members of the Institute. The staff members need to self declare the following information in the CR form for the assessment period.

- Courses taught and success rate in those courses
- Development of any new methodology/using of ICT tools for teaching
- Contribution to the development of the laboratories
- Additional academic and administrative responsibilities taken by staff member
- Support provided to the Head of the Department and Head of the Institution
- Research contributions
- Additional qualifications, etc.

The confidentiality report also has the section in which the head of the Department ranks the employee on different parameters ranging from communication skill to team work to the integrity of the employee. The Head of the Institution reviews the ranking made by the head of the department.

## 6.4 Financial Management and Resource Mobilization

### 6.4.1 Institution conducts internal and external financial audits regularly

#### Response:

Internal Audit consists of regular checks on deposits, with drawl and payments by or to the institution through the bank statements. The Directorate of Technical Education conducts external audits every year during the month of April/May. A compliance report is submitted for the information and consideration to the competent authority. The internal stock verification is conducted every year in all the Departments and stock verification team submits the report to the Head of the Institution. The institution submits its budgetary requirements annually accordingly the institution receives the block grant from state government for different purpose.

### 6.4.2 Funds / Grants received from non-government bodies, individuals, Philanthropists during the last five years (not covered in Criterion III) (INR in Lakhs)

Response: 0

6.4.2.1 Total Grants received from non-government bodies, individuals, philanthropists year-wise during the last five years (INR in Lakhs)

2016-17	2015-16	2014-15	2013-14	2012-13
0	0	0	NA	NA

File Description	Document
Details of Funds / Grants received from non-government bodies during the last five years	<a href="#">View Document</a>

### 6.4.3 Institutional strategies for mobilisation of funds and the optimal utilisation of resources

#### Response:

The Institute receives funding from State Government as Block Grant and TEQIP. The Institute has finance committee to monitor the effective mobilization of funds and optimal utilization of resources. The constitution of Finance Committee is given below.

1	Chairman	The Principal
2	Convener	The Vice-Principal
3	Members	Head of the Departments (by rotation) -2 Nominee of the BOG – 1 Bursar

The BOG nominated the Finance Advisor and Chief Accounts Officer (FA & CAO) of Directorate of Technical Education, Tamilnadu as the member of the Financial Committee of the Institute. The convener of purchase committee and building and works committee collects the proposals for procurement, maintenance and infrastructure requirements from all departments and submit it in the committee meetings for approval. The Board of Governors taking overall monitoring of the optimal utilization of resources.

## 6.5 Internal Quality Assurance System

### 6.5.1 Internal Quality Assurance Cell (IQAC) has contributed significantly for institutionalizing the quality assurance strategies and processes

#### Response:

The Institute has the following committees with internal faculty members to develop and monitor the quality assurance strategies and processes.

- Approval, Affiliation, Accreditation Committee (AICTE, NBA, Anna University, etc.)



- Autonomy Renewal Committee
- Quality Assurance Cell and Academic Audit

The committees are headed by the senior faculty members of the Institute and members from each department in the Institute. These committees are effectively works throughout year for AICTE approval, Anna University Approval, NBA accreditation, UGC Autonomous status of the Institute.

The Under-graduate B.E. courses Metallurgical Engineering, Electronics and Communications Engineering and Post-graduate M.E. courses Computer Aided Design, Structural Engineering and Thermal Engineering are accredited by the National Board of Accreditation (NBA).

The B.E Electrical and Electronics Engineering programme has undergone NBA peer team visit during January 2018 and waiting for the results.

### **6.5.2 The institution reviews its teaching learning process, structures & methodologies of operations and learning outcomes at periodic intervals through IQAC set up as per norms**

#### **Response:**

The Board of Studies of each discipline assesses teaching - learning process, attainment of learning outcomes of various Departments and suggests recommendation for improvement. The acadmic council review the implementation of BOS recommendations. The following course delivery methods and modes are implemented in the Institute based on the recommendations.

<b>Course delivery methods</b>	<b>Course delivery modes</b>
1. Lecture 2. Group Discussion 3. Seminar 4. Quiz 5. Demonstration 6. Industrial Visit 7. Project 8. Guest Lecture 9. Online learning resources.	1. Video Film 2. Power Point presentation 3. Models 4. Charts 5. Animation 6. Overhead projector

#### **Lecture:**

- An economical and efficient method for delivering information to large number of students.
- Lectures are a straightforward way to impart knowledge to students quickly.

#### **Group Discussion:**

- Creates a favorable atmosphere for the students to develop their imagination and creativity.
- Communication is greatly promoted through group learning.

**Seminar:**

- Good opportunity for interaction between the tutor and students.
- Students are able to check their understanding and can seek advice when they recognize that their understanding is incomplete.

**Quiz:**

- Quizzes help to evaluate student learning in relation to the *teacher's instructional methods*.

**Demonstration:**

- Demonstration permits a student to learn by observation.
- Demonstration typically used to introduce a new skill to a whole group for their learning.

**Industrial Visit:**

- It provides students with an opportunity to learn practically through interaction, working methods and employment practices.

**Project: (Mini project and Final year project work)**

- This course mainly gives positive exposure to implementation or development of solution to a problem. One major objective of such set practical's is to develop students' technical skills.
- Projects represent important activities in any engineering undergraduate Programme that contribute to the achievement of various essential learning outcomes and Programme outcomes.

**Online Learning Resources:****National Programme on Technology Enhanced Learning (NPTEL)**

- E-learning through online Web and Video courses is provided in Engineering, Science and humanities streams by NPTEL. The mission of NPTEL is to enhance the quality of engineering education in the country by providing **free online courseware**. <http://nptel.iitm.ac.in/>
- NPTEL videos are available readily in the Digital library and departmental computers which can be used by the students for effective learning. Students can also take a copy of those videos for their reference.

**6.5.3 Average number of quality initiatives by IQAC for promoting quality culture per year****Response: 0****6.5.3.1 Number of quality initiatives by IQAC for promoting quality year-wise for the last five years**

2016-17	2015-16	2014-15	2013-14	2012-13
0	0	0	NA	NA

File Description	Document
Number of quality initiatives by IQAC per year for promoting quality culture	<a href="#">View Document</a>

#### 6.5.4 Quality assurance initiatives of the institution include

- 1.Regular meeting of Internal Quality Assurance Cell (IQAC); timely submission of Annual Quality Assurance Report (AQAR) to NAAC; Feedback collected, analysed and used for improvements
- 2.Academic Administrative Audit (AAA) and initiation of follow up action
- 3.Participation in NIRF
- 4.ISO Certification
- 5.NBA or any other quality audit

**Response:** Any 2 of the above

File Description	Document
e-copies of the accreditations and certifications	<a href="#">View Document</a>
Details of Quality assurance initiatives of the institution	<a href="#">View Document</a>
Annual reports of Institution	<a href="#">View Document</a>

#### 6.5.5 Incremental improvements made during the preceding five years (*in case of first cycle*) Post accreditation quality initiatives (*second and subsequent cycles*)

**Response:**

Quality assurance cell of the Institute deploy quality measures to ensures the incremental improvements in the Institute. The Institute moved to accreditation based on Outcome Based Education. The following five programs are accredited by NBA.

- B.E. Metallurgical Engineering
- B.E. Electrical and Electronics Engineering
- M.E. Structural Engineering
- M.E. Computer Aided Design
- M.E. Thermal Engineering

The following quality initiatives are implemented in the Institute.

- Technical lectures by External Experts (Academic, Industry and R&D)
- GATE coaching class Sponsorship by Alumni (1992 batch) for 80 students : 8 lakhs
- Mentoring to students

- Remedial classes for slow learners
- Mandatory in-plant training (Audit course)
- Choice Based Credit System (CBCS)
- Accelerated mode of study
- Faculty Development Programmes (FDP)
- Campus wide wi-fi facility
- Smart Classrooms
- Remote Access to library e-resources
- Green Campus

NAAC

## Criterion 7 - Institutional Values and Best Practices

### 7.1 Institutional Values and Social Responsibilities

#### 7.1.1 Number of gender equity promotion programs organized by the institution during the last five years

**Response: 5**

##### 7.1.1.1 Number of gender equity promotion programs organized by the institution year-wise during the last five years

2016-17	2015-16	2014-15	2013-14	2012-13
1	1	1	NA	NA

#### File Description

List of gender equity promotion programs organized by the institution

#### Document

[View Document](#)

#### 7.1.2 Institution shows gender sensitivity in providing facilities such as

- a) Safety and Security
- b) Counselling
- c) Common Room

**Response:**

The Institution is more concern about the safety and security of its students and employees. Sufficient number of security personnels are employed in the Institute. The girls hostel of the Institute secured by boundary walls of more than 8 feet height with barbed wired surmounted on the walls to prevent the unauthorized access to the hostel premises. The entry points of hostel premises are manned by two security personnels and woman security personnel also deployed to ensure the physical security checks of the girl student or visitors, if needed. Common rooms are provided in the hostel premises. A counselling/interaction session was conducted for all the girl students of the Institute on 07.03.2013 by Dr. S. Vinodhini, Counsellor and Doctor. The class advisors and chief faculty advisors provide counselling to the needy students.

#### 7.1.3 Percentage of annual power requirement of the Institution met by the renewable energy sources

**Response: 0**

7.1.3.1 Annual power requirement met by renewable energy sources (in KWH)	
File Description	Document
Details of power requirement of the Institution met by renewable energy sources	<a href="#">View Document</a>

<b>7.1.4 Percentage of annual lighting power requirements met through LED bulbs</b>	
<b>Response: 5</b>	
7.1.4.1 Annual lighting power requirement met through LED bulbs (in KWH)	
Response: 996	
File Description	Document
Details of lighting power requirements met through LED bulbs	<a href="#">View Document</a>
Any additional information	<a href="#">View Document</a>

<b>7.1.5 Waste Management steps including:</b>	
<ul style="list-style-type: none"> <li>• Solid waste management</li> <li>• Liquid waste management</li> <li>• E-waste management</li> </ul>	
<b>Response:</b>	
<p>Two number of oxidation ponds or wastewater stabilization ponds are present in the Institute to treat wastewater for reducing organic content and remove pathogens from waste water through the interaction of sunlight, bacteria, and algae. Algae grow using energy from the sun and carbon dioxide and inorganic compounds released by bacteria in water. During the process of photosynthesis, the algae release oxygen needed by aerobic bacteria. Oxidation ponds involve natural treatment processes which take time because removal rates are slow. Therefore, both the oxidation ponds are larger in area. Solid wastes in the Institute are collected in large dust bins at various locations and periodically removed by local panchayat. The Institute is planning to reuse the treated waste water for plantations in the campus.</p>	

<b>7.1.6 Rain water harvesting structures and utilization in the campus</b>	
<b>Response:</b>	
<p>Ground water resource gets naturally recharged through percolation. But due to indiscriminate development and rapid urbanization, exposed surface for soil has been reduced drastically with resultant reduction in percolation of rainwater, thereby depleting ground water resource. Rainwater harvesting is the</p>	



process of augmenting the natural filtration of rainwater in to the underground formation by some artificial methods. Tamil Nadu was the first state to make rainwater harvesting compulsory for every building to avoid groundwater depletion. As per the State Government direction, rooftop rainwater harvesting system has been implemented in the Institute buildings. All the outlets from the catchment area i.e. building terrace are connected through a pipe to a cylindrical recharge pits filled with sand gravel filter at the bottom. During the rainy periods rain water falls on the catchment areas are directly transported to recharge pits to raise the ground water table. The rainwater harvesting system implemented in the campus is shown below.



#### **7.1.8 Average percentage expenditure on green initiatives and waste management excluding salary component during the last five years**

**Response:** 0.09

7.1.8.1 Total expenditure on green initiatives and waste management excluding salary component year-wise during the last five years(INR in Lakhs)

2016-17	2015-16	2014-15	2013-14	2012-13
0	0	0	NA	NA

File Description	Document
Details of expenditure on green initiatives and waste management during the last five years	<a href="#">View Document</a>

**7.1.9 Differently abled (Divyangjan) Friendliness Resources available in the institution:**

1. Physical facilities
2. Provision for lift
3. Ramp / Rails
4. Braille Software/facilities
5. Rest Rooms
6. Scribes for examination
7. Special skill development for differently abled students
8. Any other similar facility (Specify)

**Response:** D. At least 2 of the above

File Description	Document
Resources available in the institution for Divyangjan	<a href="#">View Document</a>
link to photos and videos of facilities for Divyangjan	<a href="#">View Document</a>

**7.1.10 Number of Specific initiatives to address locational advantages and disadvantages during the last five years**

**Response:** 0

7.1.10.1 Number of specific initiatives to address locational advantages and disadvantages year-wise during the last five years

2016-17	2015-16	2014-15	2013-14	2012-13
0	0	0	NA	NA



File Description	Document
Number of Specific initiatives to address locational advantages and disadvantages	<a href="#">View Document</a>

#### 7.1.11 Number of initiatives taken to engage with and contribute to local community during the last five years (Not addressed elsewhere)

**Response:** 9

7.1.11.1 Number of initiatives taken to engage with and contribute to local community year-wise during the last five years

2016-17	2015-16	2014-15	2013-14	2012-13
0	2	2	NA	NA

File Description	Document
Details of initiatives taken to engage with local community during the last five years	<a href="#">View Document</a>

#### 7.1.12

**Code of conduct handbook exists for students, teachers, governing body, administration including Vice Chancellor / Director / Principal /Officials and support staff**

**Response:** Yes

File Description	Document
Any additional information	<a href="#">View Document</a>
URL to Handbook on code of conduct for students and teachers , manuals and brochures on human values and professional ethics	<a href="#">View Document</a>

#### 7.1.13 Display of core values in the institution and on its website

**Response:** No

File Description	Document
Provide URL of website that displays core values	<a href="#">View Document</a>

#### 7.1.14 The institution plans and organizes appropriate activities to increase consciousness about national identities and symbols; Fundamental Duties and Rights of Indian citizens and other

**constitutional obligations****Response:** Yes

File Description	Document
Details of activities organized to increase consciousness about national identities and symbols	<a href="#">View Document</a>
Any additional information	<a href="#">View Document</a>

**7.1.15 The institution offers a course on Human Values and professional ethics****Response:** Yes**7.1.16 The institution functioning is as per professional code of prescribed / suggested by statutory bodies / regulatory authorities for different professions****Response:** Yes**7.1.17 Number of activities conducted for promotion of universal values (Truth, Righteous conduct, Love, Non-Violence and peace); national values, human values, national integration, communal harmony and social cohesion as well as for observance of fundamental duties during the last five years****Response:** 20

7.1.17.1 Number of activities conducted for promotion of universal values (Truth, Righteous conduct, Love, Non-Violence and peace); national values, human values, national integration, communal harmony and social cohesion as well as for observance of fundamental duties year-wise during the last five years

2016-17	2015-16	2014-15	2013-14	2012-13
4	4	4	NA	NA

File Description	Document
List of activities conducted for promotion of universal values	<a href="#">View Document</a>

**7.1.18 Institution organizes national festivals and birth / death anniversaries of the great Indian personalities****Response:**

The Tamil Cultural Association of the Institute organizes Pongal Festival every year. All the students and staff members are taking pledges on the birth and death anniversaries of the great Indian personalities. The

teachers day and engineers day are celebrated on birth anniversary of Dr. Radhakrishnan and Sir Visvesvaraya, respectively.

1	January 30	Martyrdom of Mahata Gandhi	Martyr's day and anti-untouchability pledge
2	May 21	Death of Rajiv Gandhi	Anti Terrorism day pledge
3	August 20	Birth anniversary of Rajiv Gandhi	Communal Harmony day pledge
4	November 19	Birth anniversary of Indira Gandhi	National Integration Day Pledge

#### **7.1.19 The institution maintains complete transparency in its financial, academic, administrative and auxiliary functions**

##### **Response:**

The Institute is funded by State Government. The Directorate of Technical Education, Tamilnadu governs the Institute. The State Government rules and regulations are followed in all functions of the Institute. Hence, complete transparency is maintained in all of its financial, academic and administrative functions. Student admission to the Institute is carried out under Unified Single Window Admission system by Anna University, Chennai. All the functions of the Institute are monitored by Board of Governors of the Institute. Internal and external audits are conducted annually to ensure the transparency in accounts section. The promotion and other benefits to the employees are as per the state government norms.

## **7.2 Best Practices**

### **7.2.1 Describe at least two institutional best practices (as per NAAC Format)**

##### **Response:**

##### **Title of the Practice**

Accelerated Result Announcement for Outgoing Students

##### **Objectives of the Practice**

- To reduce the gap between last date of final semester examination and result announcement.
- To enable the outgoing graduates join the job immediately after the completion of the course

##### **The Context**

The final semester results to published as early as possible to enable the outgoing students to start their

career immediately after finishing the course. Usually it takes almost two weeks of time to publish final semester results. It was aimed to publish the results within a week from the end of the final semester examination.

### **The Practice**

The practice was successfully implemented in the academic year 2016-1017. The final semester examinations are finished on 28th April, 2017. The results were published on 5th May, 2017, the seventh day from the last examination of final year students. The works like preparation of answer scripts for valuation, completion of valuation, result processing, result passing board meeting, revised results after moderation, etc. should be completed within a week of time. The officials and staff members of Controller of Examinations took it as a challenge and completed within the prescribed period.

### **Evidence of Success**

The employers issue call letter only after seeing the candidate's final semester results. The practice served its purpose, the outgoing students were joined their job immediately after the completion of their course. The unplaced students are also benefited to attend the interviews with their complete results.

### **Problems Encountered and Resources Required**

- The biggest problem is catching the examiners for the valuation in a short period.
- The IT integration is very important for quick publication of results.

### **Title of the Practice**

Green and Clean Campus

### **Objectives of the Practice**

To increase the number of trees in the campus by tree plantation

To clean the bushes in the campus and make the campus looks attractive.

### **The Context**

The Institute is spread over an area of 231 acres. The total academic buildings are covered in 6.3 acres. If we leave the sports and residential complexes in the campus lot of empty land is available and they were covered with lot of bushes. A massive campus cleaning drive has been initiated in the academic year 2016-2017 using bulldozer. The students and alumni of the Institute has started to plant saplings in the campus on the occasions of Republic day, Independence Day, Teachers days, etc. The Institute has roped up the Salem District Forest Department to plant sapling in the empty land.

### **The Practice**

The forest department planted more than 7500 saplings in the campus. They have made fencing and appointed local safeguards for the saplings. The forest department has assured that they will take care of the trees for three years from the plantation. In coming years, the campus will be full of green trees.

#### Evidence of Success



#### Problems Encountered and Resources Required

The biggest problem is preventing planted saplings from cattle of surrounding community. Water scarcity during summer days for watering plants. Safeguarding plants from local intruders.

### 7.3 Institutional Distinctiveness

#### 7.3.1 Describe/Explain the performance of the institution in one area distinctive to its vision, priority and thrust

##### Response:

The vision of the Institute

We envision our students as excellent engineers not only in the field of Science and Technology, but also in good citizenship and discipline. Our commitment lies in producing comprehensive knowledge seekers and humane individuals, capable of building a strong and developed nation.

The Institute is committed to produce excellent engineers to serve this nation. Every year more than 500 engineers are outgoing from the Institute and they are serving the core and software Industries all over the India. The Institute is developing its facilities year by year to empower the student community of the Institute with excellent skills.

NAAC

## 5. CONCLUSION

---

### **Additional Information :**

About 8500 saplings have been planted over the entire campus recently to make a green campus.

The institution has vast land area which may facilitate for further expansion of starting new programmes and infrastructure facilities.

### **Concluding Remarks :**

The Institute has celebrated Golden Jubilee Year during 2016-2017. During the past 50 years, all the departments have not only established themselves but also equipped their laboratories sufficiently to cater the needs of the various Under-graduate, Post-graduate courses and Research programmes that are offered. The college is thus growing from strength to strength and gaining recognition for its contribution to the cause of Engineering Education.

## 6.ANNEXURE

### 1.Metrics Level Deviations

Metric ID	Sub Questions and Answers before and after DVV Verification																				
1.1.3	<p>Average percentage of courses having focus on Employability/ Entrepreneurship/ Skill development during the last five years    1.1.3.1. Number of courses having focus on employability/ entrepreneurship/ skill development year-wise during the last five years</p> <p>Answer before DVV Verification:</p> <table><tr><td>2016-17</td><td>2015-16</td><td>2014-15</td><td>2013-14</td><td>2012-13</td></tr><tr><td>42</td><td>42</td><td>42</td><td>42</td><td>42</td></tr></table> <p>Answer After DVV Verification :</p> <table><tr><td>2016-17</td><td>2015-16</td><td>2014-15</td><td>2013-14</td><td>2012-13</td></tr><tr><td>42</td><td>35</td><td>35</td><td>35</td><td>35</td></tr></table>	2016-17	2015-16	2014-15	2013-14	2012-13	42	42	42	42	42	2016-17	2015-16	2014-15	2013-14	2012-13	42	35	35	35	35
2016-17	2015-16	2014-15	2013-14	2012-13																	
42	42	42	42	42																	
2016-17	2015-16	2014-15	2013-14	2012-13																	
42	35	35	35	35																	
1.3.4	<p>Percentage of students undertaking field projects / internships</p> <p>1.3.4.1. Number of students undertaking field projects or internships</p> <p>Answer before DVV Verification : 329</p> <p>Answer after DVV Verification: 67</p> <p>Remark : As per HEI Clarification</p>																				
2.2.3	<p>Percentage of differently abled students (Divyangjan) on rolls</p> <p>2.2.3.1. Number of differently abled students on rolls</p> <p>Answer before DVV Verification : 23</p> <p>Answer after DVV Verification: 6</p> <p>Remark : From year 2016-17 as per SSR.</p>																				
2.3.3	<p>Ratio of students to mentor for academic and stress related issues</p> <p>2.3.3.1. Number of mentors</p> <p>Answer before DVV Verification : 79</p> <p>Answer after DVV Verification: 77</p>																				
2.4.4	<p>Percentage of full time teachers who received awards, recognition, fellowships at State, National, International level from Government, recognised bodies during the last five years</p> <p>2.4.4.1. Number of full time teachers receiving awards from state /national /international level from Government recognised bodies year-wise during the last five years</p> <p>Answer before DVV Verification:</p> <table><tr><td>2016-17</td><td>2015-16</td><td>2014-15</td><td>2013-14</td><td>2012-13</td></tr><tr><td></td><td></td><td></td><td></td><td></td></tr></table>	2016-17	2015-16	2014-15	2013-14	2012-13															
2016-17	2015-16	2014-15	2013-14	2012-13																	



1	3	0	0	2
---	---	---	---	---

Answer After DVV Verification :

2016-17	2015-16	2014-15	2013-14	2012-13
0	0	0	0	0

3.4.5 Number of research papers per teacher in the Journals notified on UGC website during the last five years

3.4.5.1. Number of research papers in the Journals notified on UGC website during the last five years

Answer before DVV Verification:

2016-17	2015-16	2014-15	2013-14	2012-13
51	57	52	28	31

Answer After DVV Verification :

2016-17	2015-16	2014-15	2013-14	2012-13
20	35	32	28	28

Remark : HEI Clarification response

3.5.2 Revenue generated from consultancy during the last five years

3.5.2.1. Total amount generated from consultancy year-wise during the last five years (INR in Lakhs)

Answer before DVV Verification:

2016-17	2015-16	2014-15	2013-14	2012-13
27.06	54.11	42.07	29.65	38.39

Answer After DVV Verification :

2016-17	2015-16	2014-15	2013-14	2012-13
46.753	57.68	18.584	27.133	24.73124

Remark : HEI Clarification response

3.7.3 Number of functional MoUs with institutions of National/ International importance, Other Institutions, Industries, Corporate houses etc., during the last five years (only functional MoUs with ongoing activities to be considered)

3.7.3.1. Number of functional MoUs with institutions of national, international importance, other universities, industries, corporate houses etc. year-wise during the last five years (only functional

MoUs with ongoing activities to be considered)

Answer before DVV Verification:

2016-17	2015-16	2014-15	2013-14	2012-13
7	6	6	6	7

Answer After DVV Verification :

2016-17	2015-16	2014-15	2013-14	2012-13
0	1	0	6	2

Remark : HEI Clarification response.

4.2.4 Average annual expenditure for purchase of books and journals during the last five years (INR in Lakhs)

4.2.4.1. Annual expenditure for purchase of books and journals year-wise during the last five years (INR in Lakhs)

Answer before DVV Verification:

2016-17	2015-16	2014-15	2013-14	2012-13
34.86	34.24	23.32	50.61	29.16

Answer After DVV Verification :

2016-17	2015-16	2014-15	2013-14	2012-13
0.087	41.4223	32.7684	7.659	17.9972

Remark : HEI Clarification response

5.3.1 Number of awards/medals for outstanding performance in sports/cultural activities at national/international level (award for a team event should be counted as one) during the last five years

5.3.1.1. Number of awards/medals for outstanding performance in sports/cultural activities at national/international level (award for a team event should be counted as one) year-wise during the last five years

Answer before DVV Verification:

2016-17	2015-16	2014-15	2013-14	2012-13
33	32	11	18	5

Answer After DVV Verification :

2016-17	2015-16	2014-15	2013-14	2012-13
0	0	2	0	0

5.4.3	<p>Number of Alumni Association / Chapters meetings held during the last five years</p> <p>5.4.3.1. Number of Alumni Association /Chapters meetings held year-wise during the last five years</p> <p>Answer before DVV Verification:</p> <table><tr><td>2016-17</td><td>2015-16</td><td>2014-15</td><td>2013-14</td><td>2012-13</td></tr><tr><td>1</td><td>1</td><td>1</td><td>1</td><td>1</td></tr></table> <p>Answer After DVV Verification :</p> <table><tr><td>2016-17</td><td>2015-16</td><td>2014-15</td><td>2013-14</td><td>2012-13</td></tr><tr><td>00</td><td>0</td><td>0</td><td>0</td><td>0</td></tr></table> <p>Remark : Document provided for Academic year 2018-19.</p>	2016-17	2015-16	2014-15	2013-14	2012-13	1	1	1	1	1	2016-17	2015-16	2014-15	2013-14	2012-13	00	0	0	0	0
2016-17	2015-16	2014-15	2013-14	2012-13																	
1	1	1	1	1																	
2016-17	2015-16	2014-15	2013-14	2012-13																	
00	0	0	0	0																	
6.5.4	<p>Quality assurance initiatives of the institution include</p> <ol style="list-style-type: none"><li>1. Regular meeting of Internal Quality Assurance Cell (IQAC); timely submission of Annual Quality Assurance Report (AQAR) to NAAC; Feedback collected, analysed and used for improvements</li><li>2. Academic Administrative Audit (AAA) and initiation of follow up action</li><li>3. Participation in NIRF</li><li>4. ISO Certification</li><li>5. NBA or any other quality audit</li></ol> <p>Answer before DVV Verification : Any 3 of the above Answer After DVV Verification: Any 2 of the above Remark : AAA and NBA From HEI Clarification and SSR</p>																				
7.1.3	<p>Percentage of annual power requirement of the Institution met by the renewable energy sources</p> <p>7.1.3.1. Annual power requirement met by renewable energy sources (in KWH)</p> <p>Answer before DVV Verification : 4942 Answer after DVV Verification: 0</p> <p>Remark : Documents/Invoice uploaded for LED lamps.</p>																				
7.1.11	<p>Number of initiatives taken to engage with and contribute to local community during the last five years (Not addressed elsewhere)</p> <p>7.1.11.1. Number of initiatives taken to engage with and contribute to local community year-wise during the last five years</p> <p>Answer before DVV Verification:</p> <table><tr><td>2016-17</td><td>2015-16</td><td>2014-15</td><td>2013-14</td><td>2012-13</td></tr><tr><td></td><td></td><td></td><td></td><td></td></tr></table>	2016-17	2015-16	2014-15	2013-14	2012-13															
2016-17	2015-16	2014-15	2013-14	2012-13																	

7	2	4	2	2
---	---	---	---	---

Answer After DVV Verification :

2016-17	2015-16	2014-15	2013-14	2012-13
0	2	2	3	2

Remark : HEI Clarification response

7.1.13 Display of core values in the institution and on its website

Answer before DVV Verification : Yes

Answer After DVV Verification: No

Remark : Core value is not displayed. Vision and mission displayed.

## 2.Extended Profile Deviations

ID	Extended Questions																				
1.1	<p>Number of programs offered year-wise for last five years</p> <p>Answer before DVV Verification:</p> <table><tr><td>2016-17</td><td>2015-16</td><td>2014-15</td><td>2013-14</td><td>2012-13</td></tr><tr><td>11</td><td>11</td><td>11</td><td>11</td><td>11</td></tr></table> <p>Answer After DVV Verification:</p> <table><tr><td>2016-17</td><td>2015-16</td><td>2014-15</td><td>2013-14</td><td>2012-13</td></tr><tr><td>16</td><td>16</td><td>16</td><td>16</td><td>16</td></tr></table>	2016-17	2015-16	2014-15	2013-14	2012-13	11	11	11	11	11	2016-17	2015-16	2014-15	2013-14	2012-13	16	16	16	16	16
2016-17	2015-16	2014-15	2013-14	2012-13																	
11	11	11	11	11																	
2016-17	2015-16	2014-15	2013-14	2012-13																	
16	16	16	16	16																	
1.2	<p>Number of all programs offered by the institution during the last five years</p> <p>Answer before DVV Verification : 11</p> <p>Answer after DVV Verification : 16</p>																				