

**1.1.1 Curriculum developed and implemented have relevance to the local, national, regional, and global developmental needs which is reflected in Programme outcomes (POs), Programme Specific Outcomes (PSOs) and Course Outcomes (COs) of the Programmes offered by the Institution.**

**Vision, Mission, PEOs, POs, PSOs and Cos – All Departments**

<b>Department</b>	<b>Description</b>	<b>Link</b>
B.E – Civil Engineering	Vision and Mission	<a href="#">1.1.1/ Link 1</a>
	Programme Educational Objectives (PEO)	<a href="#">1.1.1/ Link 2</a>
	Program Outcomes (PO)	<a href="#">1.1.1/ Link 3</a>
	Program Specific Outcomes (PSO)	<a href="#">1.1.1/ Link 4</a>
	R2018 - Curriculum and Syllabus	<a href="#">1.1.1/ Link 5</a>
	R2022 - Curriculum and Syllabus	<a href="#">1.1.1 / Link 6</a>
	R2018 - Course Outcomes (CO)	<a href="#">1.1.1 / Link 7</a>
	R2022 - Course Outcomes (CO)	<a href="#">1.1.1 / Link 8</a>
B.E – Computer Science Engineering	Vision and Mission	<a href="#">1.1.1 / Link 9</a>
	Programme Educational Objectives (PEO)	<a href="#">1.1.1 / Link 10</a>
	Program Outcomes (PO)	<a href="#">1.1.1 / Link 11</a>
	Program Specific Outcomes (PSO)	<a href="#">1.1.1 / Link 12</a>
	R2018 - Curriculum and Syllabus	<a href="#">1.1.1 / Link 13</a>
	R2022 - Curriculum and Syllabus	<a href="#">1.1.1 / Link 14</a>
	R2018 - Course Outcomes (CO)	<a href="#">1.1.1 / Link 15</a>
	R2022 - Course Outcomes (CO)	<a href="#">1.1.1 / Link 16</a>
B.E - Electronics and Communication Engineering	Vision and Mission	<a href="#">1.1.1 / Link 17</a>
	Programme Educational Objectives (PEO)	<a href="#">1.1.1 / Link 18</a>
	Program Outcomes (PO)	<a href="#">1.1.1 / Link 19</a>
	Program Specific Outcomes (PSO)	<a href="#">1.1.1 / Link 20</a>
	R2018 - Curriculum and Syllabus	<a href="#">1.1.1 / Link 21</a>
	R2022 - Curriculum and Syllabus	<a href="#">1.1.1 / Link 22</a>
	R2018 - Course Outcomes (CO)	<a href="#">1.1.1 / Link 23</a>
	R2022 - Course Outcomes (CO)	<a href="#">1.1.1 / Link 24</a>

B.E - Electrical and Electronics Engineering	Vision and Mission	<a href="#">1.1.1 / Link 25</a>
	Programme Educational Objectives (PEO)	<a href="#">1.1.1 / Link 26</a>
	Program Outcomes (PO)	<a href="#">1.1.1 / Link 27</a>
	Program Specific Outcomes (PSO)	<a href="#">1.1.1 / Link 28</a>
	R2018 - Curriculum and Syllabus	<a href="#">1.1.1 / Link 29</a>
	R2022 - Curriculum and Syllabus	<a href="#">1.1.1 / Link 30</a>
	R2018 - Course Outcomes (CO)	<a href="#">1.1.1 / Link 31</a>
	R2022 - Course Outcomes (CO)	<a href="#">1.1.1 / Link 32</a>
B.E Mechanical Engineering	Vision and Mission	<a href="#">1.1.1 / Link 33</a>
	Programme Educational Objectives (PEO)	<a href="#">1.1.1 / Link 34</a>
	Program Outcomes (PO)	<a href="#">1.1.1 / Link 35</a>
	Program Specific Outcomes (PSO)	<a href="#">1.1.1 / Link 36</a>
	R2018 - Curriculum and Syllabus	<a href="#">1.1.1 / Link 37</a>
	R2022 - Curriculum and Syllabus	<a href="#">1.1.1 / Link 38</a>
	R2018 - Course Outcomes (CO)	<a href="#">1.1.1 / Link 39</a>
	R2022 - Course Outcomes (CO)	<a href="#">1.1.1 / Link 40</a>
B.E - Metallurgical Engineering	Vision and Mission	<a href="#">1.1.1 / Link 41</a>
	Programme Educational Objectives (PEO)	<a href="#">1.1.1 / Link 42</a>
		<a href="#">1.1.1 / Link 43</a>
	Program Outcomes (PO)	<a href="#">1.1.1 / Link 44</a>
		<a href="#">1.1.1 / Link 45</a>
	Program Specific Outcomes (PSO)	<a href="#">1.1.1 / Link 46</a>
		<a href="#">1.1.1 / Link 47</a>
	R2018 - Curriculum and Syllabus	<a href="#">1.1.1 / Link 48</a>
	R2022 - Curriculum and Syllabus	<a href="#">1.1.1 / Link 49</a>
R2018 - Course Outcomes (CO)	<a href="#">1.1.1 / Link 50</a>	
R2022 - Course Outcomes (CO)	<a href="#">1.1.1 / Link 51</a>	
M.E – Structural Engineering	Vision and Mission	<a href="#">1.1.1 / Link 52</a>
	Programme Educational Objectives (PEO)	<a href="#">1.1.1 / Link 53</a>
	Program Outcomes (PO)	<a href="#">1.1.1 / Link 54</a>
	Program Specific Outcomes (PSO)	<a href="#">1.1.1 / Link 55</a>
	R2018 - Curriculum and Syllabus	<a href="#">1.1.1 / Link 56</a>

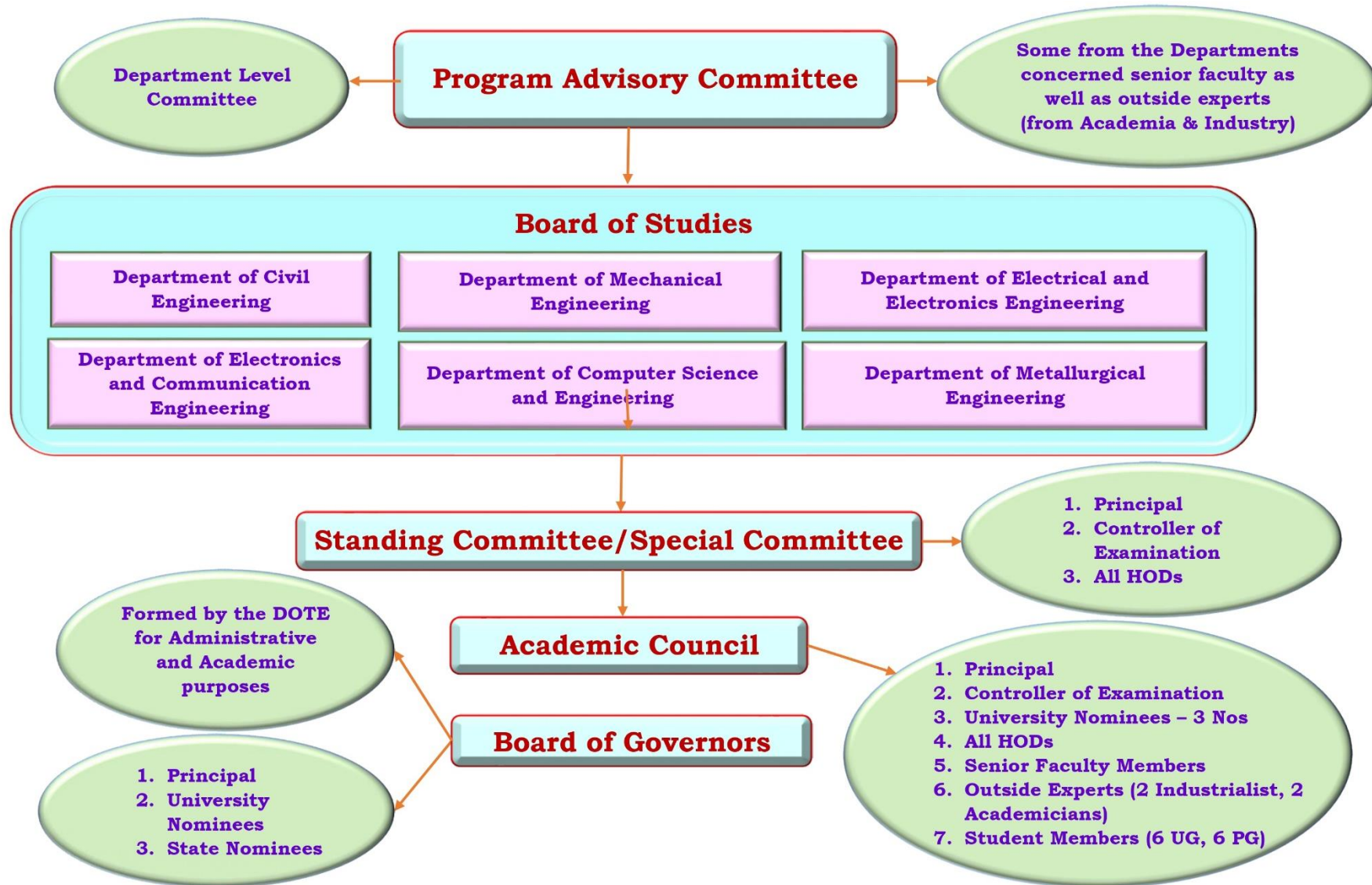
	R2022 - Curriculum and Syllabus	<a href="#">1.1.1 / Link 57</a>
	R2018 - Course Outcomes (CO)	<a href="#">1.1.1 / Link 58</a>
	R2022 - Course Outcomes (CO)	<a href="#">1.1.1 / Link 59</a>
M.E – Computer Aided Design	Vision and Mission	<a href="#">1.1.1 / Link 60</a>
	Programme Educational Objectives (PEO)	<a href="#">1.1.1 / Link 61</a>
	Program Outcomes (PO)	<a href="#">1.1.1 / Link 62</a>
	Program Specific Outcomes (PSO)	<a href="#">1.1.1 / Link 63</a>
	R2018 - Curriculum and Syllabus	<a href="#">1.1.1 / Link 64</a>
	R2022 - Curriculum and Syllabus	<a href="#">1.1.1 / Link 65</a>
	R2018 - Course Outcomes (CO)	<a href="#">1.1.1 / Link 66</a>
	R2022 - Course Outcomes (CO)	<a href="#">1.1.1 / Link 67</a>
M.E - Thermal Engineering	Vision and Mission	<a href="#">1.1.1 / Link 68</a>
	Programme Educational Objectives (PEO)	<a href="#">1.1.1 / Link 69</a>
	Program Outcomes (PO)	<a href="#">1.1.1 / Link 70</a>
	Program Specific Outcomes (PSO)	<a href="#">1.1.1 / Link 71</a>
	R2018 - Curriculum and Syllabus	<a href="#">1.1.1 / Link 72</a>
	R2022 - Curriculum and Syllabus	<a href="#">1.1.1 / Link 73</a>
	R2018 - Course Outcomes (CO)	<a href="#">1.1.1 / Link 74</a>
	R2022 - Course Outcomes (CO)	<a href="#">1.1.1 / Link 75</a>
M.E – Power Electronics and drives	Vision and Mission	<a href="#">1.1.1 / Link 76</a>
	Programme Educational Objectives (PEO)	<a href="#">1.1.1 / Link 77</a>
	Program Outcomes (PO)	<a href="#">1.1.1 / Link 78</a>
	Program Specific Outcomes (PSO)	<a href="#">1.1.1 / Link 79</a>
	R2018 - Curriculum and Syllabus	<a href="#">1.1.1 / Link 80</a>
	R2022 - Curriculum and Syllabus	<a href="#">1.1.1 / Link 81</a>
	R2018 - Course Outcomes (CO)	<a href="#">1.1.1 / Link 82</a>
	R2022 - Course Outcomes (CO)	<a href="#">1.1.1 / Link 83</a>
M.E – Welding Technology	Vision and Mission	<a href="#">1.1.1 / Link 84</a>
	Programme Educational Objectives (PEO)	<a href="#">1.1.1 / Link 85</a>
		<a href="#">1.1.1 / Link 86</a>
	Program Outcomes (PO)	<a href="#">1.1.1 / Link 87</a>

		<a href="#">1.1.1 / Link 88</a>
	Program Specific Outcomes (PSO)	<a href="#">1.1.1 / Link 89</a>
		<a href="#">1.1.1 / Link 90</a>
	R2018 - Curriculum and Syllabus	<a href="#">1.1.1 / Link 91</a>
	R2022 - Curriculum and Syllabus	<a href="#">1.1.1 / Link 92</a>
	R2018 - Course Outcomes (CO)	<a href="#">1.1.1 / Link 93</a>
M.E – Communication systems	Vision and Mission	<a href="#">1.1.1 / Link 95</a>
	Programme Educational Objectives (PEO)	<a href="#">1.1.1 / Link 96</a>
	Program Outcomes (PO)	<a href="#">1.1.1 / Link 97</a>
	Program Specific Outcomes (PSO)	<a href="#">1.1.1 / Link 98</a>
	R2018 - Curriculum and Syllabus	<a href="#">1.1.1 / Link 99</a>
	R2022 - Curriculum and Syllabus	<a href="#">1.1.1 / Link 100</a>
	R2018 - Course Outcomes (CO)	<a href="#">1.1.1 / Link 101</a>
	R2022 - Course Outcomes (CO)	<a href="#">1.1.1 / Link 102</a>

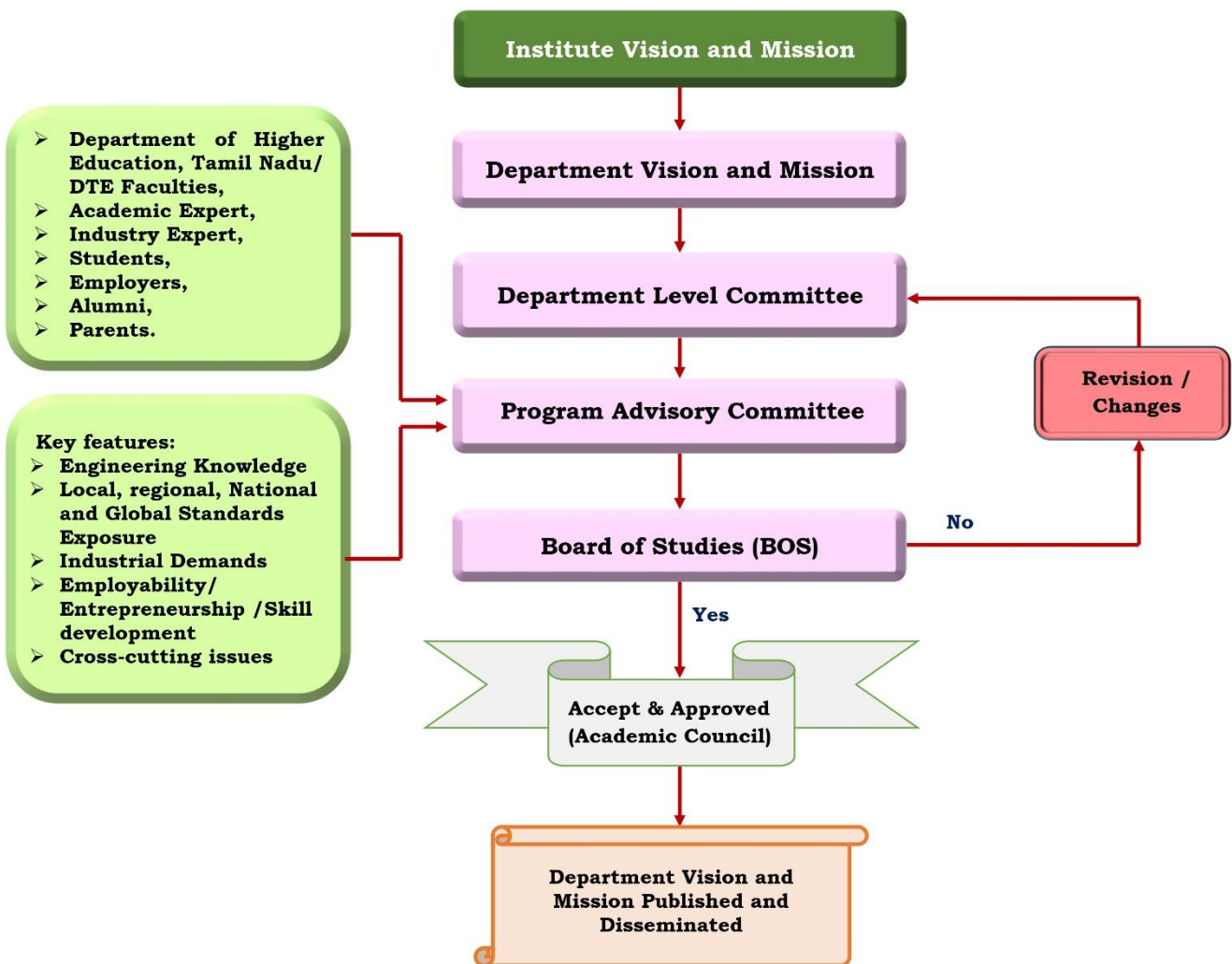
  
**PRINCIPAL**  
 GOVT. COLLEGE OF ENGG.,  
 SALEM-636 011

# Government College of Engineering, Salem – 11

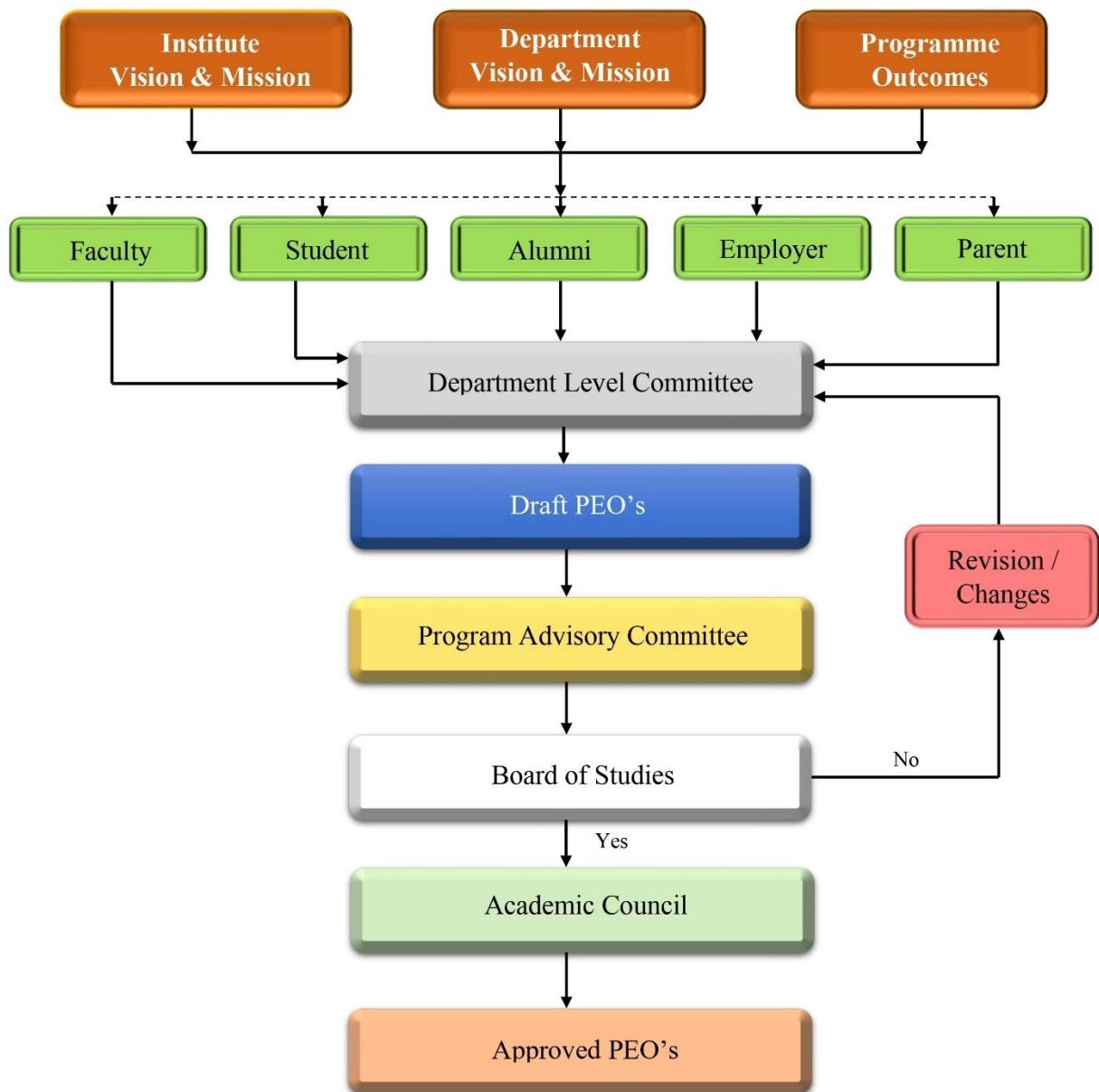
## Structure of Academic and Administrative Bodies for Curriculum Development



## Process for designing Vision and Mission

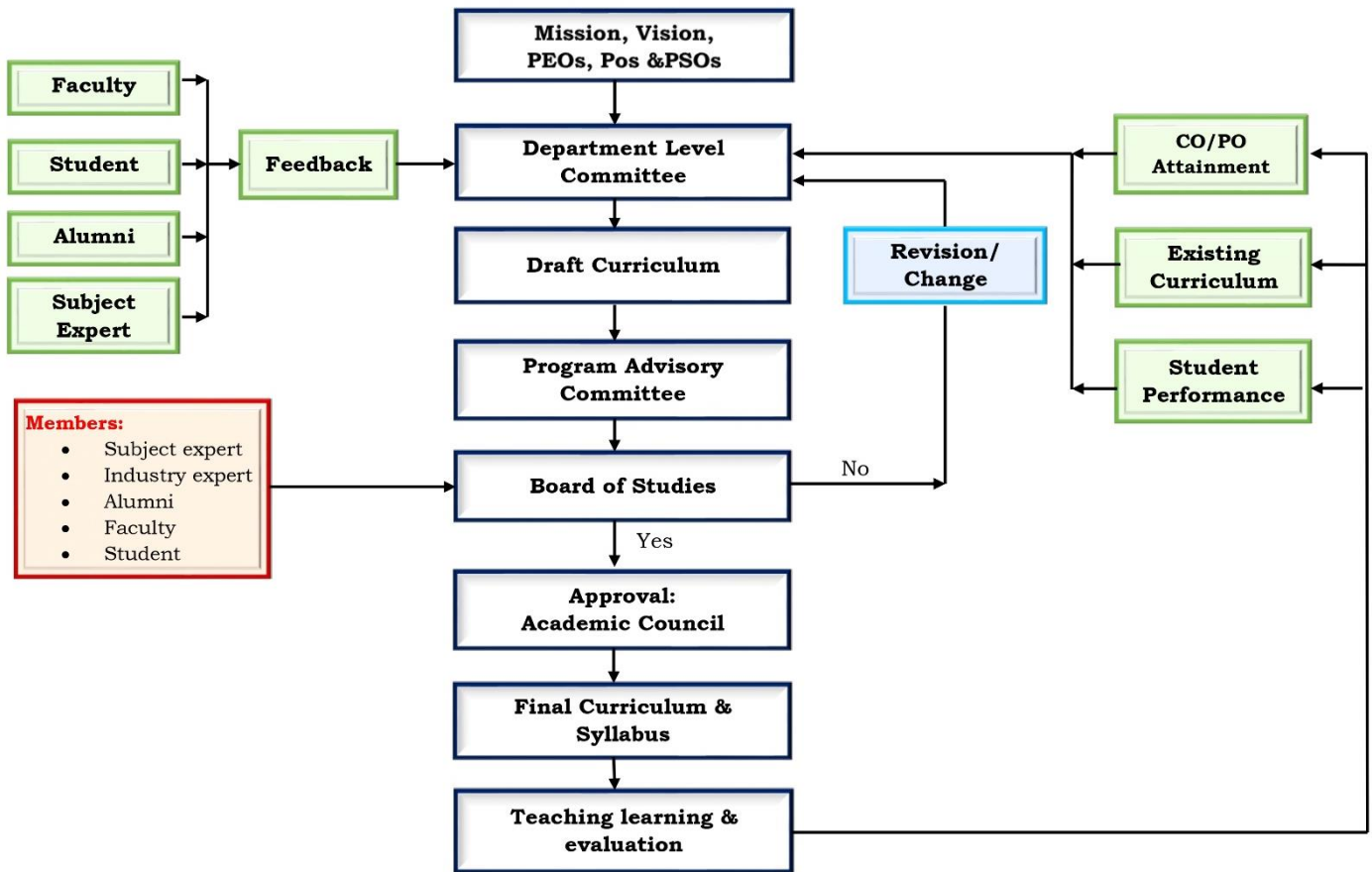


## Process for designing Program Educational Objectives (PEOs)



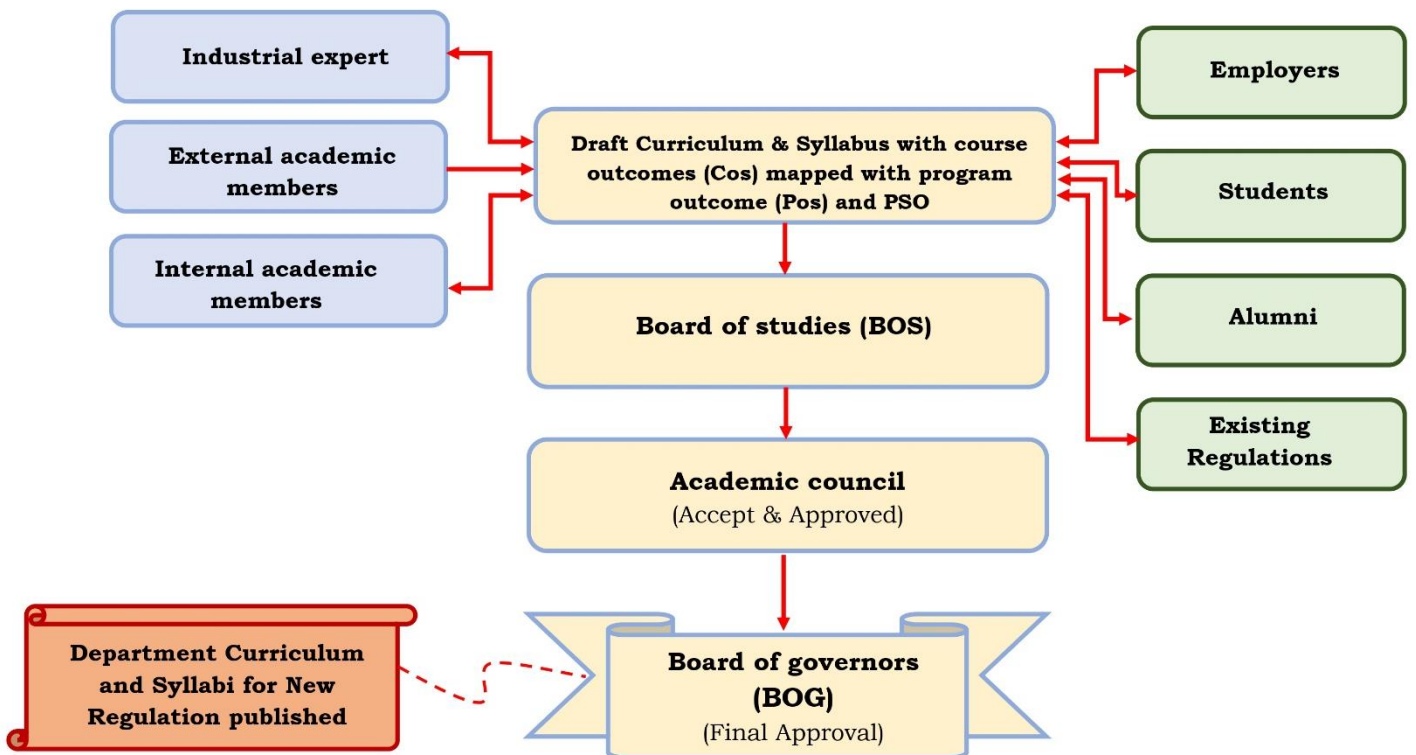


## Process for designing Program Curriculum

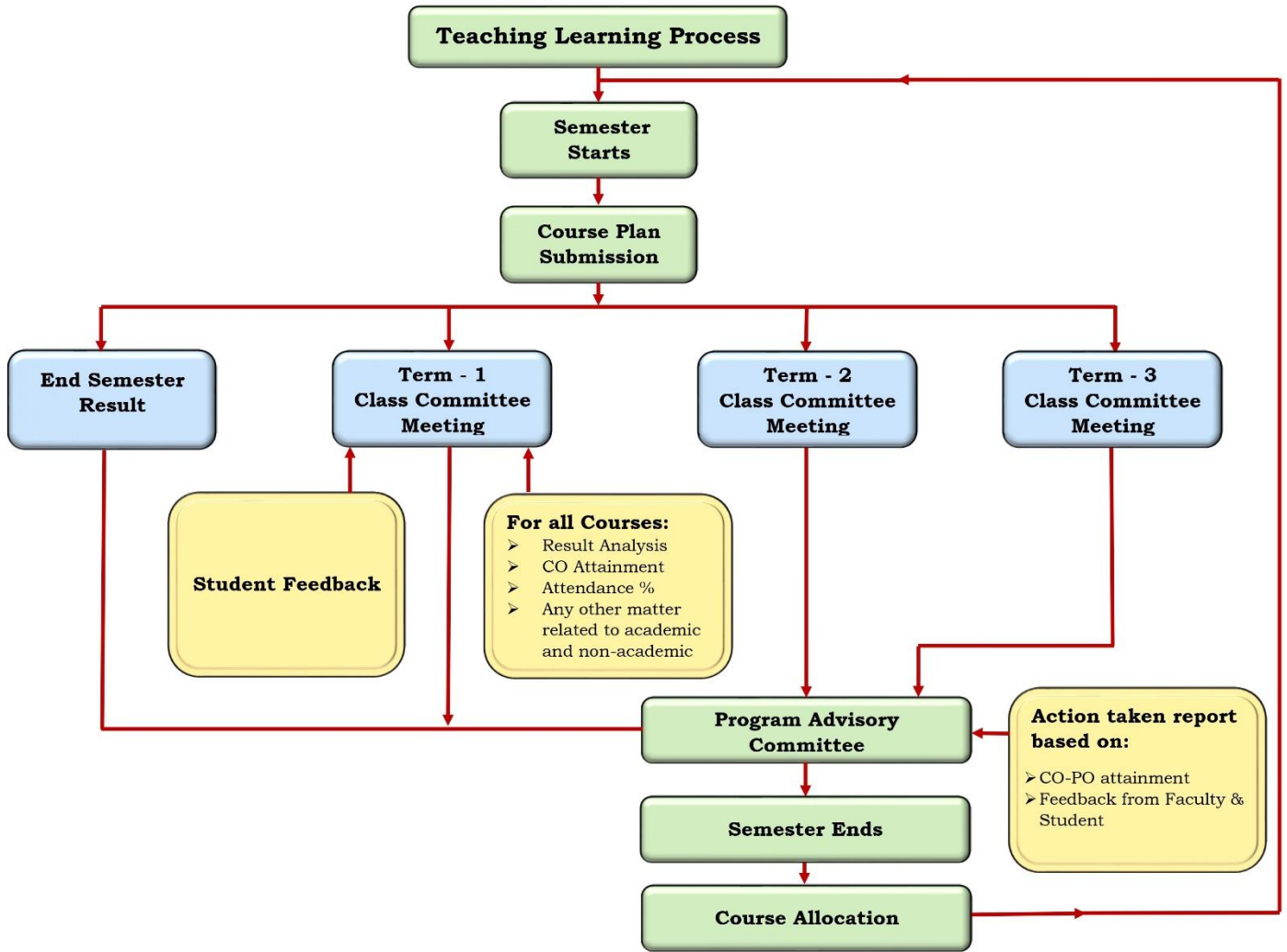




## Process for Defining of Curriculum and Syllabi for New Regulation

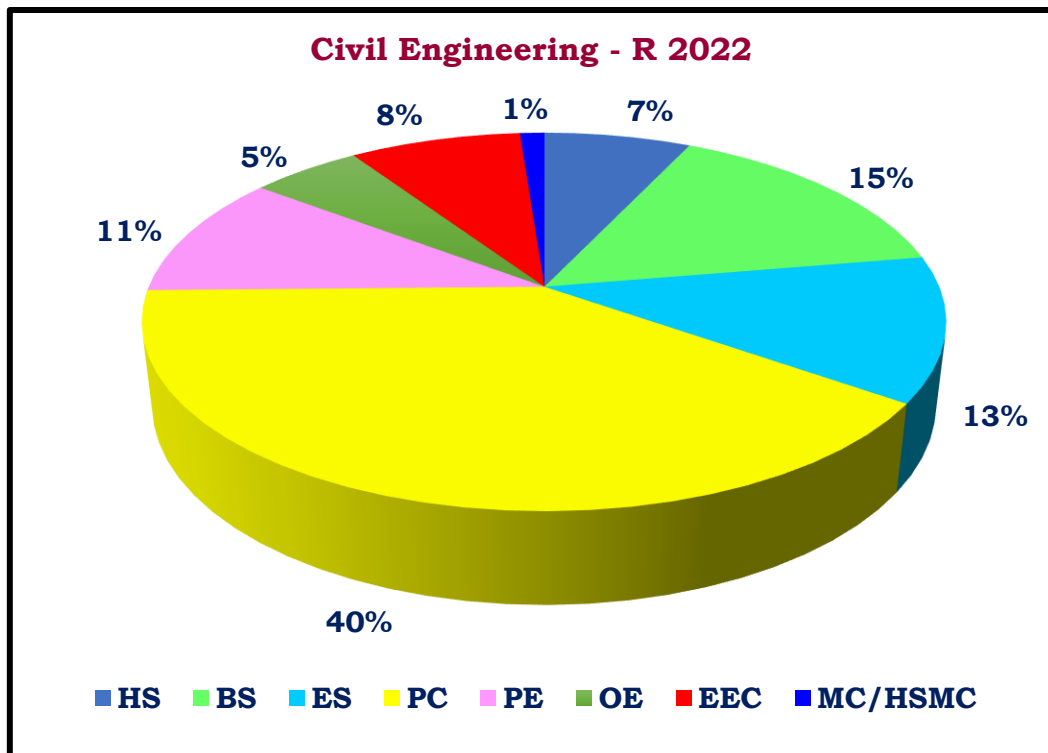
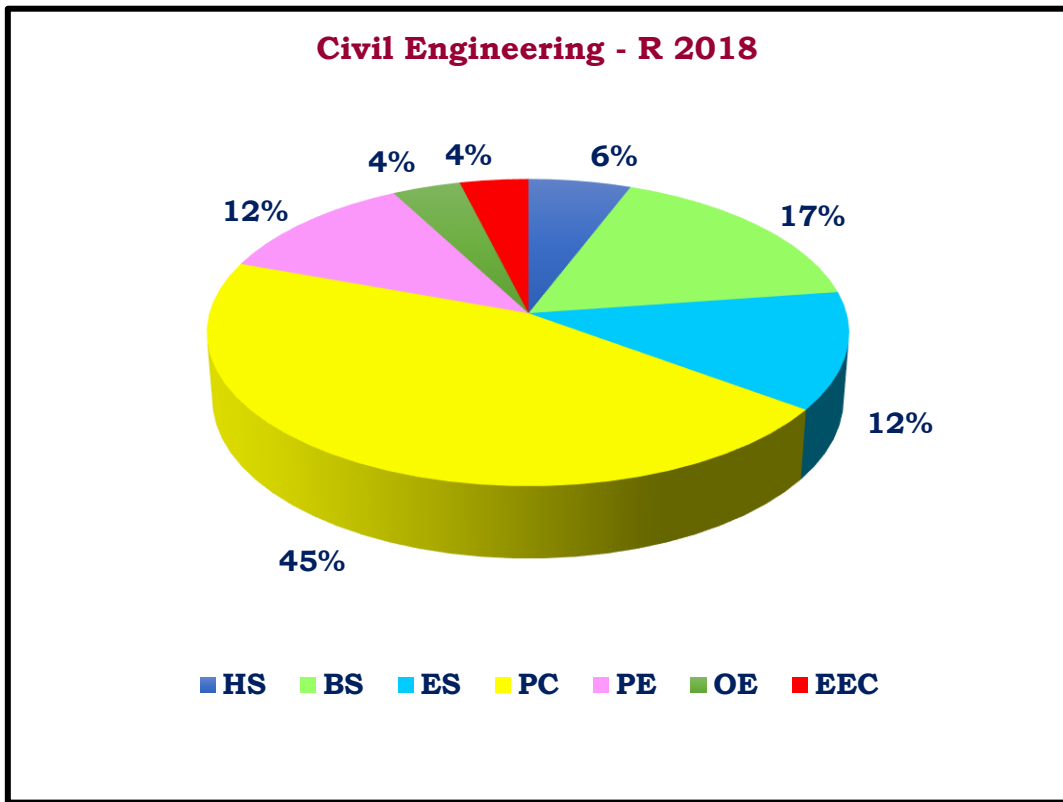


## Teaching Learning Process



## R2018 and R2022 – Curriculum Structure- Category Wise Credit Distribution

### Department of Civil Engineering



### R2018 Curriculum Structure- Category Wise Credit Distribution

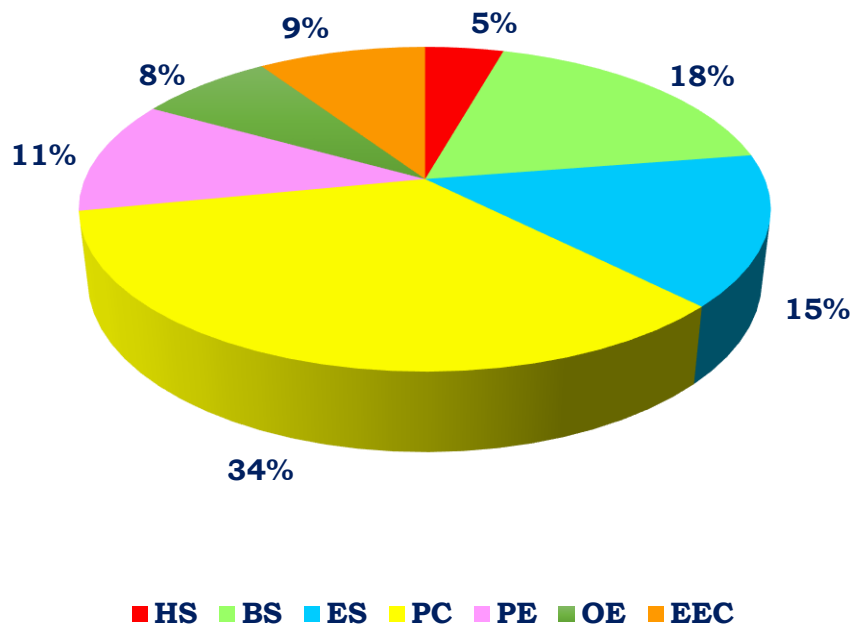
S.No	Category	Credits Per Semester								Total Credits
		I	II	III	IV	V	VI	VII	VIII	
1	Humanities and Social Science (HS)	1	3	3			2			9
2	Basic Science (BS)	11	8	7						26
3	Engineering Science (ES)	8	8	3						19
4	Program Core (PC)			10	22	22	13		3	70
5	Program Electives (PE)						6	6	6	18
6	Open Electives (OE)							6		6
7	Employment Enhancement Course (EEC)							6		6
	<b>Total</b>	<b>20</b>	<b>19</b>	<b>23</b>	<b>22</b>	<b>22</b>	<b>21</b>	<b>18</b>	<b>9</b>	<b>154</b>

### R2022 Curriculum Structure- Category Wise Credit Distribution

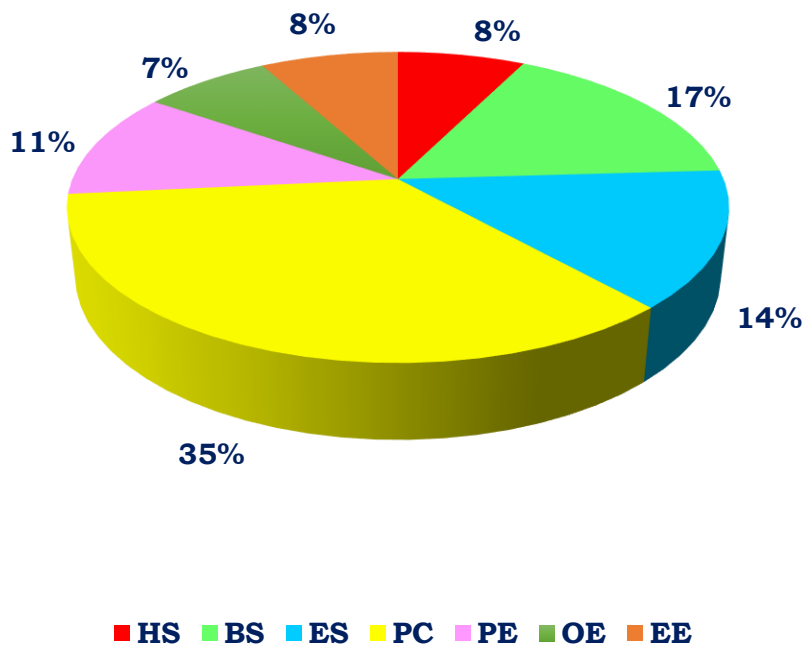
S.No	Category	Credits Per Semester								Total Credits
		I	II	III	IV	V	VI	VII	VIII	
1	Humanities and Social Sciences (HS)	1	6	3				2		12
2	Engineering Sciences (ES)	8.5	9.5	3						21
3	Basic Sciences (BS)	15	7	4						26
4	Professional Core (PC)			13	23	23		9		68
5	Professional Elective (PE)						9	6	3	18
6	Open Electives (OE)						9			09
7	Employment Enhancement Courses (EE)		1	1	1	1	3		7	14
8	Mandatory Course (One Credit) (MC/HSMC)	1	1							02
	<b>Total</b>	<b>25.5</b>	<b>24.5</b>	<b>24</b>	<b>24</b>	<b>24</b>	<b>21</b>	<b>17</b>	<b>10</b>	<b>170</b>

**Department of Computer Science and Engineering**

**Computer Science and Engineering - R 2018**



**Computer Science and Engineering - R 2022**



### R2018 Curriculum Structure- Category Wise Credit Distribution

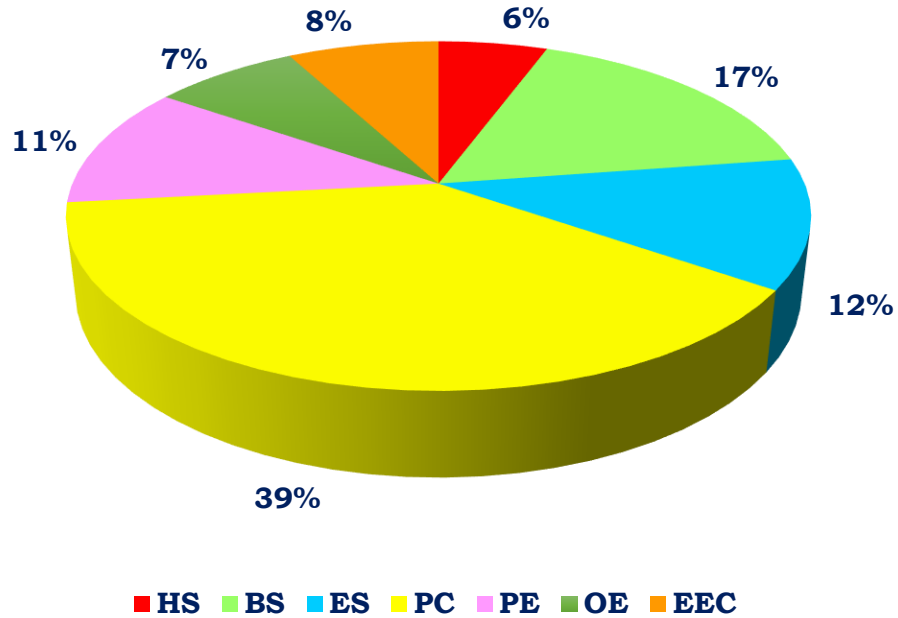
S.No	Category	Credits Per Semester								Total Credits
		I	II	III	IV	V	VI	VII	VIII	
1	Humanities and Social Science (HS)	3	1			3				<b>7</b>
2	Basic Science (BS)	8	11	4	4	2				<b>29</b>
3	Engineering Science (ES)	8	8	3	5					<b>24</b>
4	Program Core (PC)			13	14	13	10	5		<b>55</b>
5	Program Electives (PE)						6	6	6	<b>18</b>
6	Open Electives (OE)					3	3	6		<b>12</b>
7	Employment Enhancement Course (EEC)						3	6	6	<b>15</b>
	<b>Total</b>	<b>19</b>	<b>20</b>	<b>20</b>	<b>23</b>	<b>21</b>	<b>22</b>	<b>23</b>	<b>12</b>	<b>160</b>

### R2022 Curriculum Structure- Category Wise Credit Distribution

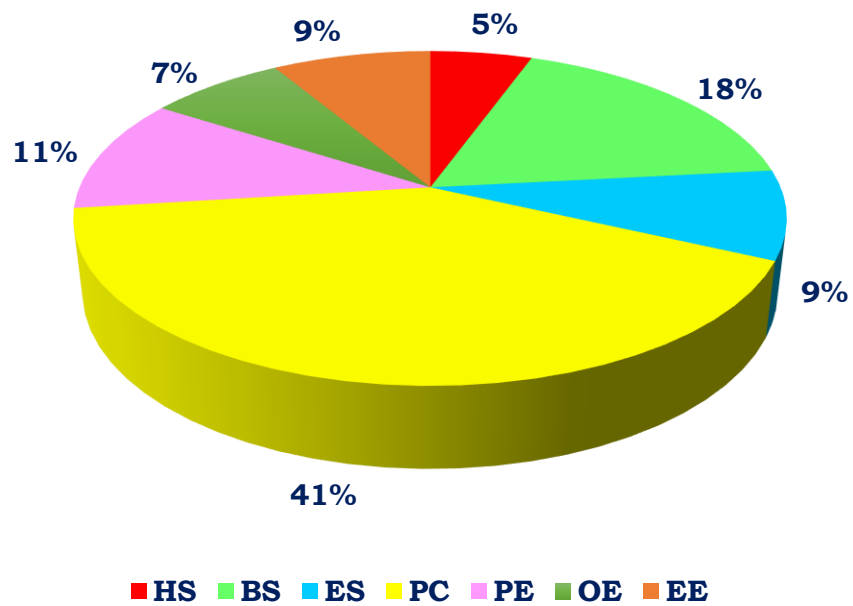
S.No	Category	Credits Per Semester								Total Credits
		I	II	III	IV	V	VI	VII	VIII	
1	Humanities and Social Sciences (HS)	3	4			2		3		<b>12</b>
2	Engineering Sciences (ES)	6.5	11.5		5					<b>23</b>
3	Basic Sciences (BS)	12	7	4	4					<b>27</b>
4	Professional Core (PC)			16	11	16		14		<b>57</b>
5	Professional Elective (PE)						9	3	6	<b>18</b>
6	Open Electives (OE)					3	9			<b>12</b>
7	Employment Enhancement Courses (EE)		1	1	1	1	3		6	<b>13</b>
8	Mandatory Course (One Credit) (MC/HSMC)									
	<b>Total</b>	<b>21.5</b>	<b>23.5</b>	<b>21</b>	<b>21</b>	<b>22</b>	<b>21</b>	<b>20</b>	<b>12</b>	<b>162</b>

## Department of Electronics and Communication Engineering

### Electronics and Communication Engineering - R 2018



### Electronics and Communication Engineering - R 2022





### R2018 Curriculum Structure- Category Wise Credit Distribution

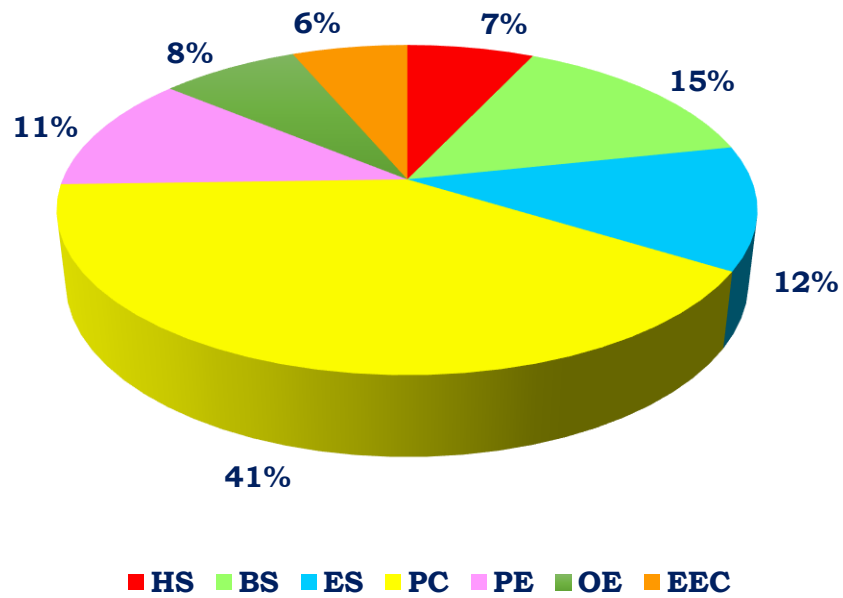
S.No	Category	Credits Per Semester								Total Credits
		I	II	III	IV	V	VI	VII	VIII	
1	Humanities and Social Science (HS)	3	1				2	3		9
2	Basic Science (BS)	8	11	4	4					27
3	Engineering Science (ES)	8	8	3						19
4	Program Core (PC)			15	18	15	7.5	6		61.5
5	Program Electives (PE)						3	6	9	18
6	Open Electives (OE)					3	6	3		12
7	Employment Enhancement Course (EEC)						2.5		10	12.5
	<b>Total</b>	<b>19</b>	<b>20</b>	<b>22</b>	<b>22</b>	<b>18</b>	<b>21</b>	<b>18</b>	<b>19</b>	<b>159</b>

### R2022 Curriculum Structure- Category Wise Credit Distribution

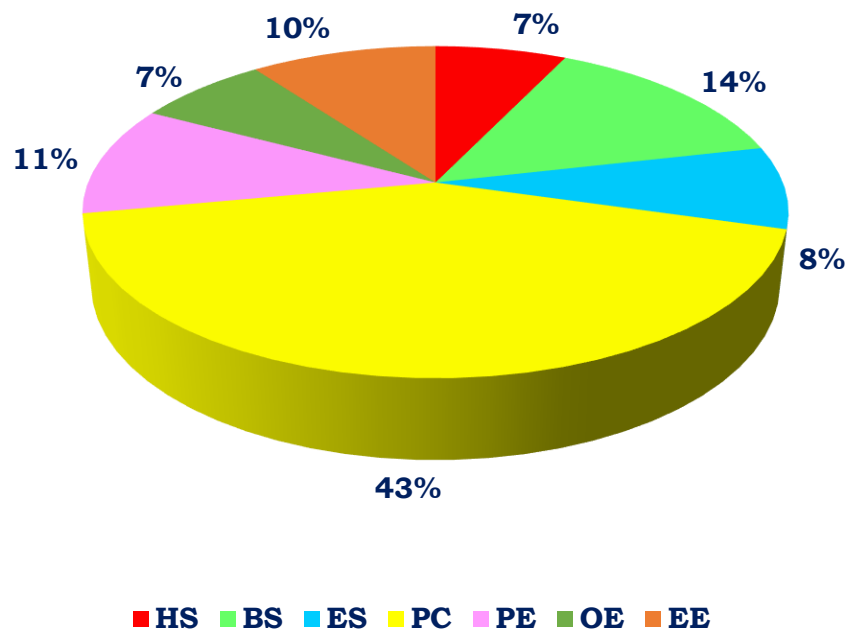
S.No	Category	Credits Per Semester								Total Credits
		I	II	III	IV	V	VI	VII	VIII	
1	Humanities and Social Sciences (HS)	3	4		2					9
2	Engineering Sciences (ES)	6.5	7.5							14
3	Basic Sciences (BS)	11	10	4	4					29
4	Professional Core (PC)			19	19	16		13		67
5	Professional Elective (PE)						12		6	18
6	Open Electives (OE)					3	6	3		12
7	Employment Enhancement Courses (EE)		1	1	1	1	3		7	14
8	Mandatory Course (One Credit) (MC/HSMC)									
	<b>Total</b>	<b>20.5</b>	<b>22.5</b>	<b>24</b>	<b>26</b>	<b>20</b>	<b>21</b>	<b>16</b>	<b>13</b>	<b>163</b>

## Department of Electrical and Electronics Engineering

**Electrical and Electronics Engineering - R 2018**



**Electrical and Electronics Engineering - R 2022**



### R2018 Curriculum Structure- Category Wise Credit Distribution

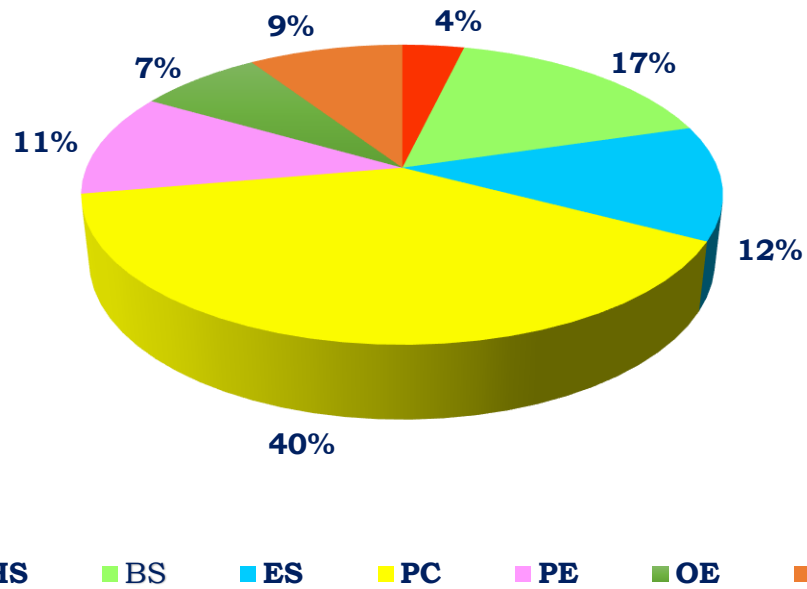
S.No	Category	Credits Per Semester								Total Credits
		I	II	III	IV	V	VI	VII	VIII	
1	Humanities and Social Science (HS)	3	1				4	3		11
2	Basic Science (BS)	8	11	4						23
3	Engineering Science (ES)	8	8		3					19
4	Program Core (PC)			18	16.5	17.5	6	6		64
5	Program Electives (PE)					3	6	3	6	18
6	Open Electives (OE)					3	3	6		12
7	Employment Enhancement Course (EEC)						2		8	10
	<b>Total</b>	<b>19</b>	<b>20</b>	<b>22</b>	<b>19.5</b>	<b>23.5</b>	<b>21</b>	<b>18</b>	<b>14</b>	<b>157</b>

### R2022 Curriculum Structure- Category Wise Credit Distribution

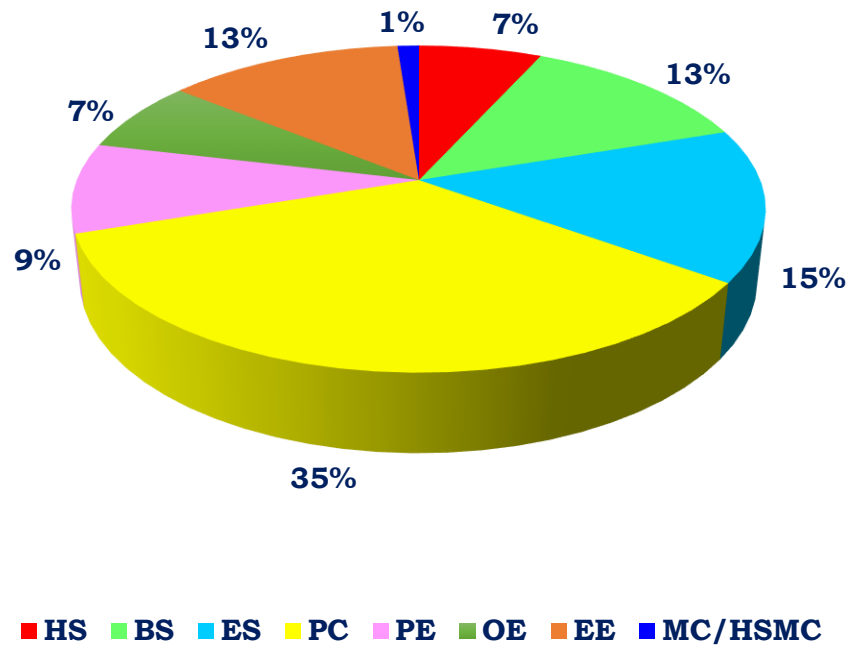
S.No	Category	Credits per Semester								Total Credits
		I	II	III	IV	V	VI	VII	VIII	
1	Humanities and Social Science (HS)	3	4		2			3		12
2	Basic Sciences (BS)	7	13	4						24
3	Engineering Sciences (ES)	10.5	3							13.5
4	Program Core (PC)			19	18	22.5		12		71.5
5	Program Electives (PE)						12		6	18
6	Open Electives (OE)						6	6		12
7	Employment Enhancement Course (EE)		1	1	1	1	3		10	17
8	Mandatory / Management / Non-Credit Course (MC/HSMC)									
	<b>Total</b>	<b>20.5</b>	<b>21</b>	<b>24</b>	<b>21</b>	<b>23.5</b>	<b>21</b>	<b>21</b>	<b>16</b>	<b>168</b>

## Department of Mechanical Engineering

### Mechanical Engineering - R 2018



### Mechanical Engineering - R 2022



### R2018 Curriculum Structure- Category Wise Credit Distribution

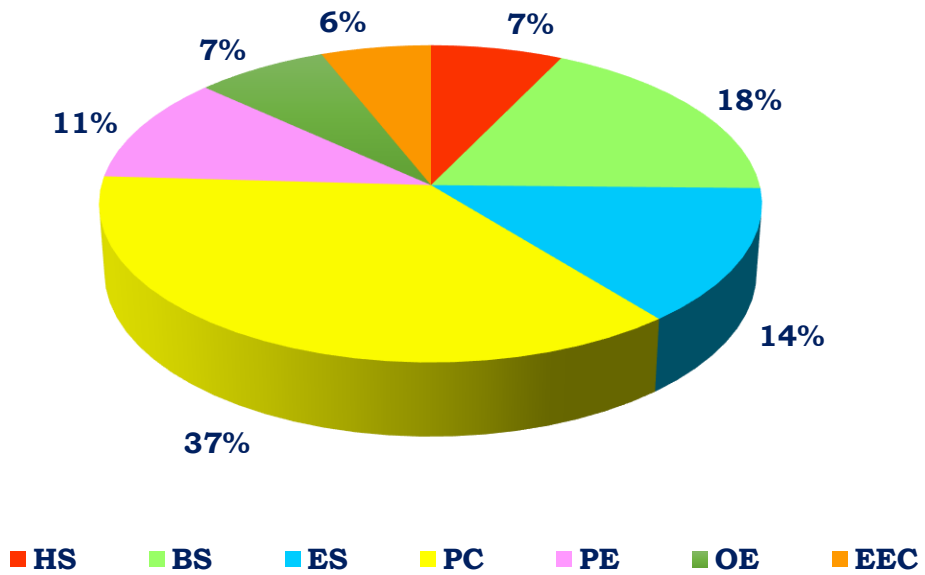
S.No	Category	Credits Per Semester								Total Credits
		I	II	III	IV	V	VI	VII	VIII	
1	Humanities and Social Science (HS)	1	3			2				<b>6</b>
2	Basic Science (BS)	11	8	8						<b>27</b>
3	Engineering Science (ES)	8	8	4						<b>20</b>
4	Program Core (PC)			12	20	16	11.5	4.5		<b>64</b>
5	Program Electives (PE)						6	6	6	<b>18</b>
6	Open Electives (OE)					3	3	3	3	<b>12</b>
7	Employment Enhancement Course (EEC)									
8	Project (PRO)						1	4	10	<b>15</b>
	<b>Total</b>	<b>20</b>	<b>19</b>	<b>24</b>	<b>20</b>	<b>21</b>	<b>21.5</b>	<b>17.5</b>	<b>19</b>	<b>162</b>

### R2022 Curriculum Structure- Category Wise Credit Distribution

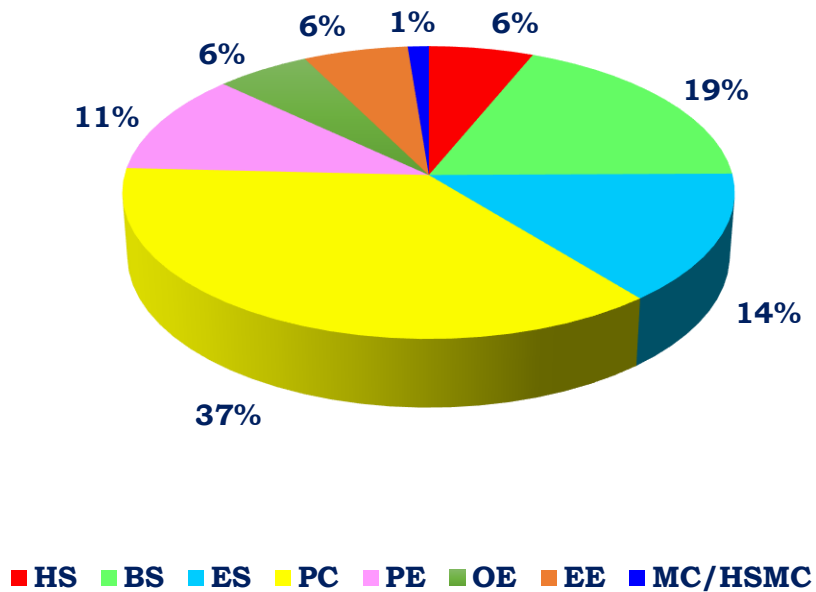
S.No	Category	Credits Per Semester								Total Credits
		I	II	III	IV	V	VI	VII	VIII	
1	Humanities and Social Sciences (HS)	1	6			1.5		3		<b>11.5</b>
2	Engineering Science (ES)	11.5	6.5	4.5	3					<b>25.5</b>
3	Basic Science (BS)	11	8	3						<b>22</b>
4	Professional Core (PC)			12.5	17	19		10.5		<b>59</b>
5	Professional Electives (PE)						9	3	3	<b>15</b>
6	Open Electives (OE)						9		3	<b>12</b>
7	Employment Enhancement Courses (EE)		1	1	1	2	3	4	10	<b>22</b>
8	Mandatory Course (One Credit) (MC/HSMC)	1	1							<b>2</b>
	<b>Total</b>	<b>24.5</b>	<b>22.5</b>	<b>21</b>	<b>21</b>	<b>22.5</b>	<b>21</b>	<b>20.5</b>	<b>16</b>	<b>169</b>

## Department of Metallurgical Engineering

### Metallurgical Engineering - R 2018



### Metallurgical Engineering - R 2022



### R2018 Curriculum Structure- Category Wise Credit Distribution

S.No	Category	Credits Per Semester								Total Credits
		I	II	III	IV	V	VI	VII	VIII	
1	Humanities and Social Science (HS)	3	1				2	3	3	12
2	Basic Science (BS)	8	11	4	7					30
3	Engineering Science (ES)	8	8	4		3				23
4	Program Core (PC)			20	11	11	14	5		61
5	Program Electives (PE)					6	3	6	3	18
6	Open Electives (OE)				3		3	6		12
7	Employment Enhancement Course (EEC)								10	10
	<b>Total</b>	<b>19</b>	<b>20</b>	<b>28</b>	<b>21</b>	<b>20</b>	<b>22</b>	<b>20</b>	<b>16</b>	<b>166</b>

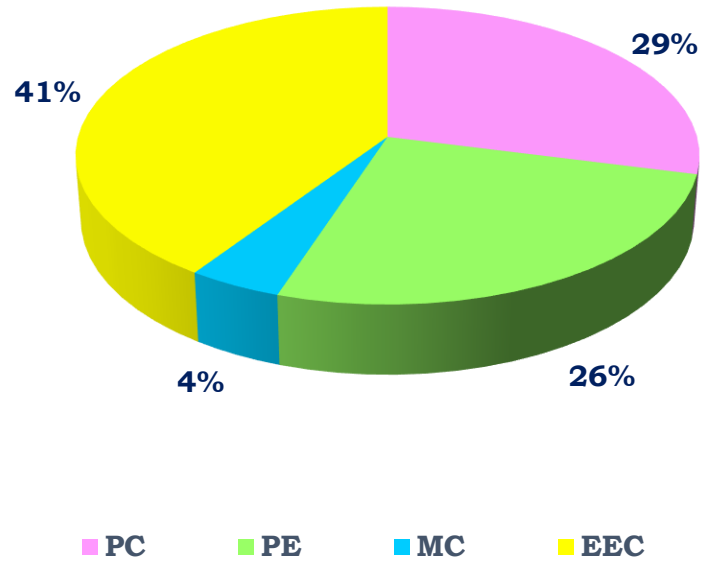
### R2022 Curriculum Structure- Category Wise Credit Distribution

S.No	Category	Credits Per Semester								Total Credits
		I	II	III	IV	V	VI	VII	VIII	
1	Humanities and Social Sciences (HS)	3	1	-	-	-	-	3	3	10
2	Engineering Science (ES)	8	8	4	-	3	-	-	-	23
3	Basic Science (BS)	8	11	4	7	-	-	-	-	30
4	Professional Core (PC)	-	-	16	12	12	14	5	-	59
5	Professional Electives (PE)	-	-	-	-	6	3	6	3	18
6	Open Electives (OE)	-	-	-	3	-	3	3	-	9
7	Employment Enhancement Courses (EE)	-	-	-	-	-	-	-	10	10
8	Mandatory Course (One Credit) (MC/HSMC)	1	1							2
9	Proto Sem		1	1	1	1	21			25
	<b>Total</b>	<b>20</b>	<b>21</b>	<b>24</b>	<b>22</b>	<b>21</b>	<b>20</b>	<b>17</b>	<b>16</b>	<b>161</b>

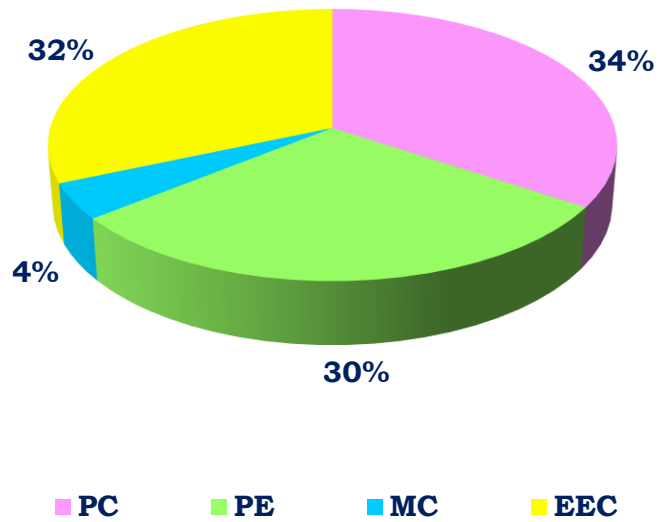


## M.E – Thermal Engineering

### Thermal Engineering - R 2018



### Thermal Engineering - R 2022



### R2018 Curriculum Structure- Category Wise Credit Distribution

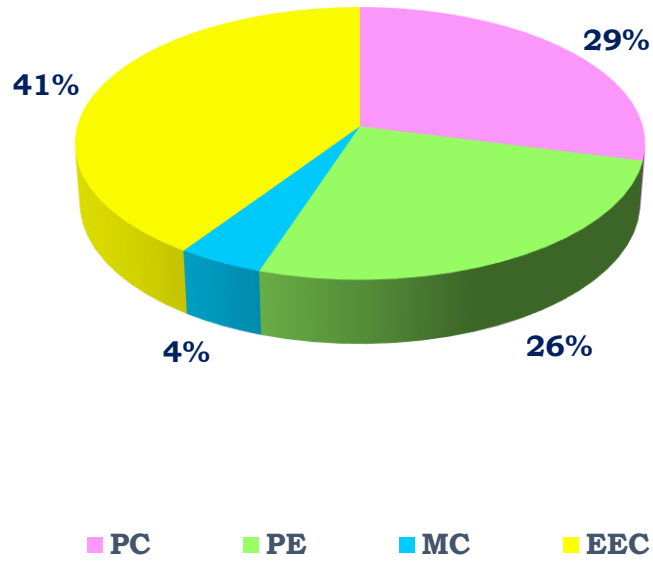
S.No	Category	Credits Per Semester				Total Credits
		I	II	III	IV	
1	Professional Core (PC)	10	10			<b>20</b>
2	Professional Electives (PE)	6	6	6		<b>18</b>
3	Mandatory Courses (MC)	3				<b>3</b>
4	Employment Enhancement Courses (EEC)		2	10	16	<b>28</b>
5	Audit Courses (AU)					
	<b>Total</b>	<b>19</b>	<b>18</b>	<b>16</b>	<b>16</b>	<b>69</b>

### R2022 Curriculum Structure- Category Wise Credit Distribution

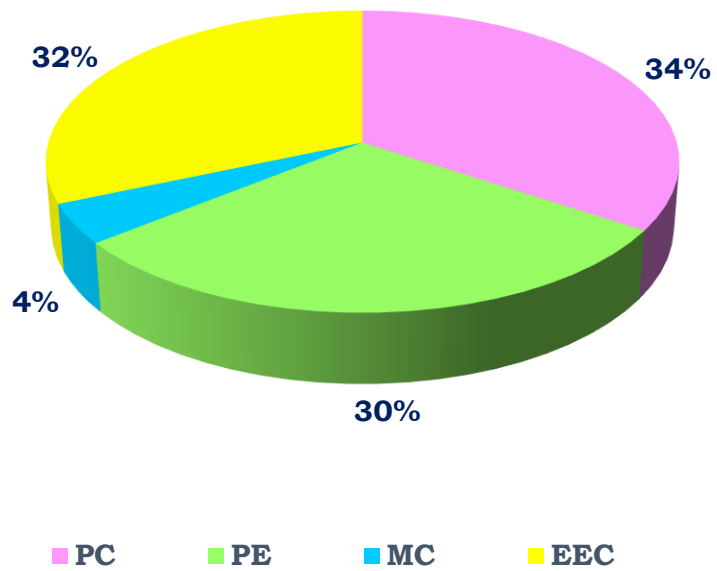
S.No	Category	Credits Per Semester				Total Credits
		I	II	III	IV	
1	Professional Core (PC)	11	13			<b>24</b>
2	Professional Electives (PE)	6	6	9		<b>21</b>
3	Mandatory Courses (MC)	3				<b>3</b>
4	Employment Enhancement Courses (EEC)	1	1	6	14	<b>22</b>
5	Audit Courses (AU)					
	<b>Total</b>	<b>21</b>	<b>20</b>	<b>15</b>	<b>14</b>	<b>70</b>

## M.E – Computer Aided Design

### Computer Aided Design - R 2018



### Computer Aided Design - R 2022



### R2018 Curriculum Structure- Category Wise Credit Distribution

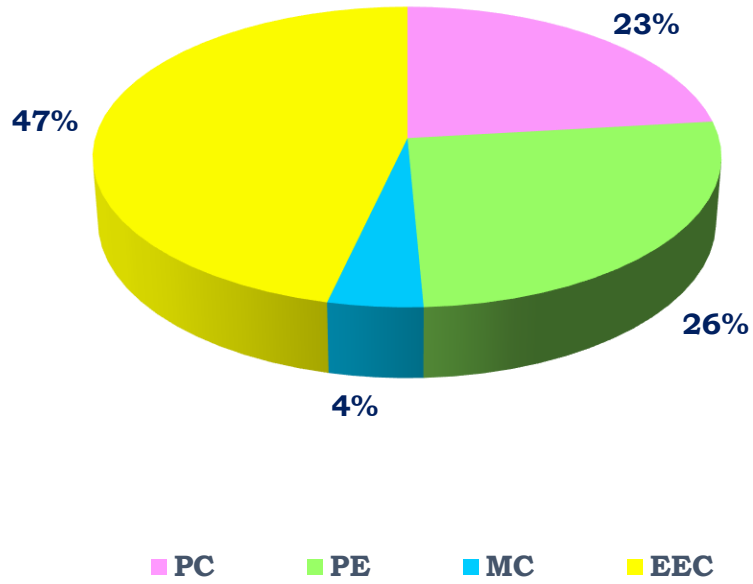
S.No	Category	Credits Per Semester				Total Credits
		I	II	III	IV	
1	Professional Core (PC)	10	10			<b>20</b>
2	Professional Electives (PE)	6	6	6		<b>18</b>
3	Mandatory Courses (MC)	3				<b>3</b>
4	Employment Enhancement Courses (EEC)		2	10	16	<b>28</b>
5	Audit Courses (AU)					
	<b>Total</b>	<b>19</b>	<b>18</b>	<b>16</b>	<b>16</b>	<b>69</b>

### R2022 Curriculum Structure- Category Wise Credit Distribution

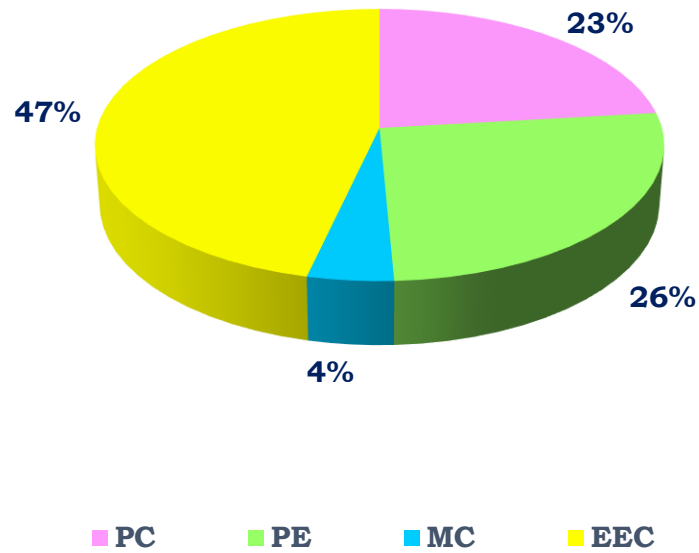
S.No	Category	Credits Per Semester				Total Credits
		I	II	III	IV	
1	Professional Core (PC)	11	13			<b>24</b>
2	Professional Electives (PE)	6	6	9		<b>21</b>
3	Mandatory Courses (MC)	3				<b>3</b>
4	Employment Enhancement Courses (EEC)	1	1	6	14	<b>22</b>
5	Audit Courses (AU)					
	<b>Total</b>	<b>21</b>	<b>20</b>	<b>15</b>	<b>14</b>	<b>70</b>

## M.E – Structural Engineering

### Structural Engineering - R 2018



### Structural Engineering - R 2022



### R2018 Curriculum Structure- Category Wise Credit Distribution

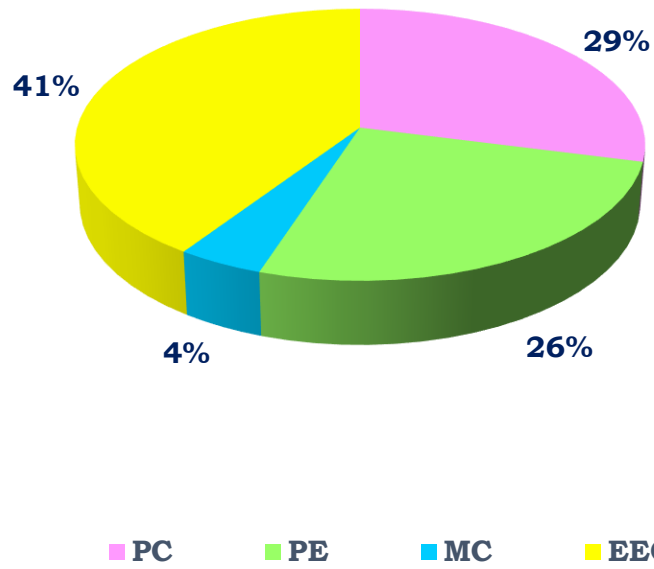
S.No	Category	Credits Per Semester				Total Credits
		I	II	III	IV	
1	Professional Core (PC)	8	8			<b>16</b>
2	Professional Electives (PE)	6	6	6		<b>18</b>
3	Mandatory Courses (MC)	3				<b>3</b>
4	Employment Enhancement Courses (EEC)	2	4	10	16	<b>32</b>
5	Audit Courses (AU)					
	<b>Total</b>	<b>19</b>	<b>18</b>	<b>16</b>	<b>16</b>	<b>69</b>

### R2022 Curriculum Structure- Category Wise Credit Distribution

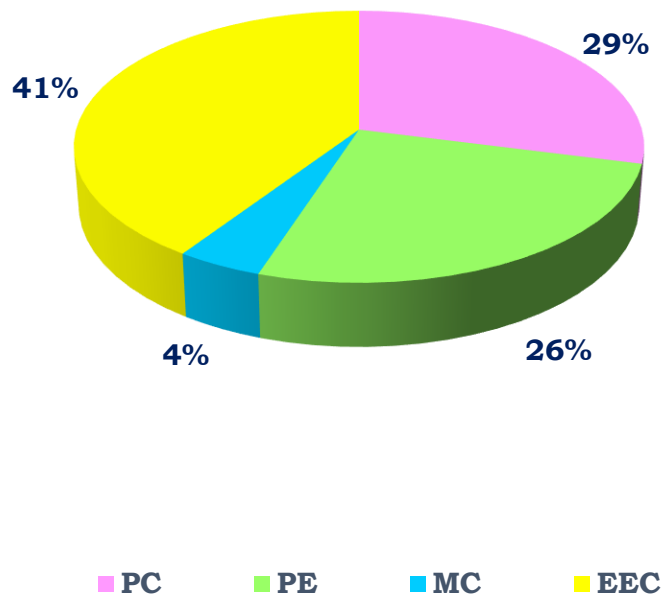
S.No	Category	Credits Per Semester				Total Credits
		I	II	III	IV	
1	Professional Core (PC)	8	8			<b>16</b>
2	Professional Electives (PE)	6	6	6		<b>18</b>
3	Mandatory Courses (MC)	3				<b>3</b>
4	Employment Enhancement Courses (EEC)	2	4	10	16	<b>32</b>
5	Audit Courses (AU)					
	<b>Total</b>	<b>19</b>	<b>18</b>	<b>16</b>	<b>16</b>	<b>69</b>

## M.E – Power Electronics and Drives

**Power Electronics and Drives - R 2018**



**Power Electronics and Drives - R 2022**





### R2018 Curriculum Structure- Category Wise Credit Distribution

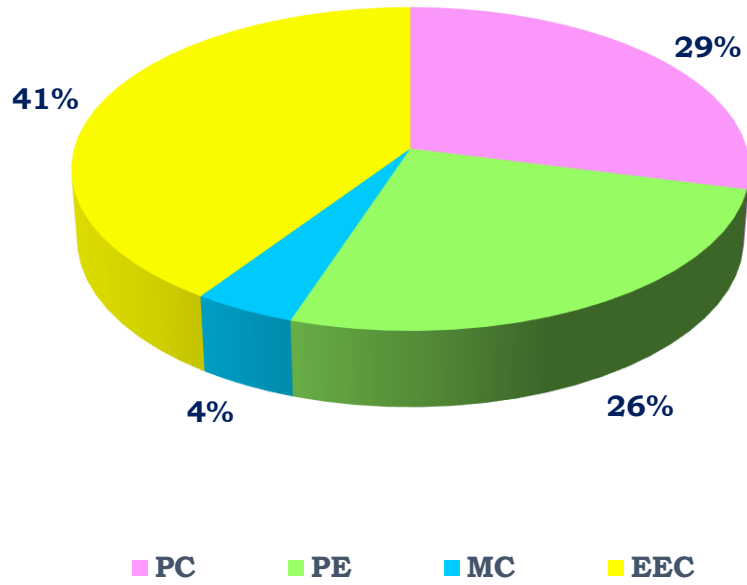
S.No	Category	Credits Per Semester				Total Credits
		I	II	III	IV	
1	Professional Core (PC)	10	10			<b>20</b>
2	Professional Electives (PE)	6	6	6		<b>18</b>
3	Mandatory Courses (MC)	3				<b>3</b>
4	Employment Enhancement Courses (EEC)		2	10	16	<b>28</b>
5	Audit Courses (AU)					
	<b>Total</b>	<b>19</b>	<b>18</b>	<b>16</b>	<b>16</b>	<b>69</b>

### R2022 Curriculum Structure- Category Wise Credit Distribution

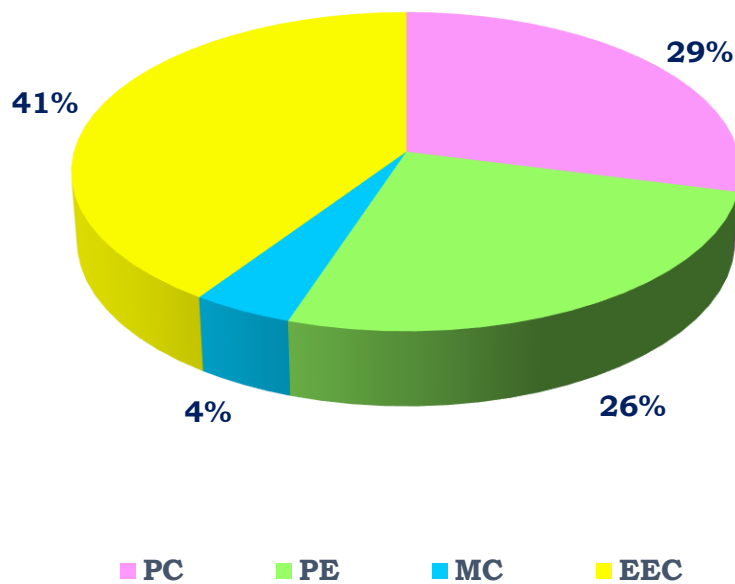
S.No	Category	Credits Per Semester				Total Credits
		I	II	III	IV	
1	Professional Core (PC)	10	10			<b>20</b>
2	Professional Electives (PE)	6	6	6		<b>18</b>
3	Mandatory Courses (MC)	3				<b>3</b>
4	Employment Enhancement Courses (EEC)		2	10	16	<b>28</b>
5	Audit Courses (AU)					
	<b>Total</b>	<b>19</b>	<b>18</b>	<b>16</b>	<b>16</b>	<b>69</b>

## M.E – Welding Technology

### Welding Technology - R 2018



### Welding Technology - R 2022



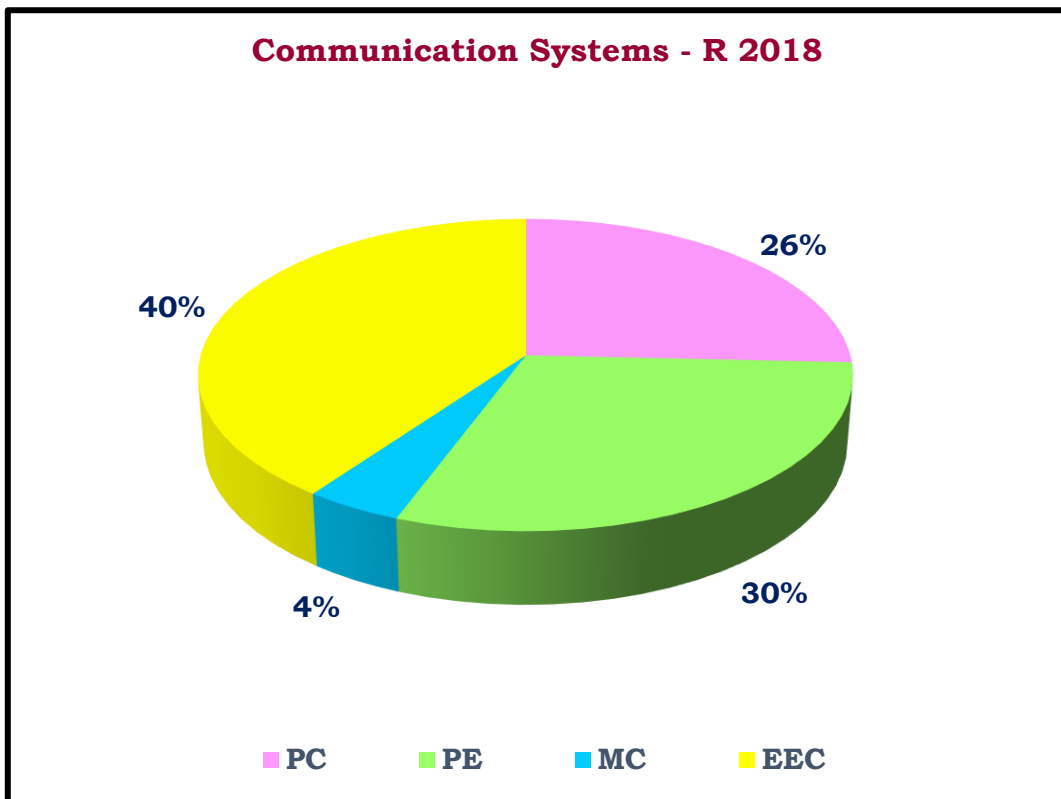
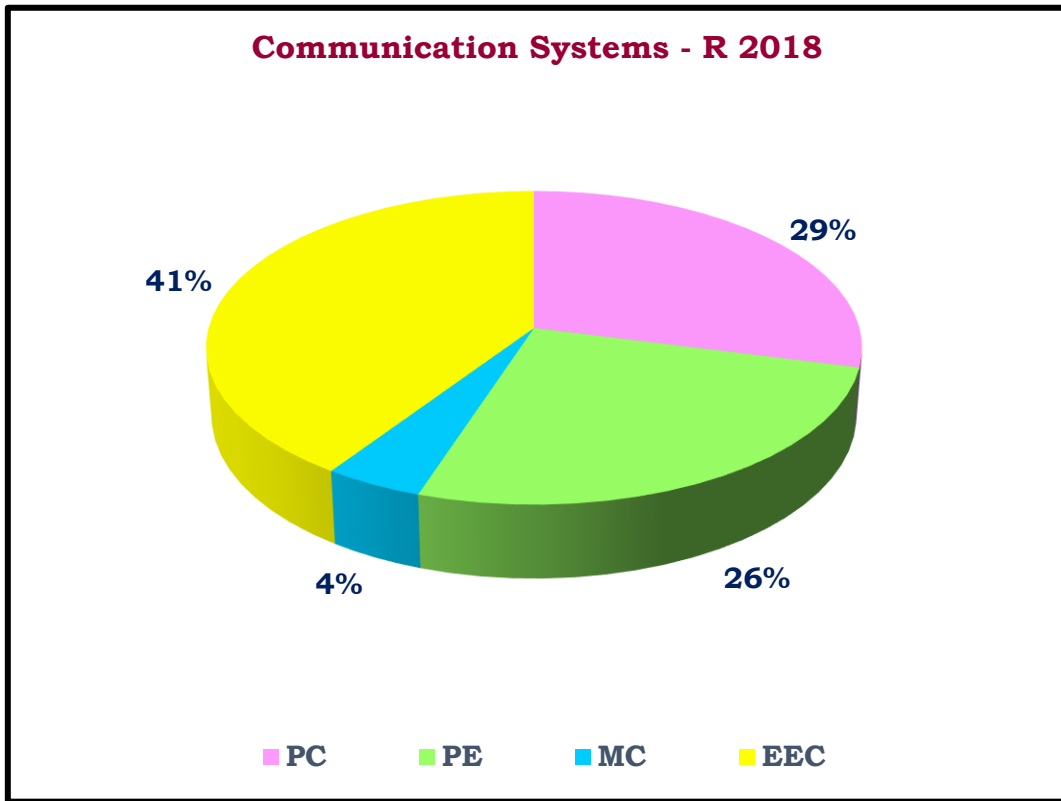
### R2018 Curriculum Structure- Category Wise Credit Distribution

S.No	Category	Credits Per Semester				Total Credits
		I	II	III	IV	
1	Professional Core (PC)	10	10			<b>20</b>
2	Professional Electives (PE)	6	6	6		<b>18</b>
3	Mandatory Courses (MC)	3				<b>3</b>
4	Employment Enhancement Courses (EEC)		2	10	16	<b>28</b>
5	Audit Courses (AU)					
	<b>Total</b>	<b>19</b>	<b>18</b>	<b>16</b>	<b>16</b>	<b>69</b>

### R2022 Curriculum Structure- Category Wise Credit Distribution

S.No	Category	Credits Per Semester				Total Credits
		I	II	III	IV	
1	Professional Core (PC)	10	10			<b>20</b>
2	Professional Electives (PE)	6	6	6		<b>18</b>
3	Mandatory Courses (MC)	3				<b>3</b>
4	Employment Enhancement Courses (EEC)		2	10	16	<b>28</b>
5	Audit Courses (AU)					
	<b>Total</b>	<b>19</b>	<b>18</b>	<b>16</b>	<b>16</b>	<b>69</b>

## M.E – Communication Systems



### R2018 Curriculum Structure- Category Wise Credit Distribution

S.No	Category	Credits Per Semester				Total Credits
		I	II	III	IV	
1	Professional Core (PC)	10	10			<b>20</b>
2	Professional Electives (PE)	6	6	6		<b>18</b>
3	Mandatory Courses (MC)	3				<b>3</b>
4	Employment Enhancement Courses (EEC)		2	10	16	<b>28</b>
5	Audit Courses (AU)					
	<b>Total</b>	<b>19</b>	<b>18</b>	<b>16</b>	<b>16</b>	<b>69</b>

### R2022 Curriculum Structure- Category Wise Credit Distribution

S.No	Category	Credits Per Semester				Total Credits
		I	II	III	IV	
1	Professional Core (PC)	10	8			<b>18</b>
2	Professional Electives (PE)	6	9	6		<b>21</b>
3	Mandatory Courses (MC)	3				<b>3</b>
4	Employment Enhancement Courses (EEC)		2	10	16	<b>28</b>
5	Audit Courses (AU)					
	<b>Total</b>	<b>19</b>	<b>19</b>	<b>16</b>	<b>16</b>	<b>70</b>

  
**PRINCIPAL**  
 GOVT. COLLEGE OF ENGG.,  
 SALEM-636 011