

Government College of Engineering, Salem- 11

(An Autonomous Institution affiliated to Anna University, Chennai)



SELF-STUDY REPORT



CRITERION 7

7.1.3 Describe the facilities in the Institution for the management of the following types of degradable and non-degradable waste.

(Submitted to National Assessment and Accreditation Council)

Self Declaration

This is to certify that the supporting documents for this metric exceed the 5MB upload limit. Therefore, links to sample documents and some samples are provided in the following pages. Any/all Supporting documents will be provided, if required. All links, documents and images are verified and authenticated.



IQAC – Chairperson

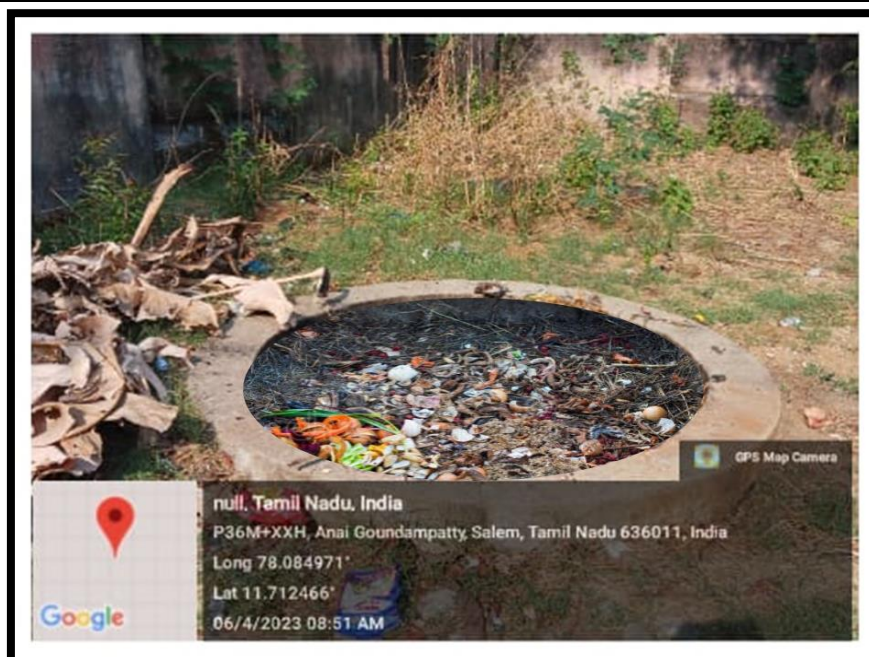
**Internal Quality Assurance Cell
Govt. College of Engineering
Salem - 636 011.**

7.1.3 Describe the facilities in the Institution for the management of the following types of degradable and non-degradable waste.

Solid waste Management - Compost pit



Solid waste Management - Compost pit




Solid waste Management - Compost pit



Solid waste Management – Collecting Hostel Food Waste




PRINCIPAL
GOVT. COLLEGE OF ENGG., 3
SALEM-636 011

Solid waste Management – Collecting Hostel Food Waste



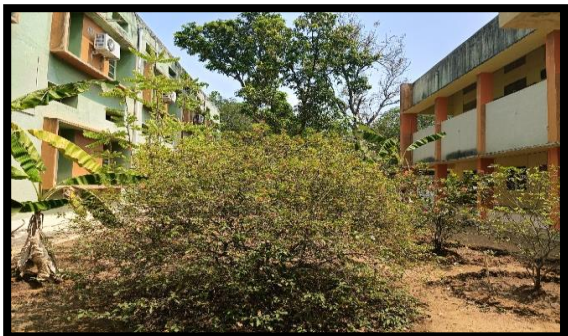
Dustbin at Quarters



Garden at Mechanical Department – Uses manures from Composting Pit



Garden at EEE & CSE – Uses manures from Composting Pit



Garden at ECE Department – Uses manures from Composting Pit



Garden at Civil Department – Uses manures from Composting Pit



Garden at Metallurgical Department – Uses manures from Composting Pit



Sign board to reduce plastic usage



Swachhata Hi Seva -2019, Plastic waste free campaign



One Day Awareness programme on single use plastics



Awareness on Solid Waste Management



Awareness of using cloth bags in place of plastic bags



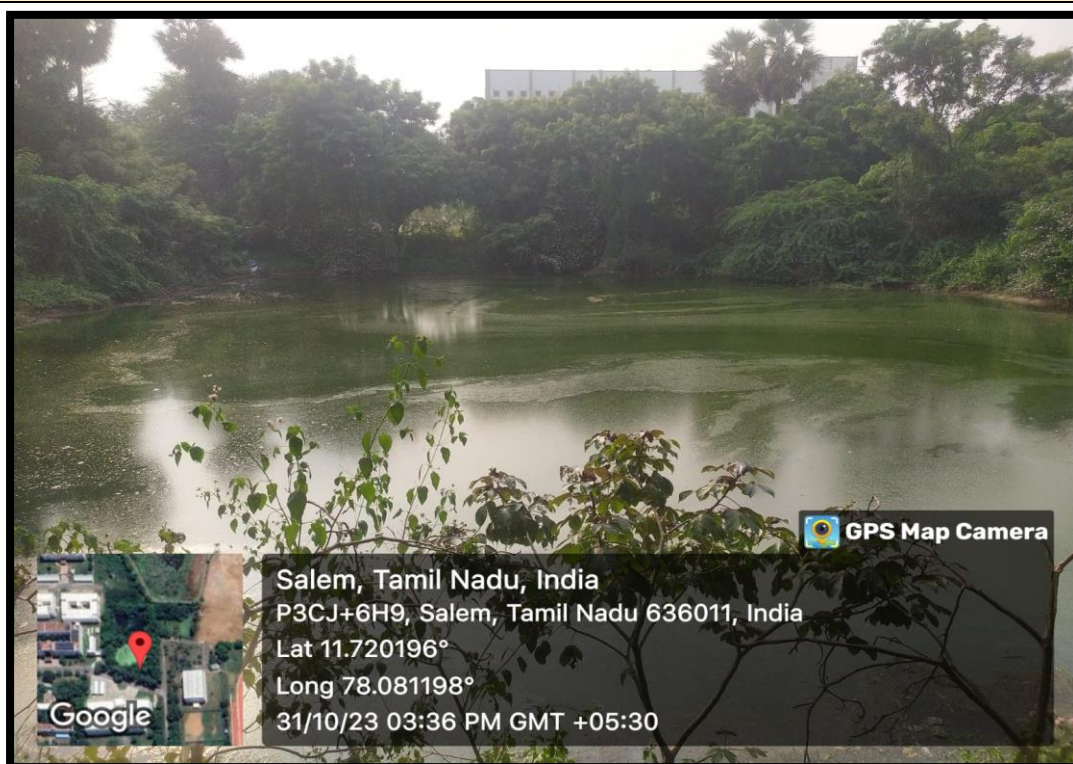
Sign board to reduce plastic usage



Liquid waste management - Oxidation Pond



Liquid waste management - Oxidation Pond



Hazardous chemicals and radioactive waste management



Biomedical Waste Management




PRINCIPAL
GOVT. COLLEGE OF ENGG.,
SALEM-636 011