

Collection of online feedback system from various stakeholders



INTERNAL QUALITY ASSURANCE CELL
GOVERNMENT COLLEGE OF ENGINEERING , SALEM – 11
(An Autonomous Institution Affiliated to Anna University, Chennai)

STAKEHOLDER FEEDBACK POLICY

The Government College of Engineering prioritizes the delivery of high-quality education by actively engaging with various stakeholders. These essential contributors include students, faculty members, parents, alumni, and employers. The college solicits feedback from students on the teaching and learning process (i.e., planning and organisation, presentation and communication, student participation and class management/assessment of studies) is gathered once per semester. Feedback from other stakeholders (i.e., alumni, faculty, parents and employer) regarding the curriculum and infrastructure is sought at the conclusion of each academic year. Subsequently, the collected feedback is subjected to a comprehensive analysis, and appropriate actions are taken. The college maintains transparency by hosting feedback links and action reports on its official website.

FEEDBACK MECHANISM

Regularly soliciting feedback from a diverse range of stakeholders is a key element in enhancing the quality of academic and institutional operations. We elicit feedback from the following categories:

- Students
- Faculty
- Parents
- Alumni
- Employers

These feedback mechanisms are made accessible to all stakeholders. Subsequently, a dedicated committee within the Internal Quality Assurance Cell (IQAC), which comprises the Principal and Heads of Departments (HoDs), meticulously scrutinizes the collected feedback. Based on their analysis, the committee formulates recommendations for corrective actions. Any actions requiring administration's support are then duly conveyed for further consideration and implementation.

FEEDBACK LINKS

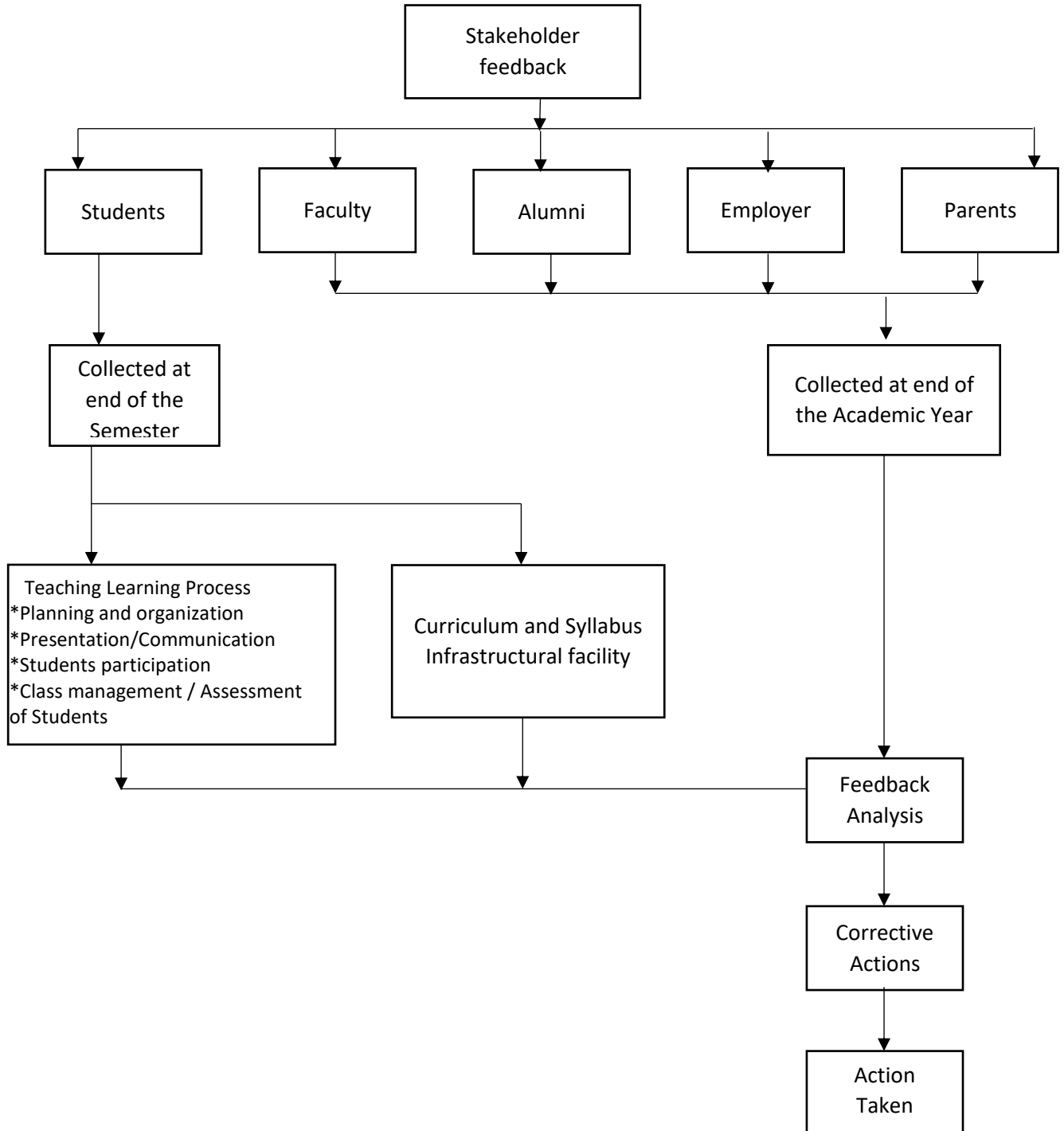
Stakeholder	Links for feedback
Students	https://forms.gle/7HnaHCnj6PfmUW81A
Faculty	https://forms.gle/BbQMXWCj6fiJGYe79
Parents	https://forms.gle/tzn9yMDieLgTynpw6
Alumni	https://forms.gle/gHEJJpxEFRjTP6327
Employers	https://forms.gle/JtjDHY8LcVw6m3hY9



**INTERNAL QUALITY ASSURANCE CELL
GOVERNMENT COLLEGE OF ENGINEERING , SALEM - 11**

(An Autonomous Institution Affiliated to Anna University, Chennai)

STAKEHOLDER FEEDBACK PROCESS




PRINCIPAL
GOVT. COLLEGE OF ENGG.,
SALEM-636 011